

Kenosha County: Pike Creek (Washington Park) RT 966

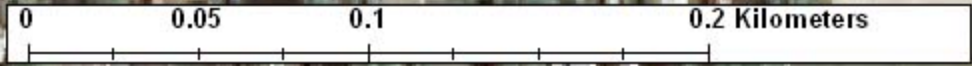
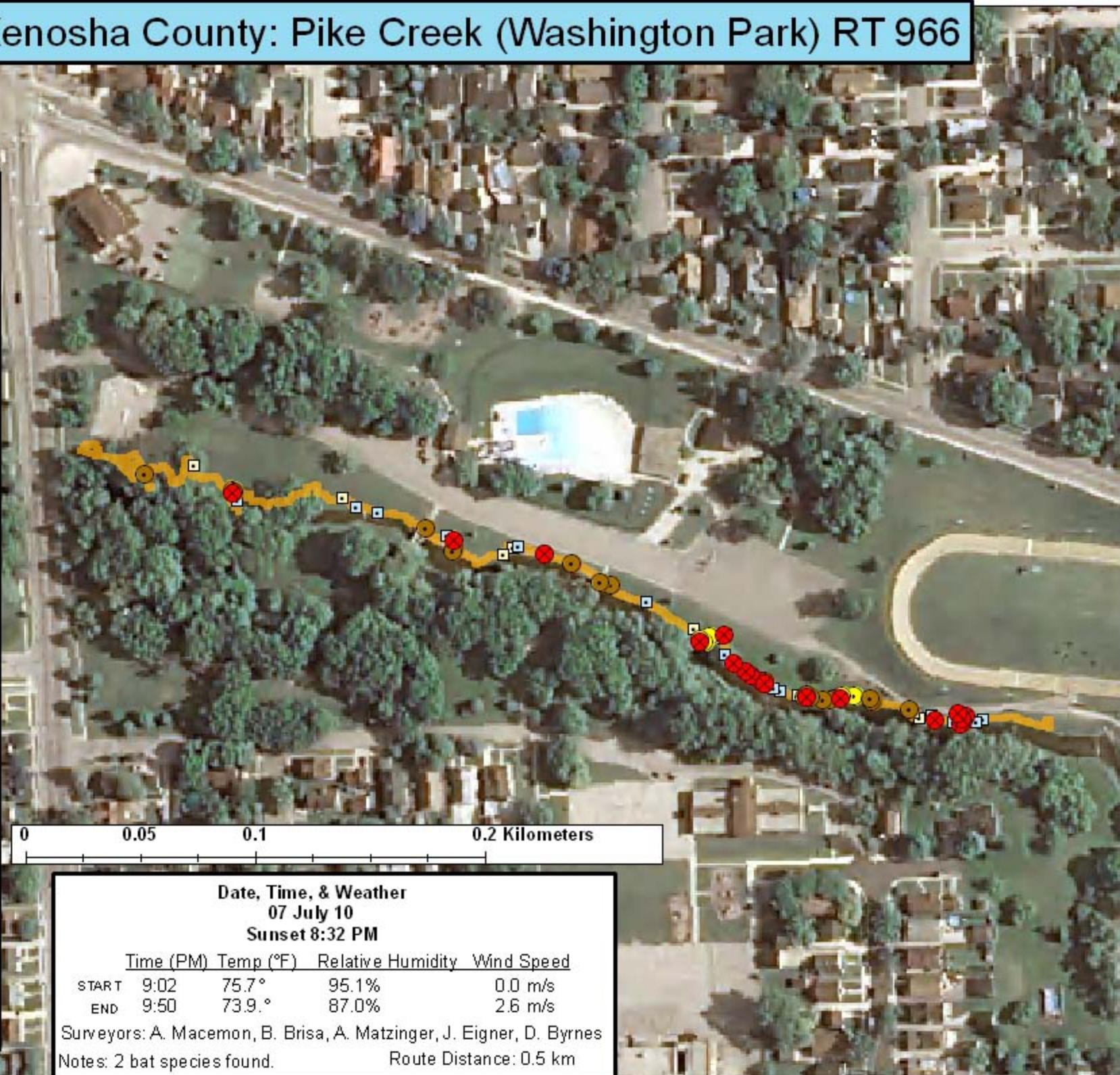
Legend

Survey Route

Bat Encounters

SPECIES/GRP

- HFG ≥ 35
- ⊖ Myotis
- MYLU
- MYSE
- ⊗ LaboPesu
- LABO
- ⊕ PESU
- LFG ≤ 35
- LACI
- EpfuLano
- EPFU
- LANO



Ecological Inventory & Monitoring

Date, Time, & Weather
07 July 10
Sunset 8:32 PM

	Time (PM)	Temp (°F)	Relative Humidity	Wind Speed
START	9:02	75.7°	95.1%	0.0 m/s
END	9:50	73.9°	87.0%	2.6 m/s

Surveyors: A. Macemon, B. Brisa, A. Matzinger, J. Eigner, D. Byrnes
 Notes: 2 bat species found. Route Distance: 0.5 km