

## Acoustic Bat Encounters

Survey Route

### SPECIES/GROUP

High Frequency  $\geq 35$  kHz

Little Brown/  
Northern Long-eared

Little Brown

Northern Long-eared

Eastern Red/ Pipistrelle

Eastern Red

Eastern Pipistrelle

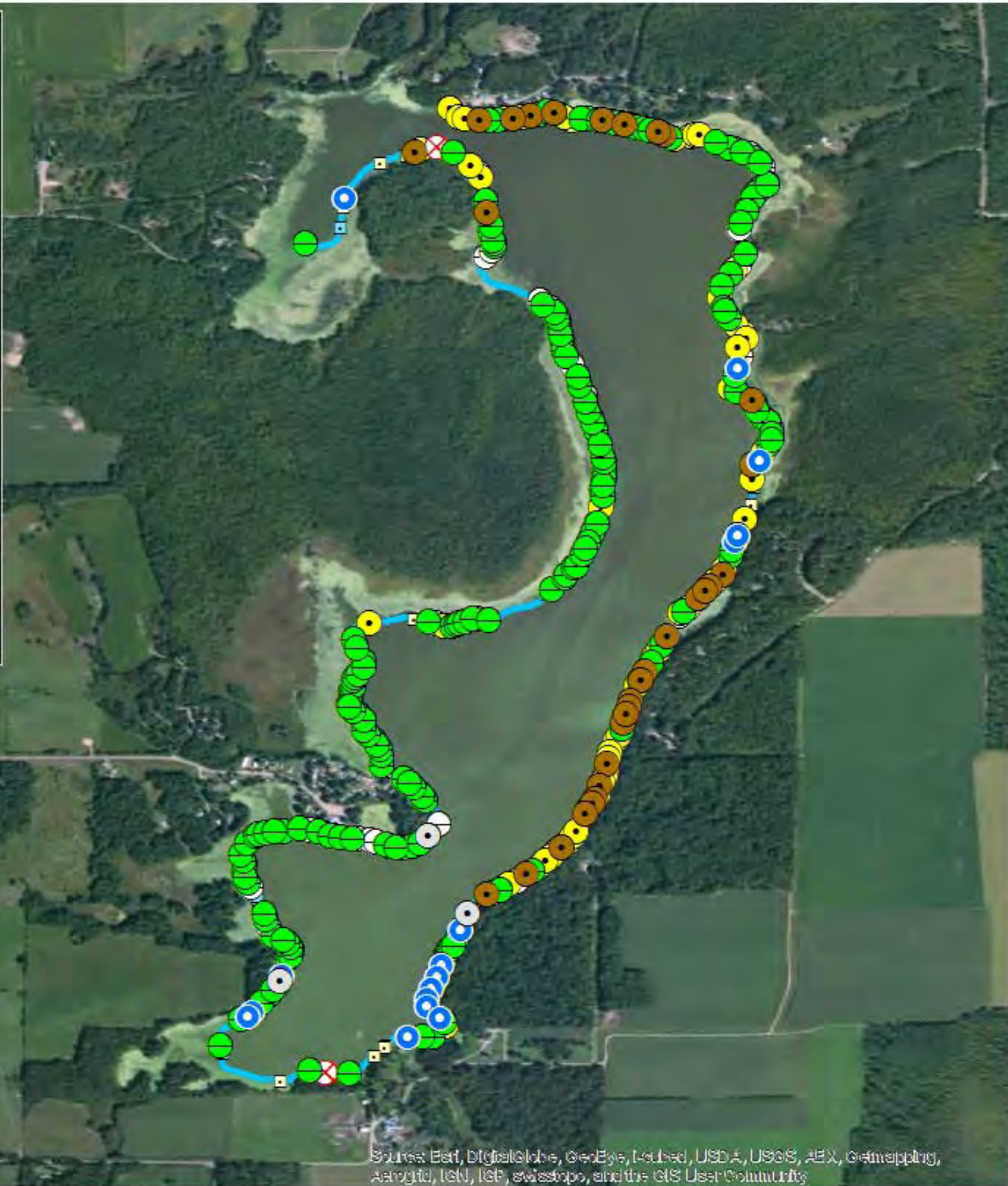
Low Frequency  $\leq 35$  kHz

Hoary

Big Brown/ Silver-haired

Big Brown

Silver-haired



## SURVEY RESULTS

Chippewa County

Marsh-Miller Lake

25 July 2010

RT 980

Surveyors: H Kaarakka & T Brandt

Route Length: 8.49 km

4 Species Encountered

### Time & Weather

Time (PM)

9:37      11:50

Temperature (F)

66.0      63.0

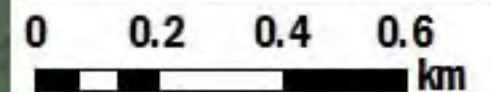
Relative Humidity (%)

84.0      93.0

Wind (m/s)

0.0      0.0

Notes: BATLAS Rt.  
Surveyed Clockwise.



Sources: Esri, DigitalGlobe, GeoEye, Earthstar, USDA, USGS, AeroGRID, IGN, IGP, swisstopo, and the GIS User Community