



SURVEY RESULTS

Douglas County
 St. Croix Flowage
 26 July 2010
 RT 986

Surveyors: S McIntyre & J Klemish

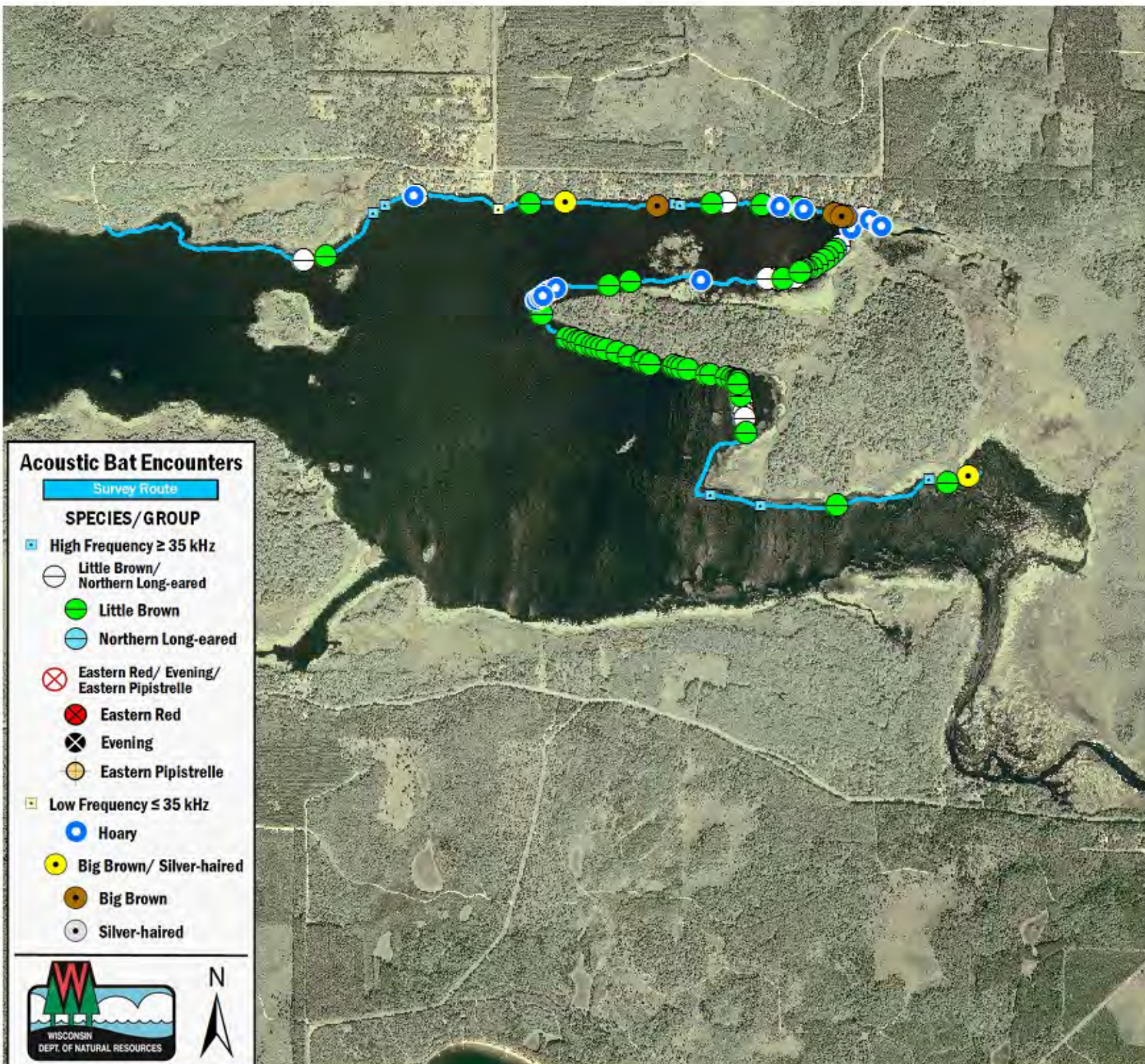
Route Length: 8.11 km
 3 Species Encountered

54.26 Passes/ Detector Hr

Time & Weather

Time (PM)	
9:26	11:42
Temperature (F)	
66.0	70.0
Relative Humidity (%)	
90.0	87.0
Wind (m/s)	
0.0	0.0

Notes: BATLAS Rt.
 Survey completed W to E.



Acoustic Bat Encounters

Survey Route

SPECIES/GROUP

- ▣ High Frequency ≥ 35 kHz
 - Little Brown/
Northern Long-eared
 - Little Brown
 - Northern Long-eared
 - ⊗ Eastern Red/ Evening/
Eastern Pipistrelle
 - Eastern Red
 - ⊗ Evening
 - Eastern Pipistrelle
- ▣ Low Frequency ≤ 35 kHz
 - Hoary
 - Big Brown/ Silver-haired
 - Big Brown
 - Silver-haired

