

Acoustic Bat Encounters

Survey Route

SPECIES/GROUP

- High Frequency ≥ 35 kHz
 - Little Brown/
Northern Long-eared
 - Little Brown
 - Northern Long-eared
 - ⊗ Eastern Red/ Pipistrelle
 - Eastern Red
 - Eastern Pipistrelle
- Low Frequency ≤ 35 kHz
 - Hoary
 - Big Brown/ Silver-haired
 - Big Brown
 - Silver-haired



SURVEY RESULTS

Barron/Washburn County

Red Cedar Lake

27 July 2010

RT 998

Surveyors: T Brandt & H Kaarakka

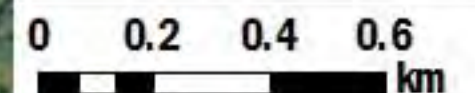
Route Length: 7.87 km

5 Species Encountered

Time & Weather

Time (PM)	
9:50	11:57
Temperature (F)	
69.8	69.8
Relative Humidity (%)	
94.0	94.0
Wind (m/s)	
0.0	0.0

Notes: BATLAS Rt.
Surveyed Clockwise.



Source: Esri, DigitalGlobe, GeoEye, Earthstar, USDA, USGS, AeroX, GeoMapping, AeroGRID, IGN, IGP, swisstopo, and the GIS User Community