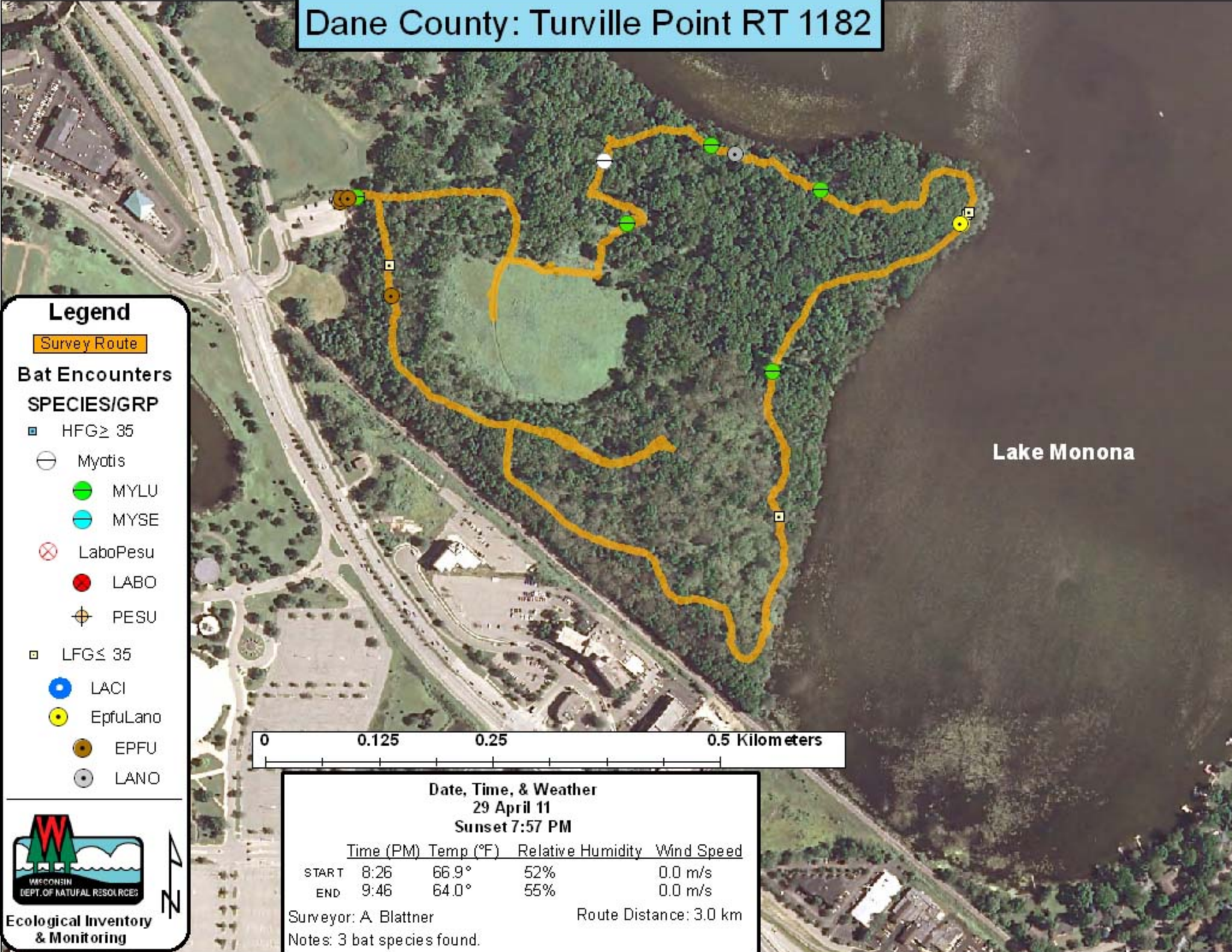


Dane County: Turville Point RT 1182



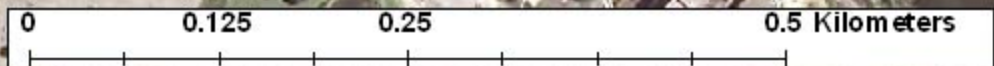
Legend

Survey Route

Bat Encounters

SPECIES/GRP

- HFG ≥ 35
- ⊖ Myotis
- MYLU
- MYSE
- ⊗ LaboPesu
- LABO
- ⊕ PESU
- LFG ≤ 35
- LACI
- EpfuLano
- EPFU
- LANO



Date, Time, & Weather
29 April 11
Sunset 7:57 PM

	Time (PM)	Temp (°F)	Relative Humidity	Wind Speed
START	8:26	66.9°	52%	0.0 m/s
END	9:46	64.0°	55%	0.0 m/s

Surveyor: A. Blattner Route Distance: 3.0 km

Notes: 3 bat species found.

Ecological Inventory & Monitoring