



SURVEY RESULTS

Dane County
Yahara River 1
12 June 2011
RT 1260

Surveyors: H Kaarakka & P White
Route Length: 8.75 km
2 Species Encountered

Time & Weather

Time (PM)

9:18 11:00

Temperature (F)

60.1 61.0

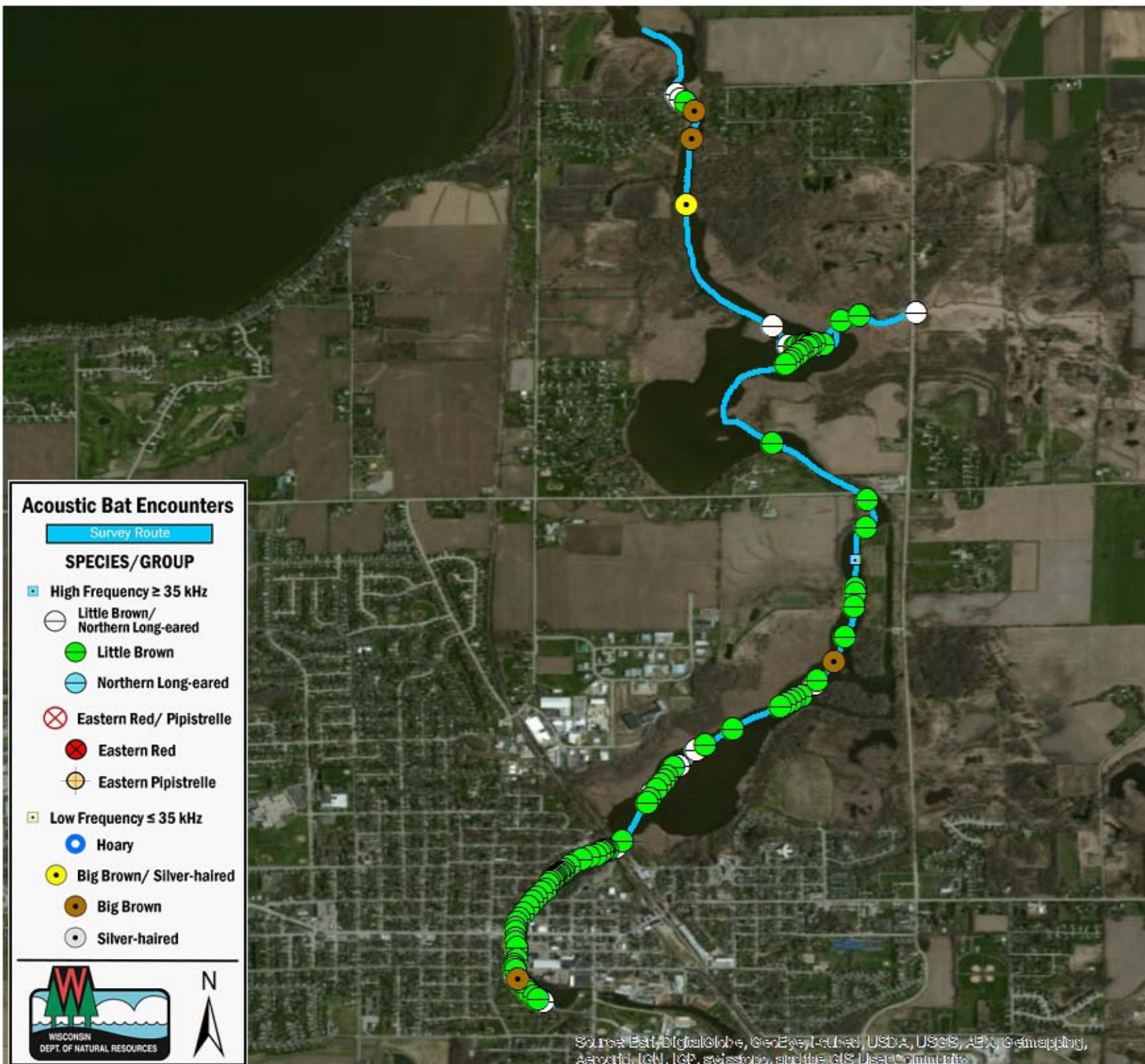
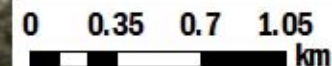
Relative Humidity (%)

64.0 67.0

Wind (m/s)

2.6 1.6

Notes: BATLAS Route
Survey completed North to South



Acoustic Bat Encounters

Survey Route

SPECIES/GROUP

High Frequency ≥ 35 kHz

Little Brown/
Northern Long-eared

Little Brown

Northern Long-eared

Eastern Red/ Pipistrelle

Eastern Red

Eastern Pipistrelle

Low Frequency ≤ 35 kHz

Hoary

Big Brown/ Silver-haired

Big Brown

Silver-haired



Source: Esri, DigitalGlobe, GeoEye, Earthstar, USDA, USGS, AeroGRID, IGN, IGP, swisstopo, and the GIS User Community