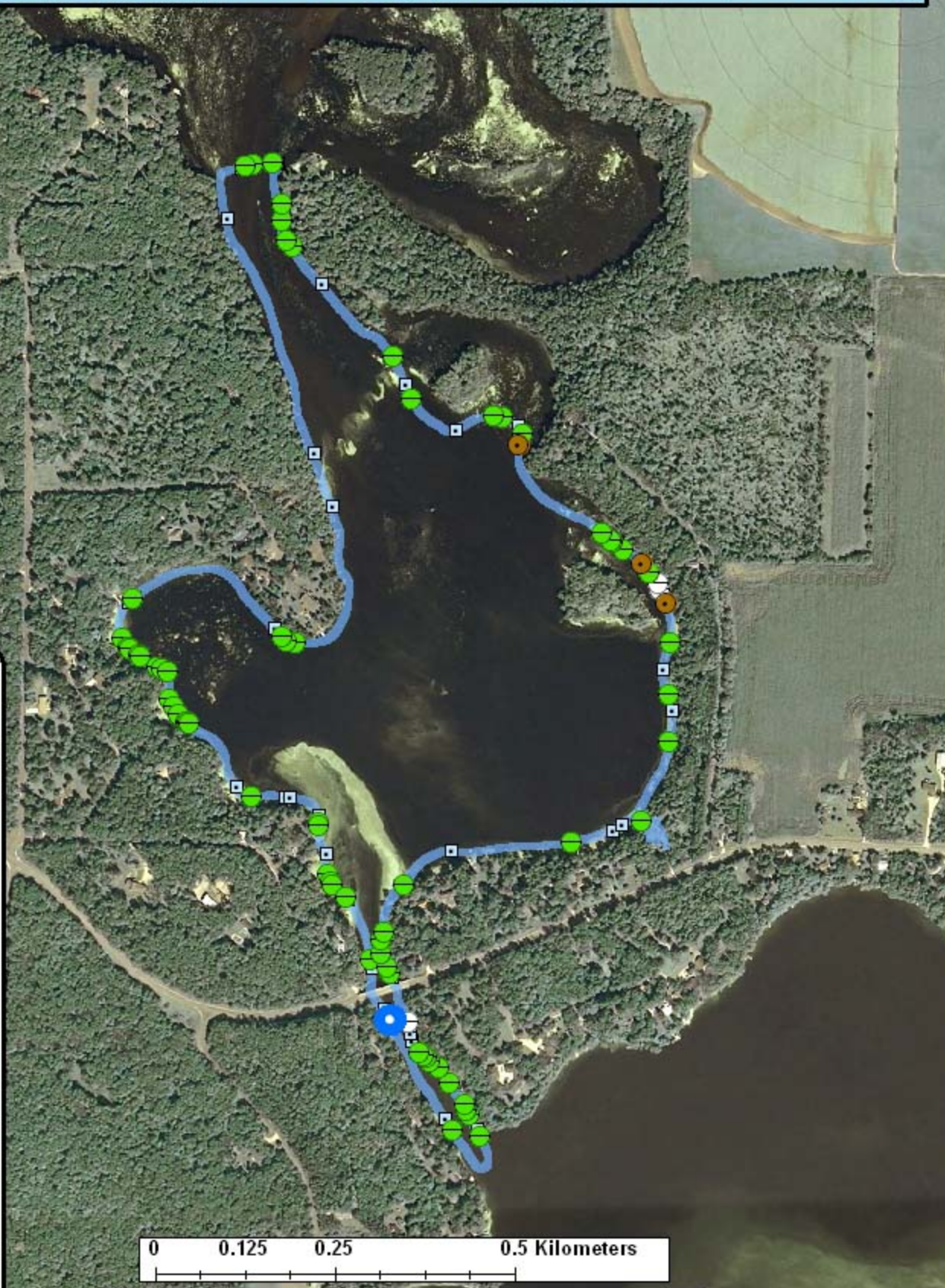


# Dunn County: Tainter Lake - Upper Hay River (RT 1277)



## Legend

Survey Route

### Bat Encounters SPECIES/GRP

□ HFG ≥ 35

⊖ Myotis

● MYLU

● MYSE

⊗ LaboPesu

⊗ LABO

⊕ PESU

□ LFG ≤ 35

● LACI

● EpfuLano

● EPFU

● LANO

0 0.125 0.25 0.5 Kilometers



### Date, Time, & Weather

17 June 11

Sunset 8:56 PM

	Time (PM)	Temp (°F)	Relative Humidity	Wind Speed
START	10:15	73.4°	69%	5.6 m/s
END	11:22	71.6°	73%	8.1 m/s

START	10:15	73.4°	69%	5.6 m/s
END	11:22	71.6°	73%	8.1 m/s

Notes: 3 bat species found

Route Distance: 4.2 km

Surveyors: A. & J. Mares, T. & L. Ludwig



Ecological Inventory  
& Monitoring

