



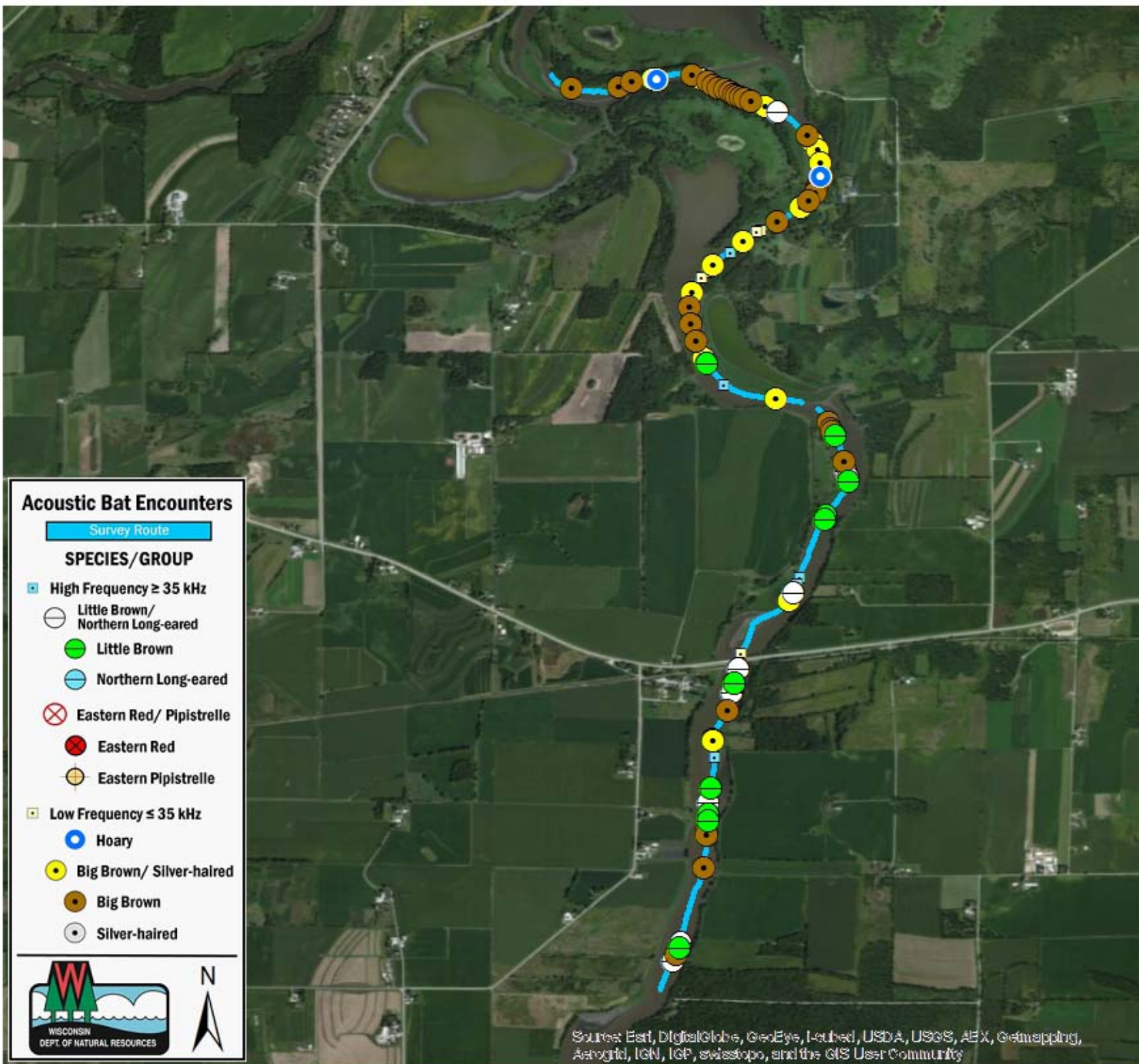
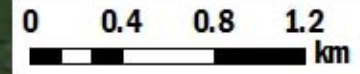
SURVEY RESULTS
 Dodge/ Jefferson County
 Crawfish River 5
 25 June 2011
 RT 1290

Surveyors: T Brandt & H Kaarakka
 Route Length: 7.70 km
 3 Species Encountered

Time & Weather

Time (PM)	
9:14	10:38
Temperature (F)	
66.2	62.6
Relative Humidity (%)	
83.0	82.0
Wind (m/s)	
0.0	0.0

Notes: BATLAS Route
 Survey completed North to South



Acoustic Bat Encounters

- Survey Route
- SPECIES/GROUP**
- High Frequency ≥ 35 kHz
 - Little Brown/ Northern Long-eared
 - Little Brown
 - Northern Long-eared
 - ⊗ Eastern Red/ Pipistrelle
 - Eastern Red
 - Eastern Pipistrelle
 - Low Frequency ≤ 35 kHz
 - Hoary
 - Big Brown/ Silver-haired
 - Big Brown
 - Silver-haired



Source: Esri, DigitalGlobe, GeoEye, Earthstar, USDA, USGS, AeroGRID, IGN, IGP, swisstopo, and the GIS User Community