



SURVEY RESULTS

Columbia/Dodge County

Crawfish River 2

28 June 2011

RT 1302

Surveyors: H Kaarakka & T Brandt

Route Length: 8.11 km

4 Species Encountered

Time & Weather

Time (PM)

9:19 11:02

Temperature (F)

68.0 62.6

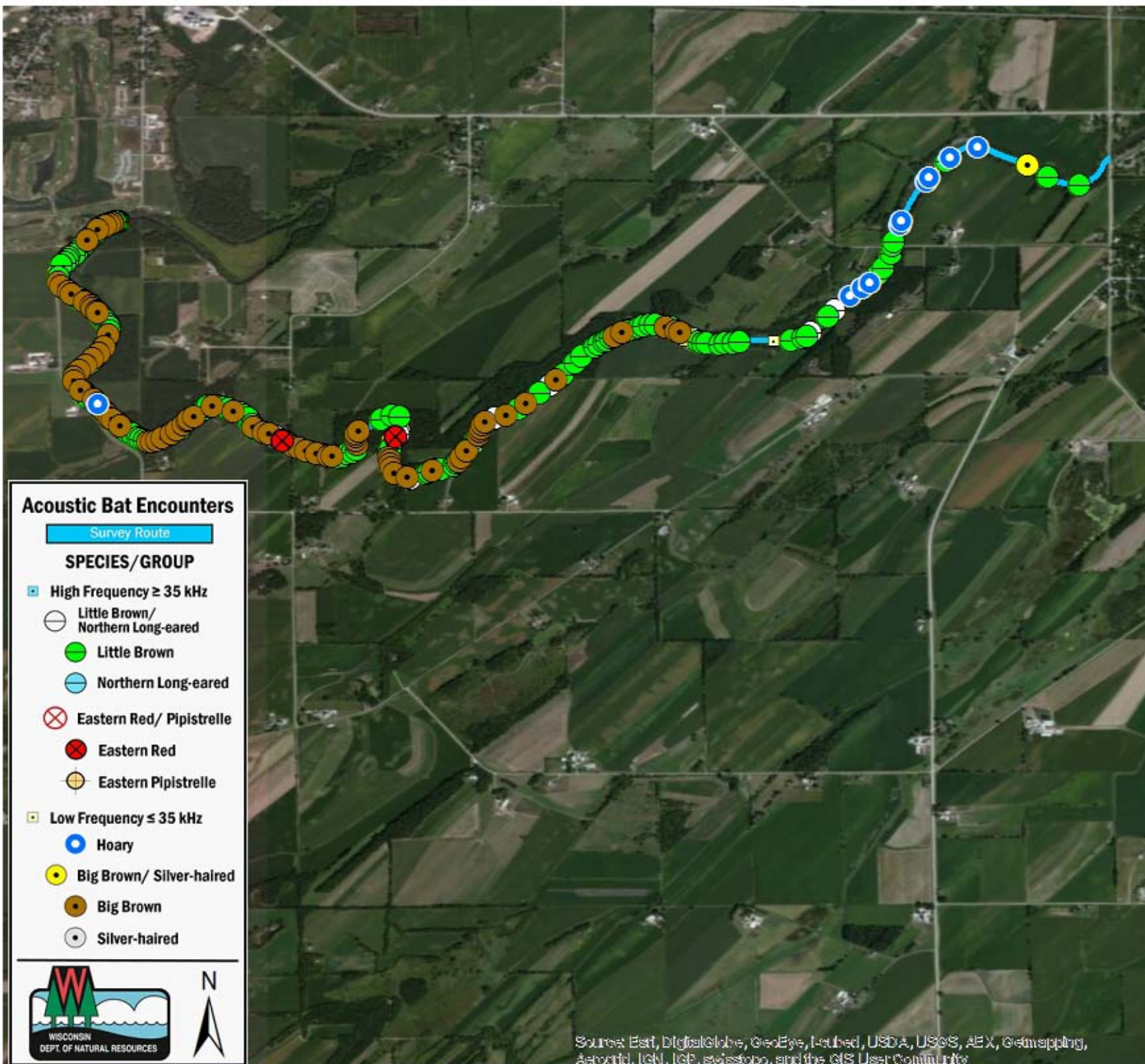
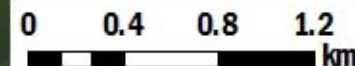
Relative Humidity (%)

49.0 63.0

Wind (m/s)

0.0 0.0

Notes: BATLAS Route
Survey completed West to East



Acoustic Bat Encounters

Survey Route

SPECIES/GROUP

High Frequency ≥ 35 kHz

○ Little Brown/
Northern Long-eared

● Little Brown

● Northern Long-eared

⊗ Eastern Red/ Pipistrelle

⊗ Eastern Red

⊗ Eastern Pipistrelle

Low Frequency ≤ 35 kHz

● Hoary

● Big Brown/ Silver-haired

● Big Brown

○ Silver-haired



Source: Esri, DigitalGlobe, GeoEye, Earthstar, USDA, USGS, AeroGRID, IGN, IGP, swisstopo, and the GIS User Community