



SURVEY RESULTS

Columbia County
Wisconsin River 16

6 July 2011

RT 1324

Surveyors: P White
Route Length: 8.12 km
4 Species Encountered

Time & Weather

Time (PM)

9:15 10:24

Temperature (F)

69.8 68.0

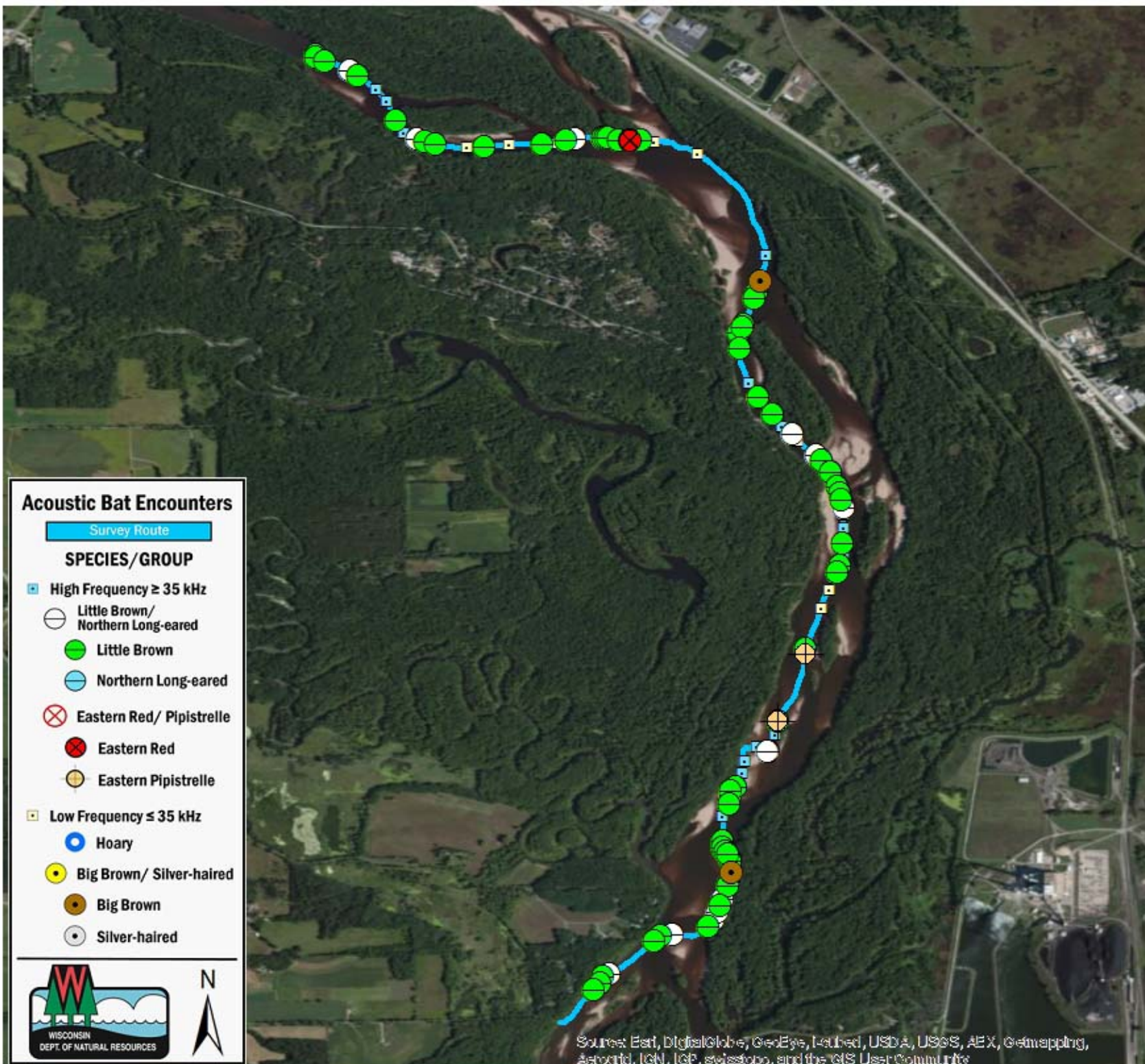
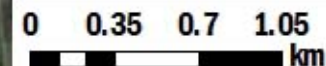
Relative Humidity (%)

60.0 56.0

Wind (m/s)

3.6 2.6

Notes: BATLAS Route
Survey completed North to South



Acoustic Bat Encounters

Survey Route

SPECIES/GROUP

- High Frequency ≥ 35 kHz
 - Little Brown/
Northern Long-eared
 - Little Brown
 - Northern Long-eared
 - ⊗ Eastern Red/ Pipistrelle
 - Eastern Red
 - Eastern Pipistrelle
- Low Frequency ≤ 35 kHz
 - Hoary
 - Big Brown/ Silver-haired
 - Big Brown
 - Silver-haired



Source: Esri, DigitalGlobe, GeoEye, Earthstar, USDA, USGS, AEX, Geomatics, AeroGRID, IGN, IGP, swisstopo, and the GIS User Community