



SURVEY RESULTS

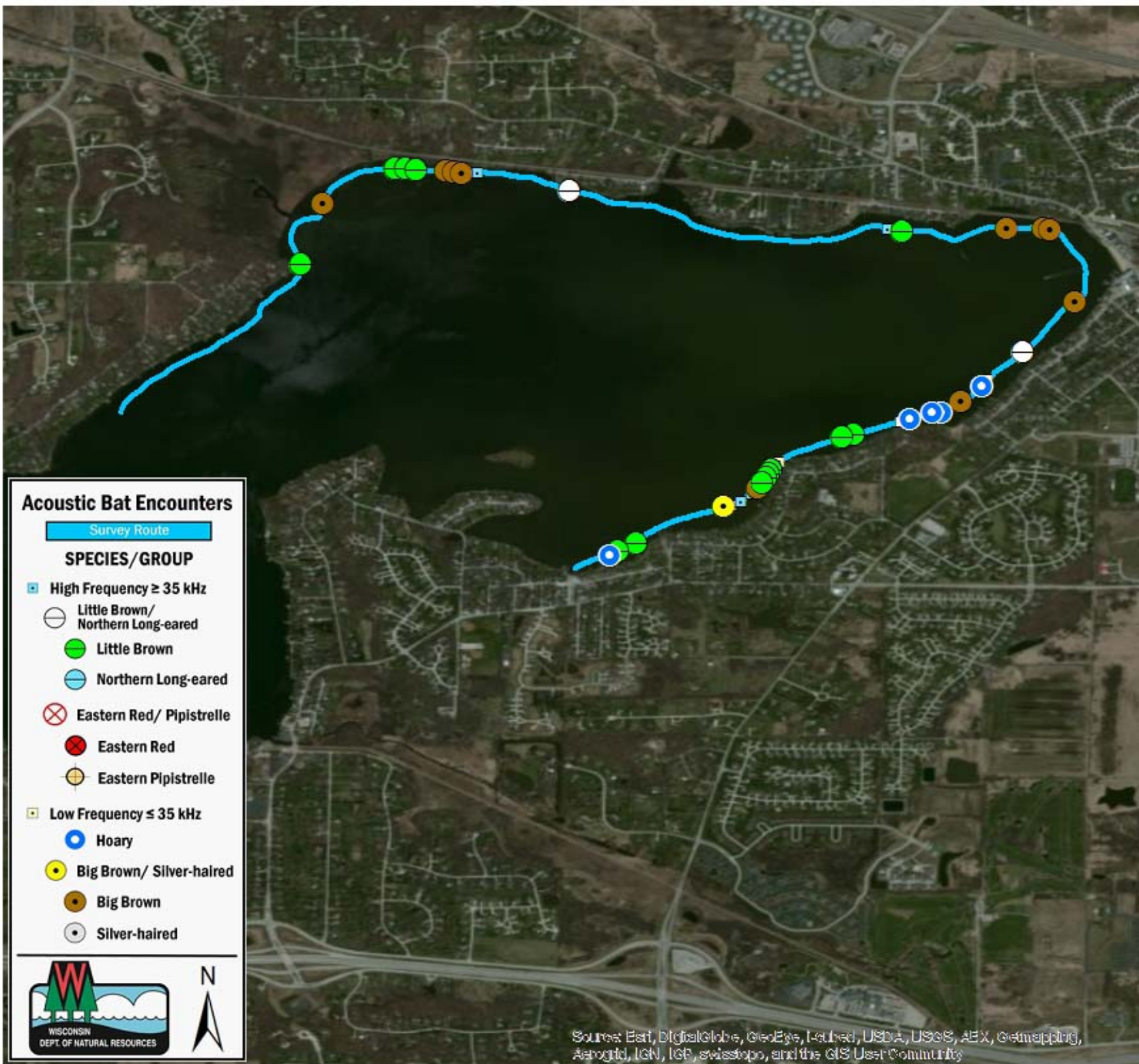
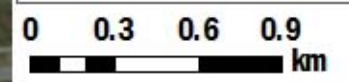
Waukesha County
Pewaukee Lake
10 July 2011
RT 1336

Surveyors: P White & H Kaarakka
Route Length: 7.38 km
3 Species Encountered

Time & Weather

Time (PM)	
9:06	10:17
Temperature (F)	
77.0	77.0
Relative Humidity (%)	
65.0	65.0
Wind (m/s)	
0.0	2.1

Notes: BATLAS Route
Survey completed clockwise



Acoustic Bat Encounters

- Survey Route**
- SPECIES/GROUP**
- ▣ High Frequency ≥ 35 kHz
 - Little Brown/Northern Long-eared
 - Little Brown
 - Northern Long-eared
 - ⊗ Eastern Red/ Pipistrelle
 - Eastern Red
 - Eastern Pipistrelle
 - ▣ Low Frequency ≤ 35 kHz
 - Hoary
 - Big Brown/ Silver-haired
 - Big Brown
 - Silver-haired



Source: Esri, DigitalGlobe, GeoEye, Earthstar, USDA, USGS, AeroGRID, IGN, IGP, swisstopo, and the GIS User Community