



SURVEY RESULTS

Columbia/Marquette County

Neenah Creek 1

17 July 2011

RT 1358

Surveyors: P White & A Badje

Route Length: 9.27 km

4 Species Encountered

Time & Weather

Time (PM)

9:08 10:48

Temperature (F)

82.4 82.4

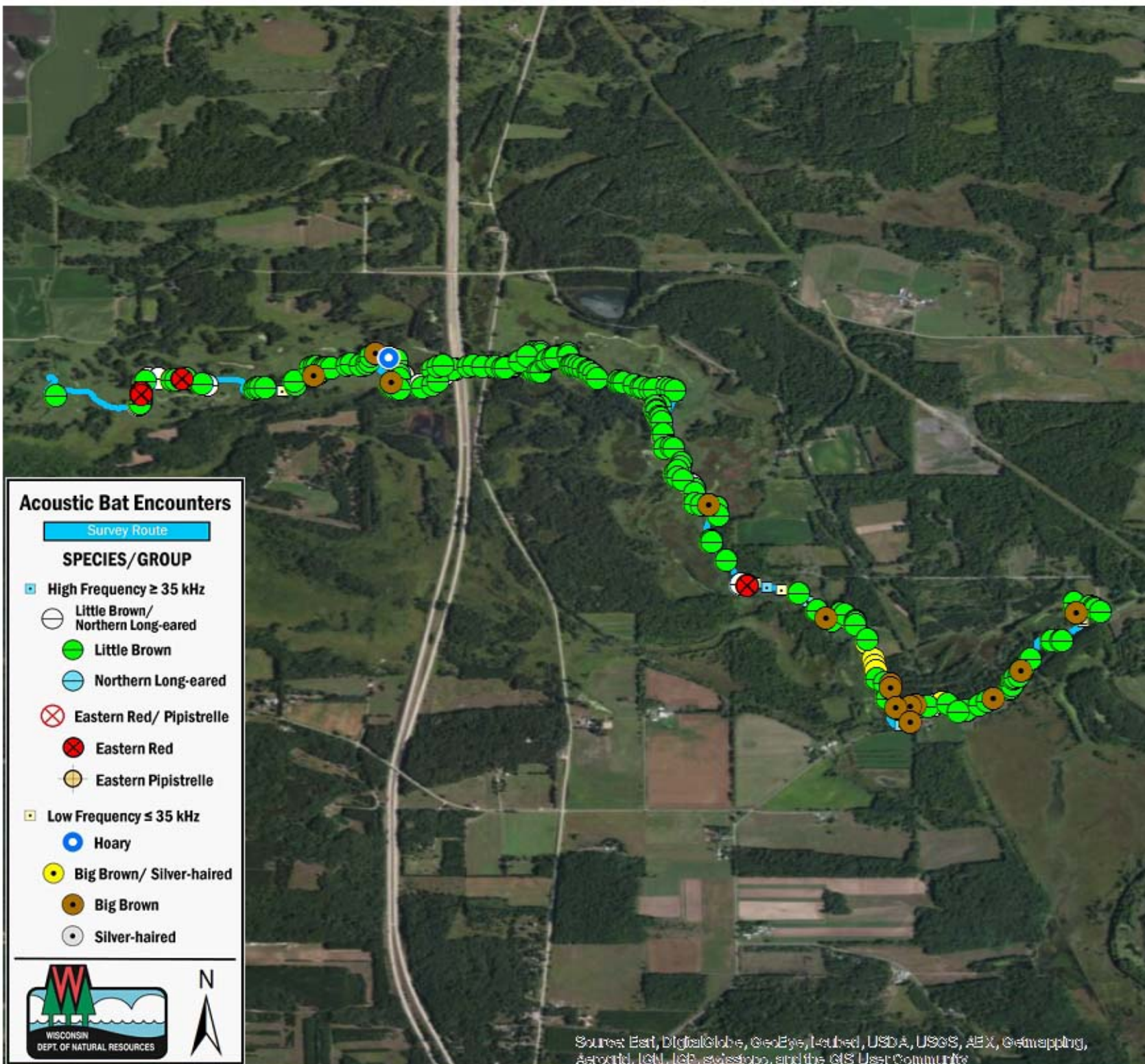
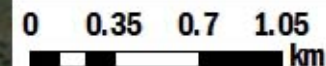
Relative Humidity (%)

79.0 74.0

Wind (m/s)

2.6 2.1

Notes: BATLAS Route
Survey completed West to East



Acoustic Bat Encounters

Survey Route

SPECIES/GROUP

- ▣ High Frequency ≥ 35 kHz
 - Little Brown/Northern Long-eared
 - Little Brown
 - Northern Long-eared
 - ⊗ Eastern Red/ Pipistrelle
 - ⊗ Eastern Red
 - Eastern Pipistrelle
- ▣ Low Frequency ≤ 35 kHz
 - Hoary
 - Big Brown/ Silver-haired
 - Big Brown
 - Silver-haired



Source: Esri, DigitalGlobe, GeoEye, Earthstar, USDA, USGS, AeroGRID, IGN, ICG, swisstopo, and the GIS User Community