



SURVEY RESULTS

Dodge County
 East Branch Rock River 1
 18 July 2011
 RT 1363
 Surveyors: T Brandt & P White
 Route Length: 7.25 km
 4 Species Encountered

Time & Weather

Time (PM)

9:05 11:24

Temperature (F)

77.0 73.4

Relative Humidity (%)

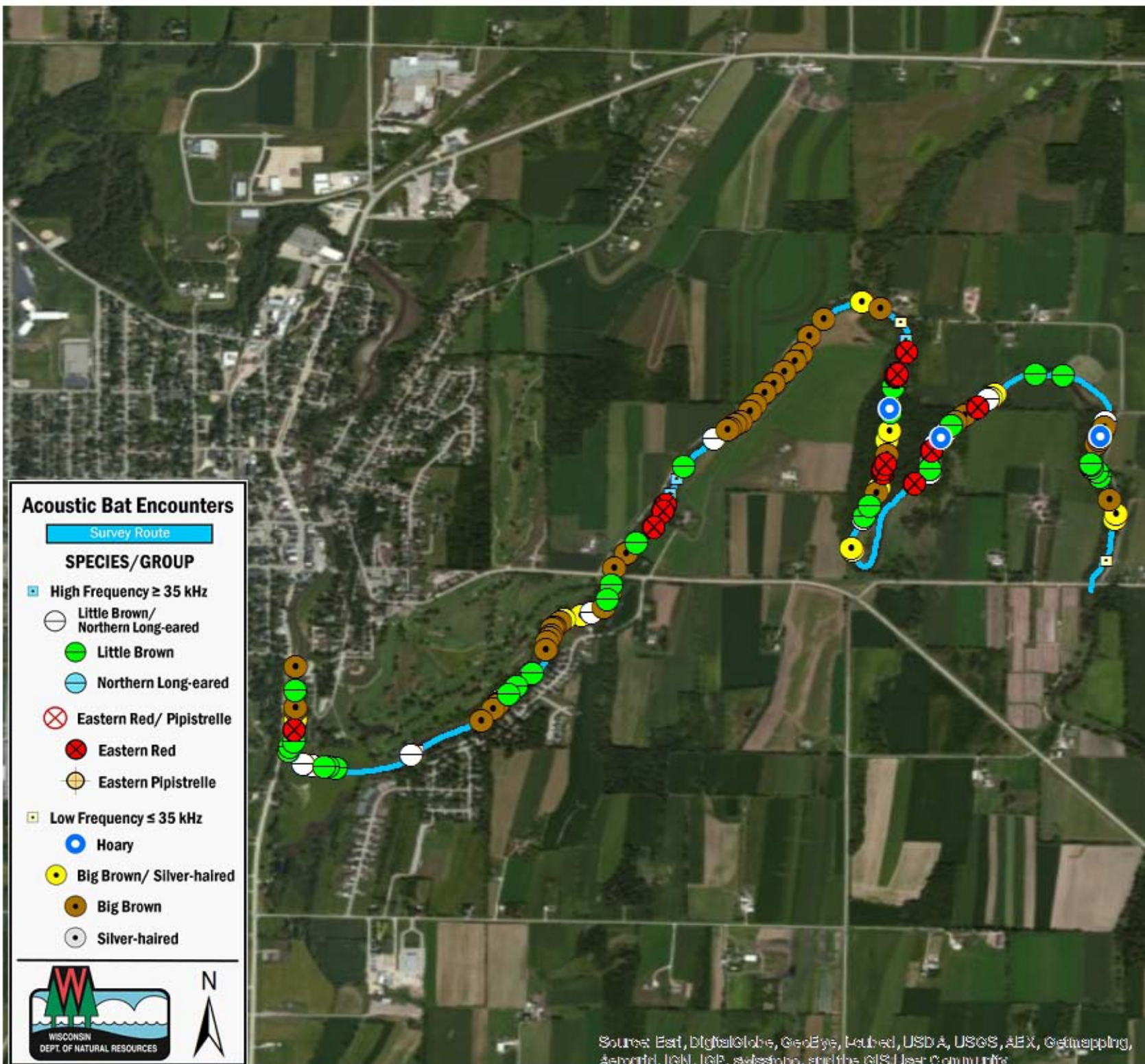
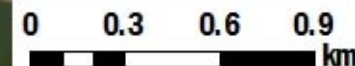
74.0 83.0

Wind (m/s)

0.0 2.1

Notes: BATLAS Route

Survey completed East to West
 Route shortened due to low water



Acoustic Bat Encounters

Survey Route

SPECIES/GROUP

- High Frequency ≥ 35 kHz
 - Little Brown/Northern Long-eared
 - Little Brown
 - Northern Long-eared
 - ⊗ Eastern Red/ Pipistrelle
 - Eastern Red
 - Eastern Pipistrelle
- Low Frequency ≤ 35 kHz
 - Hoary
 - Big Brown/ Silver-haired
 - Big Brown
 - Silver-haired



Sources: Esri, DigitalGlobe, GeoEye, Earthstar, USDA, USGS, AEX, Getmapping, Aerogrid, IGN, IGP, swisstopo, and the GIS User Community