



SURVEY RESULTS

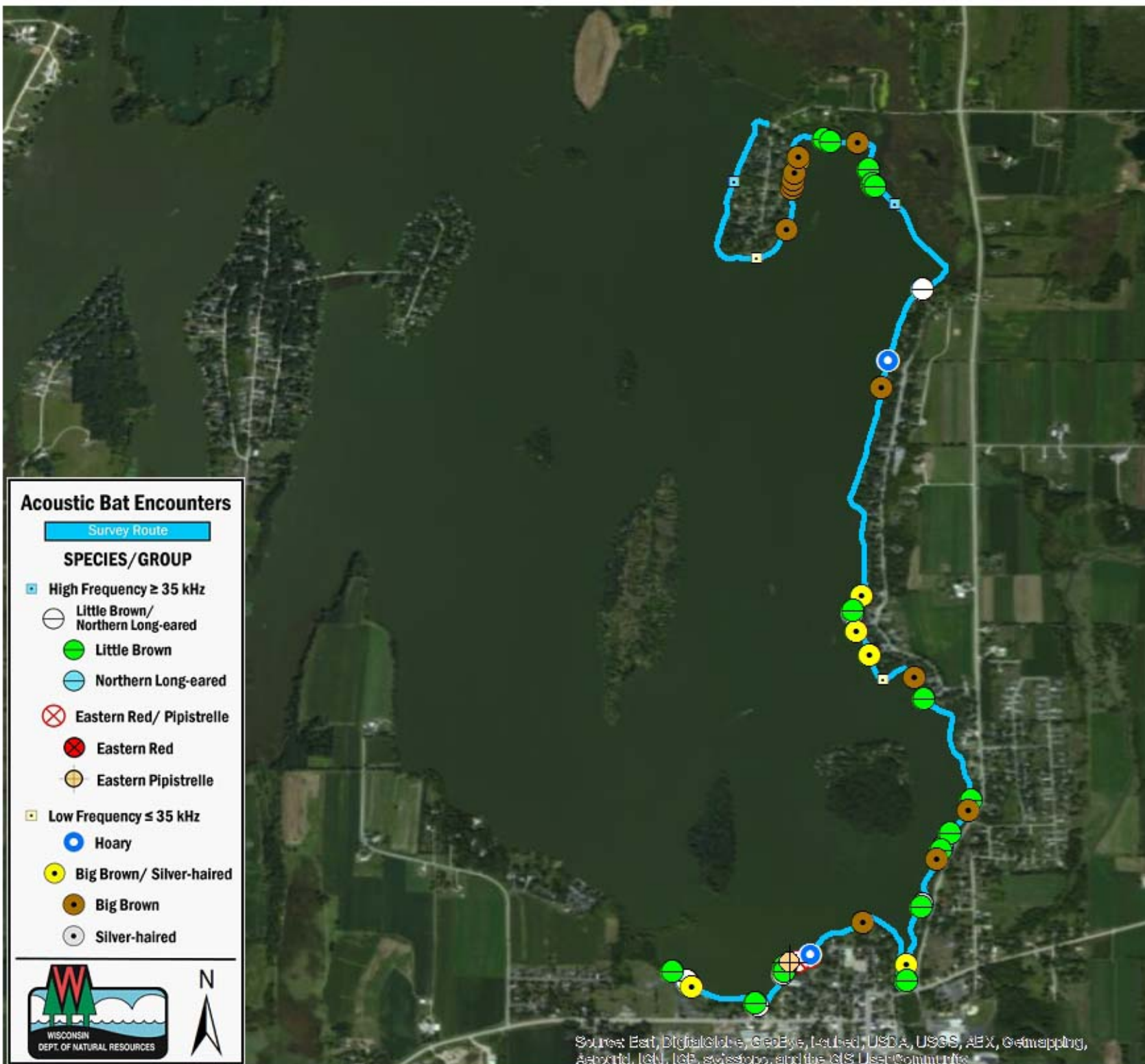
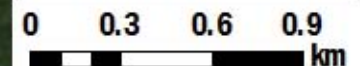
Dodge County
 Sinissippi Lake
 14 July 2011
 RT 1364

Surveyors: A Badje & A Blattner
 Route Length: 7.78 km
 4 Species Encountered

Time & Weather

Time (PM)	
9:08	10:23
Temperature (F)	
68.0	66.2
Relative Humidity (%)	
52.0	56.0
Wind (m/s)	
3.1	3.6

Notes: BATLAS Route
 Survey completed North to South



Acoustic Bat Encounters

Survey Route

SPECIES/GROUP

- High Frequency ≥ 35 kHz
 - Little Brown/
Northern Long-eared
 - Little Brown
 - Northern Long-eared
 - ⊗ Eastern Red/ Pipistrelle
 - Eastern Red
 - Eastern Pipistrelle
- Low Frequency ≤ 35 kHz
 - Hoary
 - Big Brown/ Silver-haired
 - Big Brown
 - Silver-haired



Source: Esri, DigitalGlobe, GeoEye, Earthstar, USDA, USGS, AEX, Getmapping, Aerogrid, IGN, IGP, swisstopo, and the GIS User Community