



## SURVEY RESULTS

Marquette County

Lawrence Lake

21 July 2011

RT 1375

Surveyors: P White & A Rossler

Route Length: 6.30 km

4 Species Encountered

### Time & Weather

Time (PM)

9:07      10:15

Temperature (F)

71.6      69.8

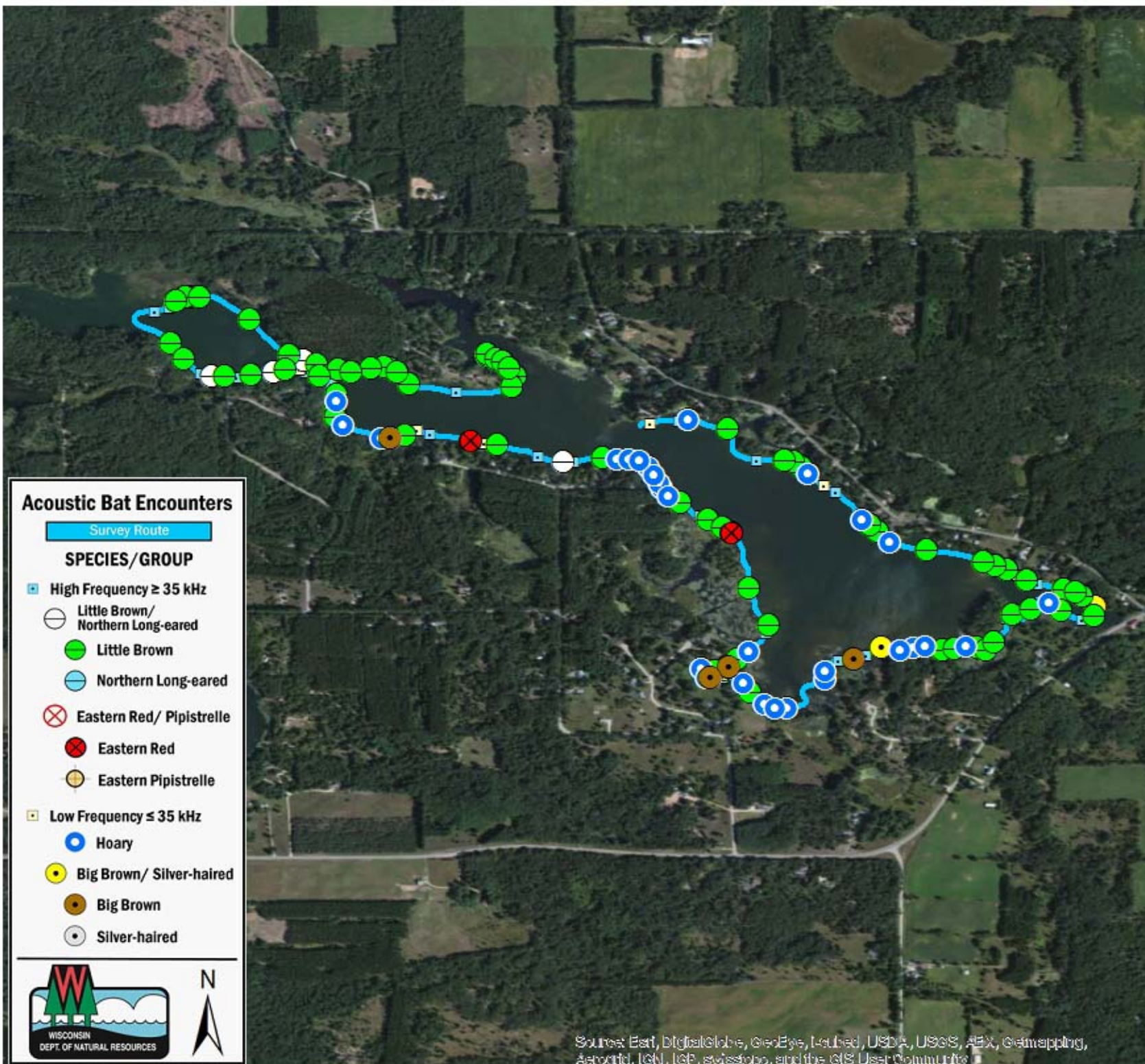
Relative Humidity (%)

78.0      83.0

Wind (m/s)

0.0      0.0

Notes: BATLAS Route  
Survey completed  
counter-clockwise



### Acoustic Bat Encounters

Survey Route

#### SPECIES/GROUP

- High Frequency  $\geq 35$  kHz
  - Little Brown/  
Northern Long-eared
  - Little Brown
  - Northern Long-eared
  - ⊗ Eastern Red/ Pipistrelle
  - ⊗ Eastern Red
  - Eastern Pipistrelle
- Low Frequency  $\leq 35$  kHz
  - Hoary
  - Big Brown/ Silver-haired
  - Big Brown
  - Silver-haired



Source: Esri, DigitalGlobe, GeoEye, Earthstar, USDA, USGS, AeroGRID, IGN, IGP, swisstopo, and the GIS User Community

