

# Langlade County: Upper Wolf River Fishery Area 2 (RT 1384)

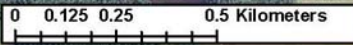
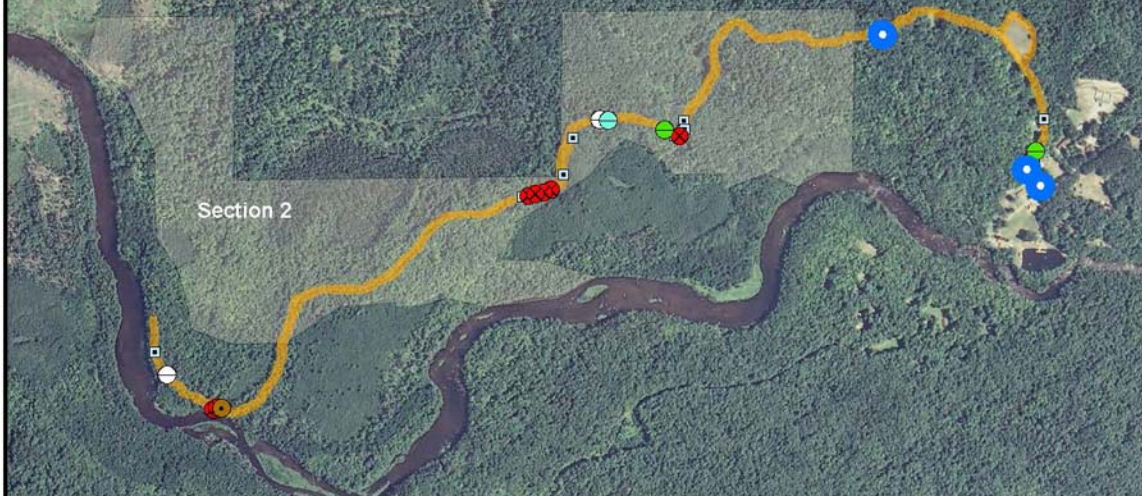
## Legend

**Survey Route**

### Bat Encounters

#### SPECIES/GRP

- ▣ HFG ≥ 35
- Myotis
- MYLU
- MYSE
- ⊗ LaboPesu
- ⊗ LABO
- ⊕ PESU
- ▣ LFG ≤ 35
- LACI
- EpfuLano
- EPFU
- LANO



Ecological Inventory  
& Monitoring

### Date, Time, & Weather

26 July 11

Sunset 8:32 PM

	Time (PM)	Temp (°F)	Relative Humidity	Wind Speed
START	9:08	62.6°	82%	0.0 m/s
END	10:43	60.8°	82%	0.0 m/s

Surveyors: G. Emerson, H. Kaarakka      Route Distance: 6.6 km

Notes: 5 bat species encountered