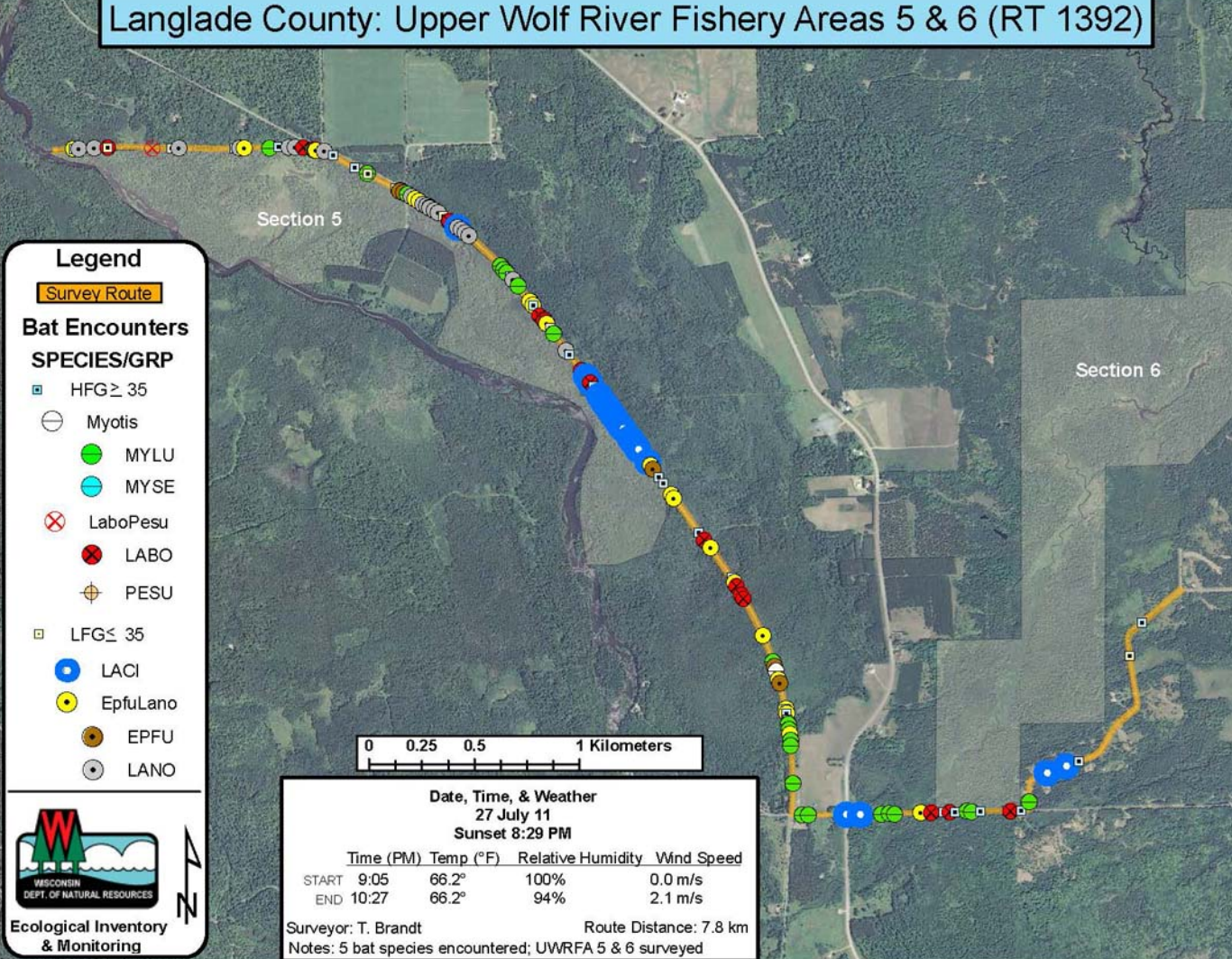


# Langlade County: Upper Wolf River Fishery Areas 5 & 6 (RT 1392)



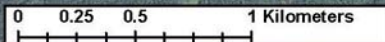
## Legend

Survey Route

### Bat Encounters

#### SPECIES/GRP

- HFG ≥ 35
- Myotis
- MYLU
- MYSE
- ⊗ LaboPesu
- ⊗ LABO
- ⊕ PESU
- LFG ≤ 35
- LACI
- EpfuLano
- EPFU
- LANO



#### Date, Time, & Weather

27 July 11

Sunset 8:29 PM

	Time (PM)	Temp (°F)	Relative Humidity	Wind Speed
START	9:05	66.2°	100%	0.0 m/s
END	10:27	66.2°	94%	2.1 m/s

Surveyor: T. Brandt

Route Distance: 7.8 km

Notes: 5 bat species encountered; UWRFA 5 & 6 surveyed



Ecological Inventory  
& Monitoring