



SURVEY RESULTS

Columbia County
French Creek Wildlife Area

Pond #2

25 July 2011

RT 1395

Surveyors: A Badje

Route Length: 4.98 km

3 Species Encountered

Time & Weather

Time (PM)

9:00 10:32

Temperature (F)

73.4 69.8

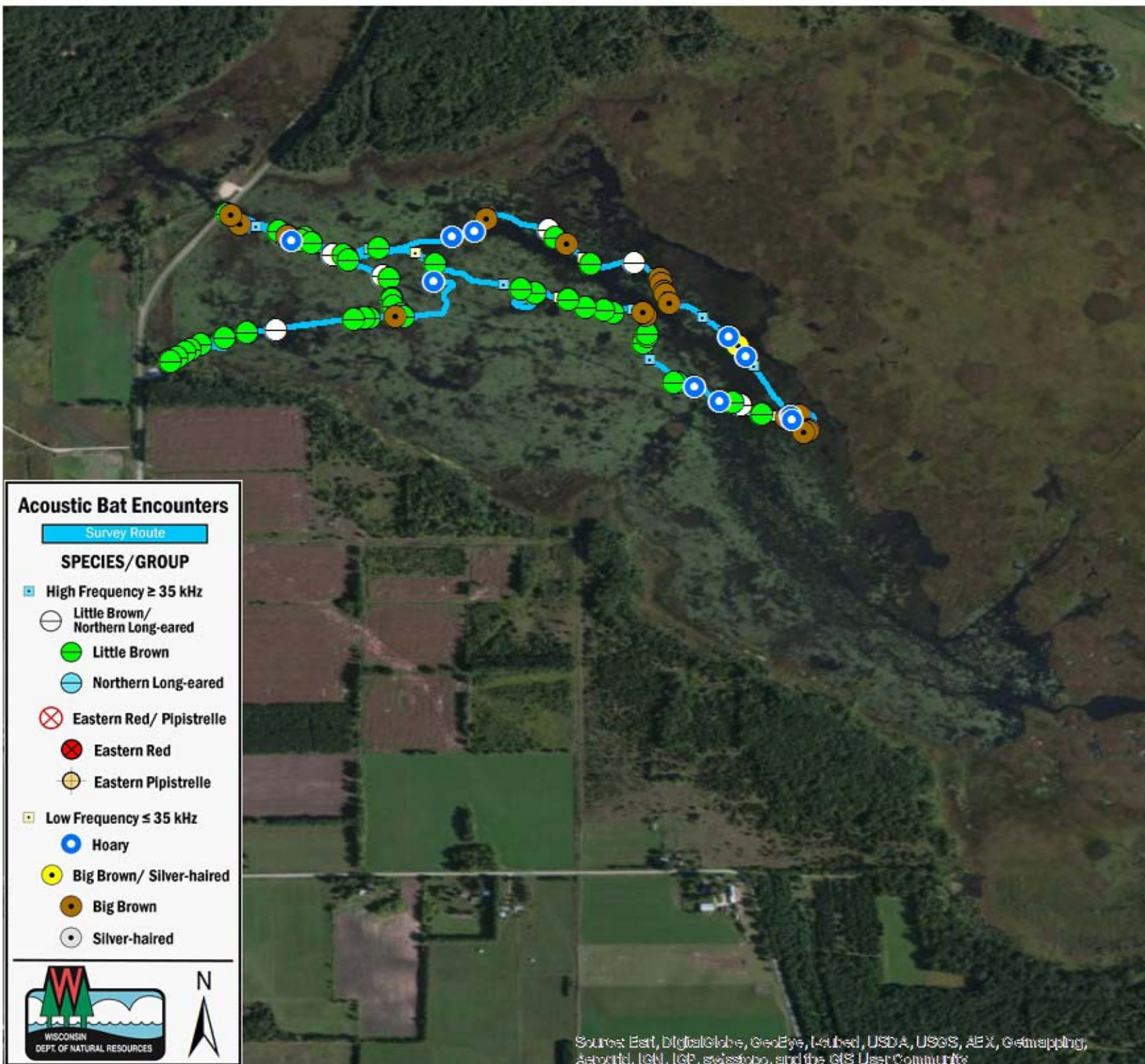
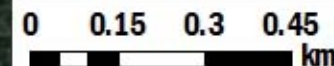
Relative Humidity (%)

57.0 68.0

Wind (m/s)

0.0 2.1

Notes: BATLAS Route
Survey completed clockwise
Low water forced improv. route



Acoustic Bat Encounters

Survey Route

SPECIES/GROUP

- ▣ High Frequency ≥ 35 kHz
 - Little Brown/
Northern Long-eared
 - Little Brown
 - Northern Long-eared
 - ⊗ Eastern Red/ Pipistrelle
 - Eastern Red
 - Eastern Pipistrelle
- ▣ Low Frequency ≤ 35 kHz
 - Hoary
 - Big Brown/ Silver-haired
 - Big Brown
 - Silver-haired



Source: Esri, DigitalGlobe, GeoEye, Earthstar, USDA, USGS, AeroGRID, IGN, IGP, swisstopo, and the GIS User Community