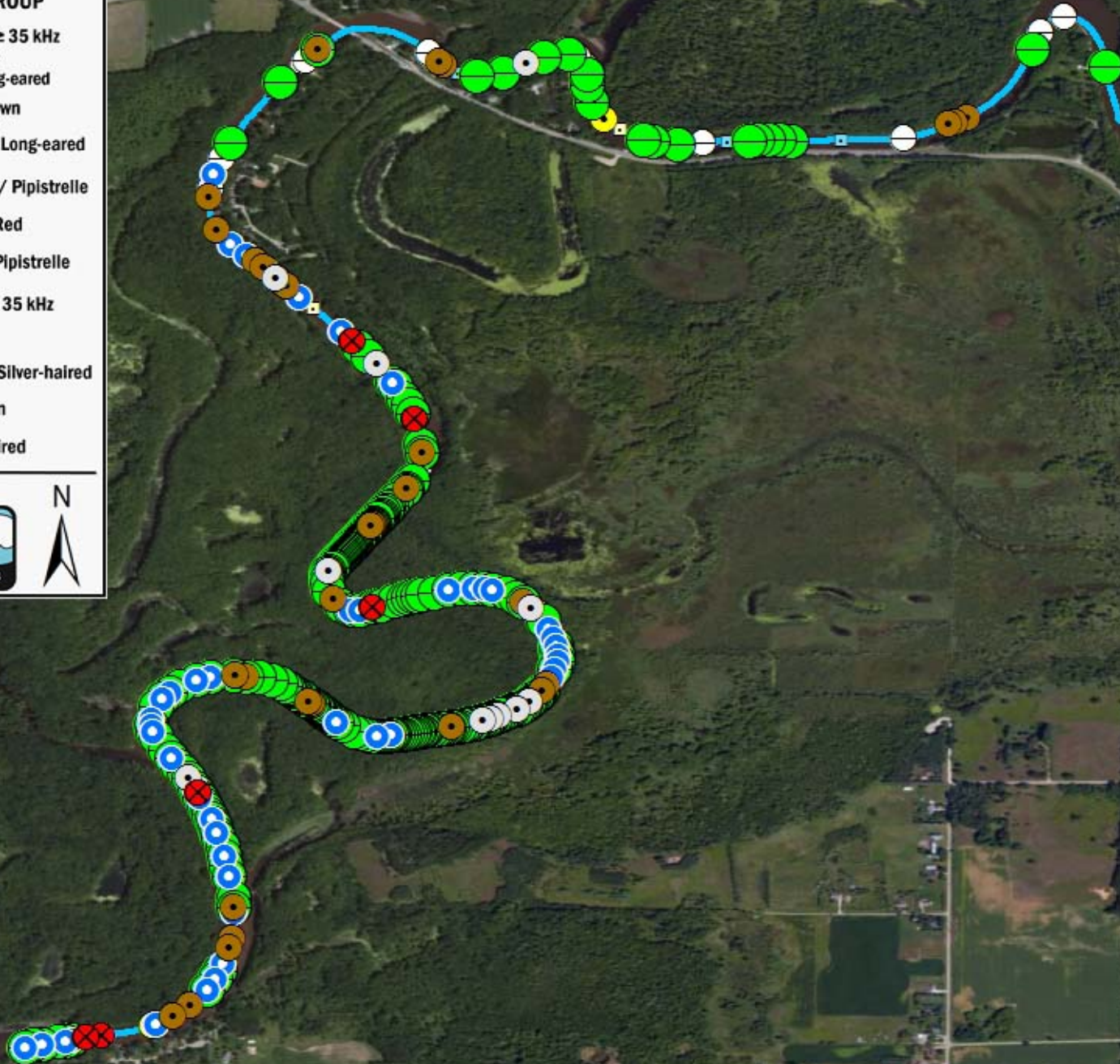


Acoustic Bat Encounters

Survey Route

SPECIES/GROUP

- High Frequency ≥ 35 kHz
 - Little Brown/
Northern Long-eared
 - Little Brown
 - Northern Long-eared
 - ⊗ Eastern Red/ Pipistrelle
 - Eastern Red
 - Eastern Pipistrelle
- Low Frequency ≤ 35 kHz
 - Hoary
 - Big Brown/ Silver-haired
 - Big Brown
 - Silver-haired



SURVEY RESULTS

Waupaca County
Wolf River 1
29 July 2011
RT 1406

Surveyors: G Emerson & H Kaarakka

Route Length: 7.68 km
5 Species Encountered

Time & Weather

Time (PM)

8:58 10:22

Temperature (F)

80.6 69.8

Relative Humidity (%)

58.0 88.0

Wind (m/s)

0.0 0.0

Notes: BATLAS Route
Survey completed NE to SW



0 0.2 0.4 0.6
km

Source: Esri, DigitalGlobe, GeoEye, Earthstar, USDA, USGS, AeroGRID, IGN, IGP, swisstopo, and the GIS User Community