



SURVEY RESULTS

Waushara County
White River Flowage
30 July 2011
RT 1408

Surveyors: G Emerson & A Badje

Route Length: 8.03 km
4 Species Encountered

Time & Weather

Time (PM)

9:00 10:58

Temperature (F)

68.0 68.0

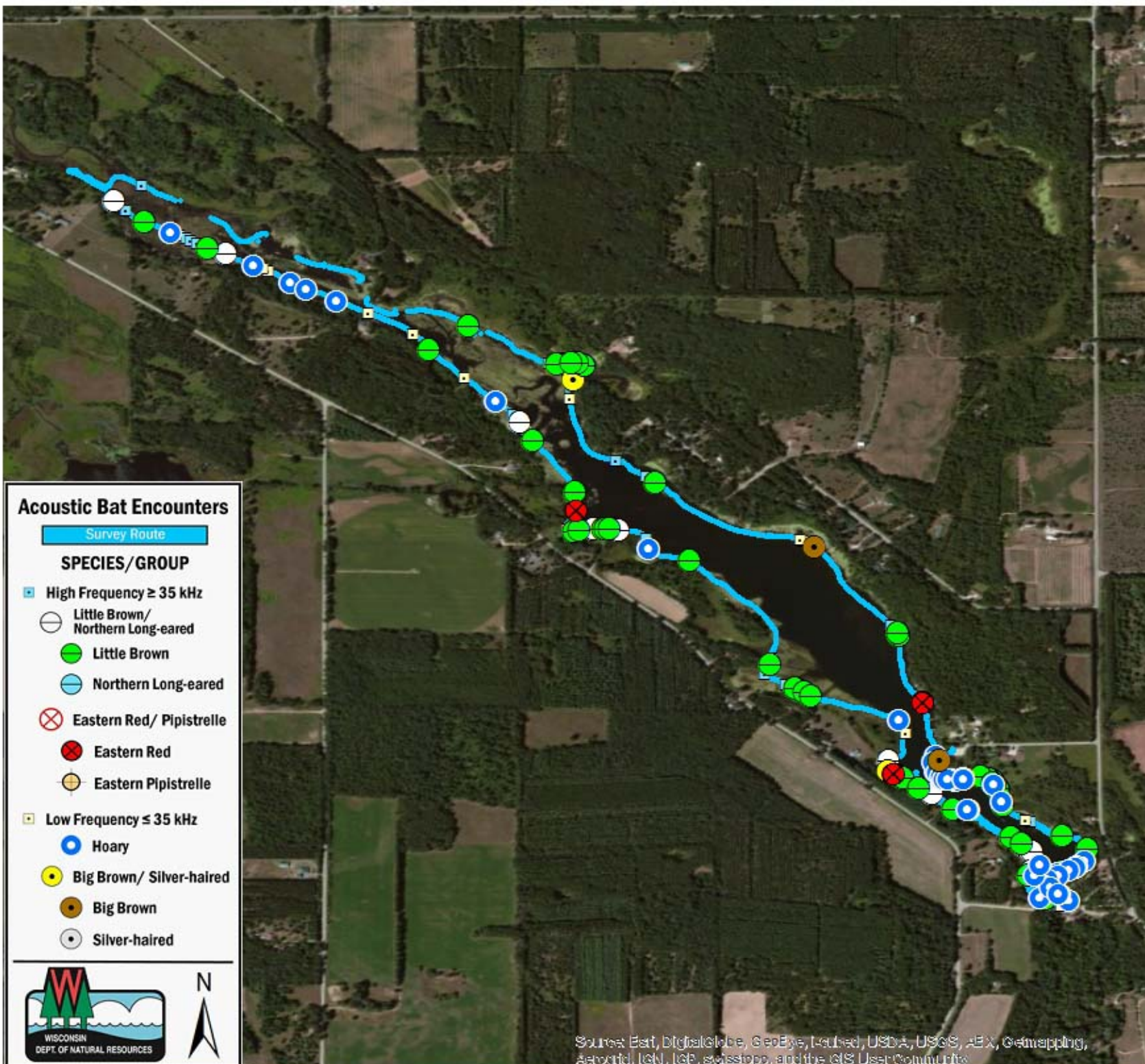
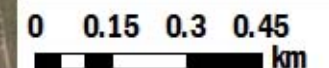
Relative Humidity (%)

88.0 88.0

Wind (m/s)

0.0 0.0

Notes: BATLAS Route. Survey completed counter-clockwise. GPS disconnected briefly in NW.



Acoustic Bat Encounters

Survey Route

SPECIES/GROUP

- High Frequency ≥ 35 kHz
 - Little Brown/ Northern Long-eared
 - Little Brown
 - Northern Long-eared
 - ⊗ Eastern Red/ Pipistrelle
 - Eastern Red
 - Eastern Pipistrelle
- Low Frequency ≤ 35 kHz
 - Hoary
 - Big Brown/ Silver-haired
 - Big Brown
 - Silver-haired



Source: Esri, DigitalGlobe, GeoEye, Earthstar, USDA, USGS, AeroGRID, IGN, IGP, swisstopo, and the GIS User Community