



## SURVEY RESULTS

Fond du Lac County

Long Lake

30 July 2011

RT 1412

Surveyors: A & S Rossler

Route Length: 7.35 km

4 Species Encountered

### Time & Weather

Time (PM)

9:15      11:04

Temperature (F)

68.0      66.2

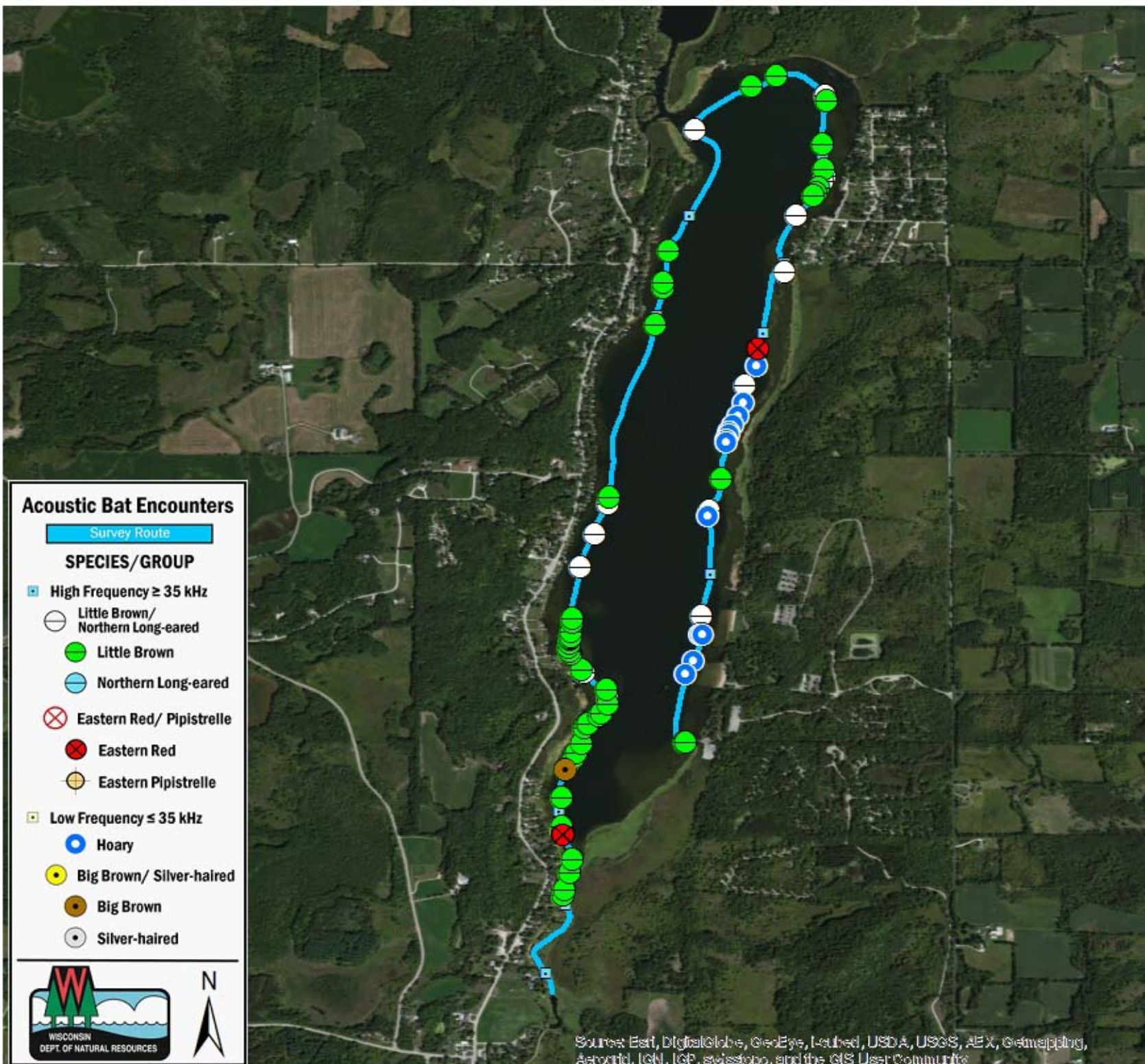
Relative Humidity (%)

78.0      83.0

Wind (m/s)

1.6      0.0

Notes: BATLAS Route  
Survey completed clockwise



### Acoustic Bat Encounters

Survey Route

#### SPECIES/GROUP

High Frequency  $\geq 35$  kHz

○ Little Brown/  
Northern Long-eared

● Little Brown

○ Northern Long-eared

⊗ Eastern Red/ Pipistrelle

⊗ Eastern Red

⊗ Eastern Pipistrelle

Low Frequency  $\leq 35$  kHz

● Hoary

● Big Brown/ Silver-haired

● Big Brown

○ Silver-haired



Source: Esri, DigitalGlobe, GeoEye, Earthstar, USDA, USGS, AeroX, GeoMapping, AeroGRID, IGN, IGP, swisstopo, and the GIS User Community

