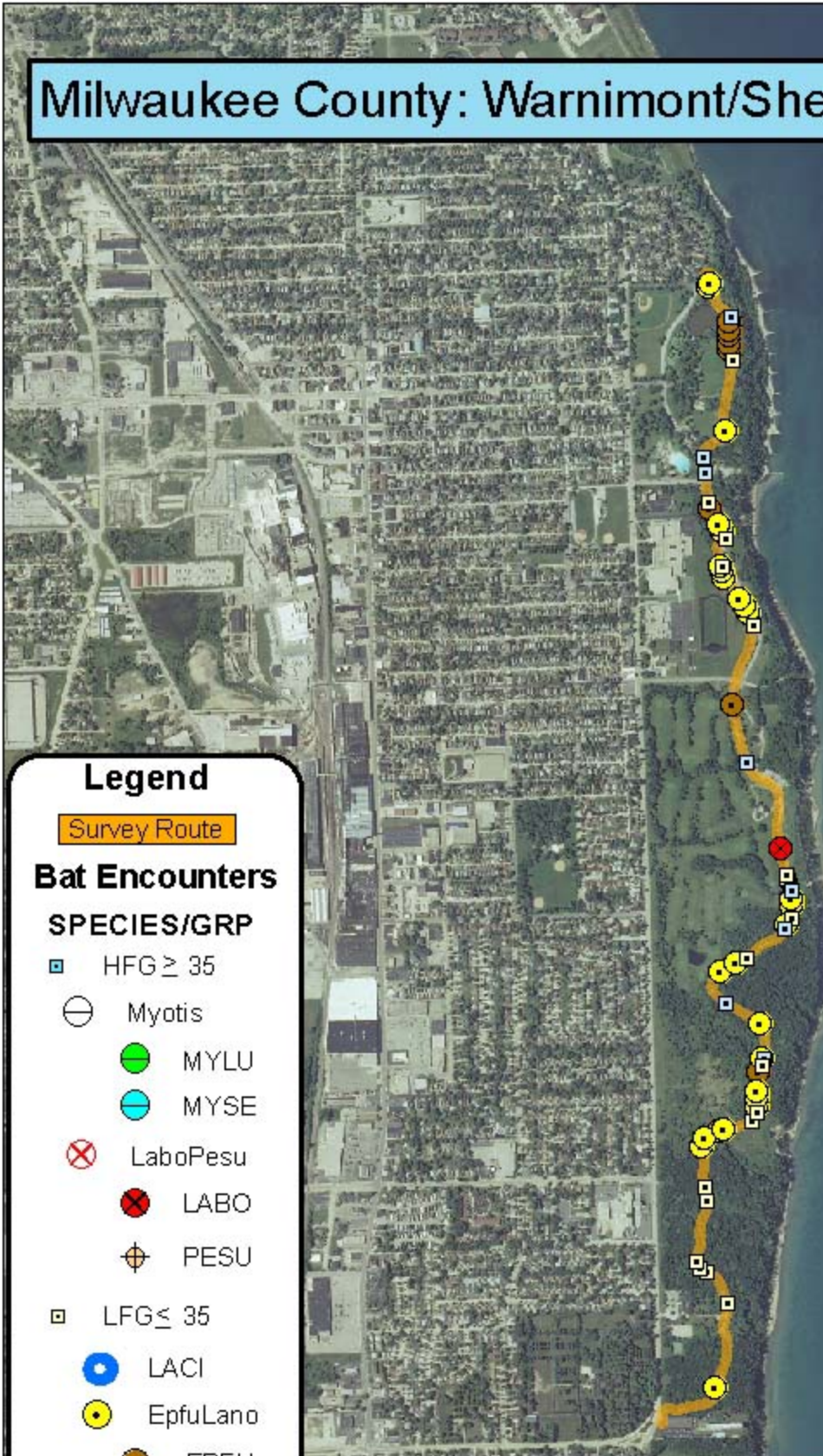


Milwaukee County: Warnimont/Sheridan Parks (RT 1416)



Legend

Survey Route

Bat Encounters

SPECIES/GRP

□ HFG ≥ 35

⊖ Myotis

● MYLU

● MYSE

⊗ LaboPesu

⊗ LABO

⊕ PESU

□ LFG ≤ 35

● LACI

● EpfuLano

● EPFU

● LANO



Ecological Inventory
& Monitoring

0 0.25 0.5 1 Kilometers

Date, Time, & Weather

3 Aug 11

Sunset 8:12 PM

	Time (PM)	Temp (°F)	Relative Humidity	Wind Speed
START	8:44	73.0°	90%	0.0 m/s
END	9:36	72.0°	100%	0.0 m/s

Notes: 2 bat species found

Surveyors: J. Toth, K. Johnson

Route Distance: 4.4 km