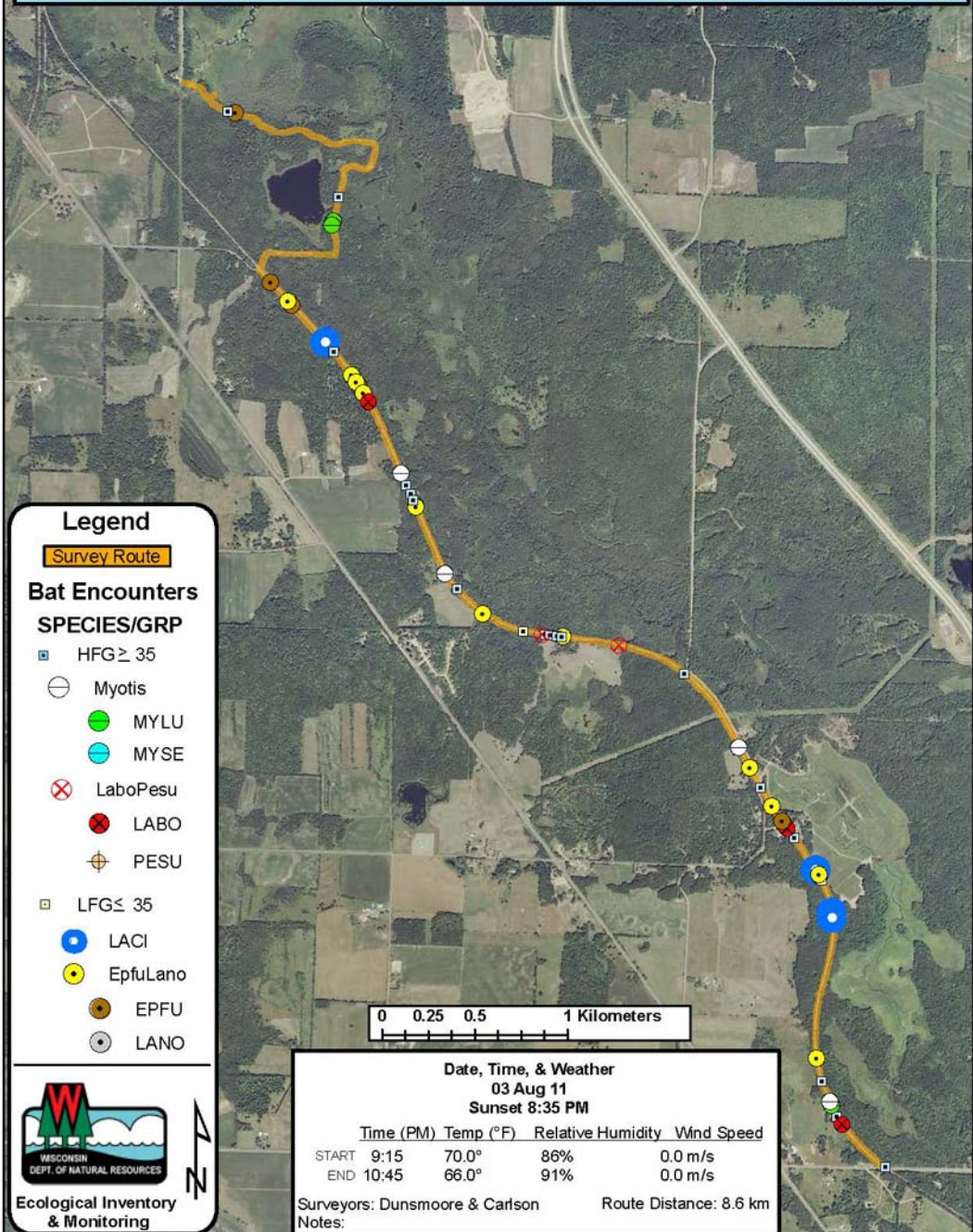


Washburn County: Beaver Brook Wildlife Area/Wild River Trail (RT1418)



Legend

Survey Route

Bat Encounters

SPECIES/GRP

□ HFG ≥ 35

○ Myotis

● MYLU

● MYSE

⊗ LaboPesu

⊗ LABO

⊕ PESU

□ LFG ≤ 35

● LACI

● EpfuLano

● EPFU

● LANO

0 0.25 0.5 1 Kilometers

Date, Time, & Weather

03 Aug 11

Sunset 8:35 PM

Time (PM)	Temp (°F)	Relative Humidity	Wind Speed
START 9:15	70.0°	86%	0.0 m/s
END 10:45	66.0°	91%	0.0 m/s

Surveyors: Dunsmoore & Carlson

Route Distance: 8.6 km

Notes:



Ecological Inventory
& Monitoring

