

Milwaukee County: Falk Park (RT 1419)

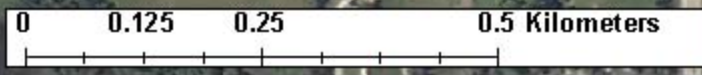
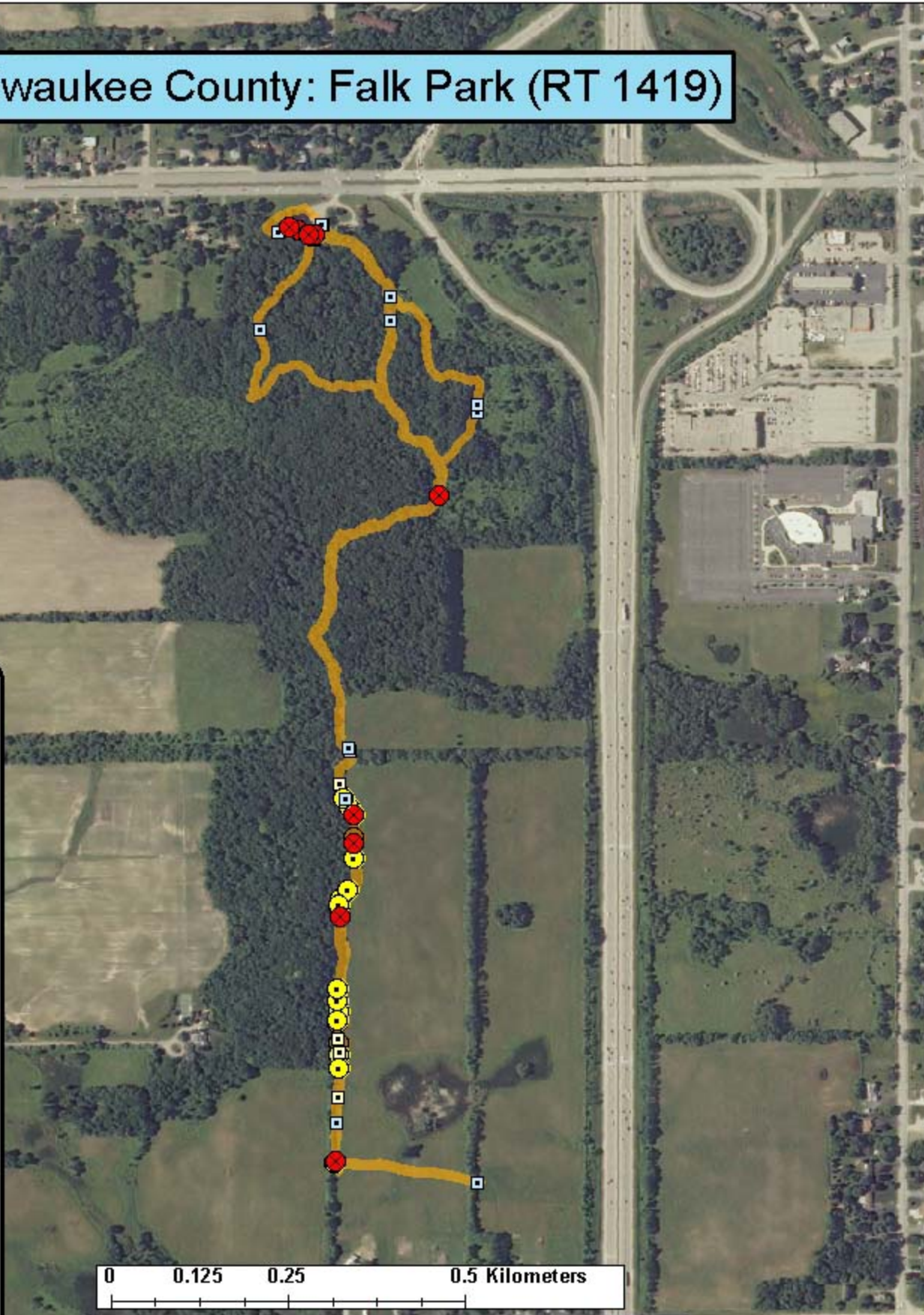
Legend

Survey Route

Bat Encounters

SPECIES/GRP

- HFG ≥ 35
- ⊖ Myotis
- MYLU
- MYSE
- ⊗ LaboPesu
- ⊗ LABO
- ⊕ PESU
- LFG ≤ 35
- LACI
- EpfuLano
- EPFU
- LANO



Date, Time, & Weather
11 Aug 11
Sunset 7:59 PM

	Time (PM)	Temp (°F)	Relative Humidity	Wind Speed
START	8:45	73.0°	57%	3.0 m/s
END	10:26	72.0°	57%	3.5 m/s

Notes: 2 bat species found
 Route Distance: 3.7 km
 Surveyors: J. Callaghan, N. Gunder

Ecological Inventory & Monitoring