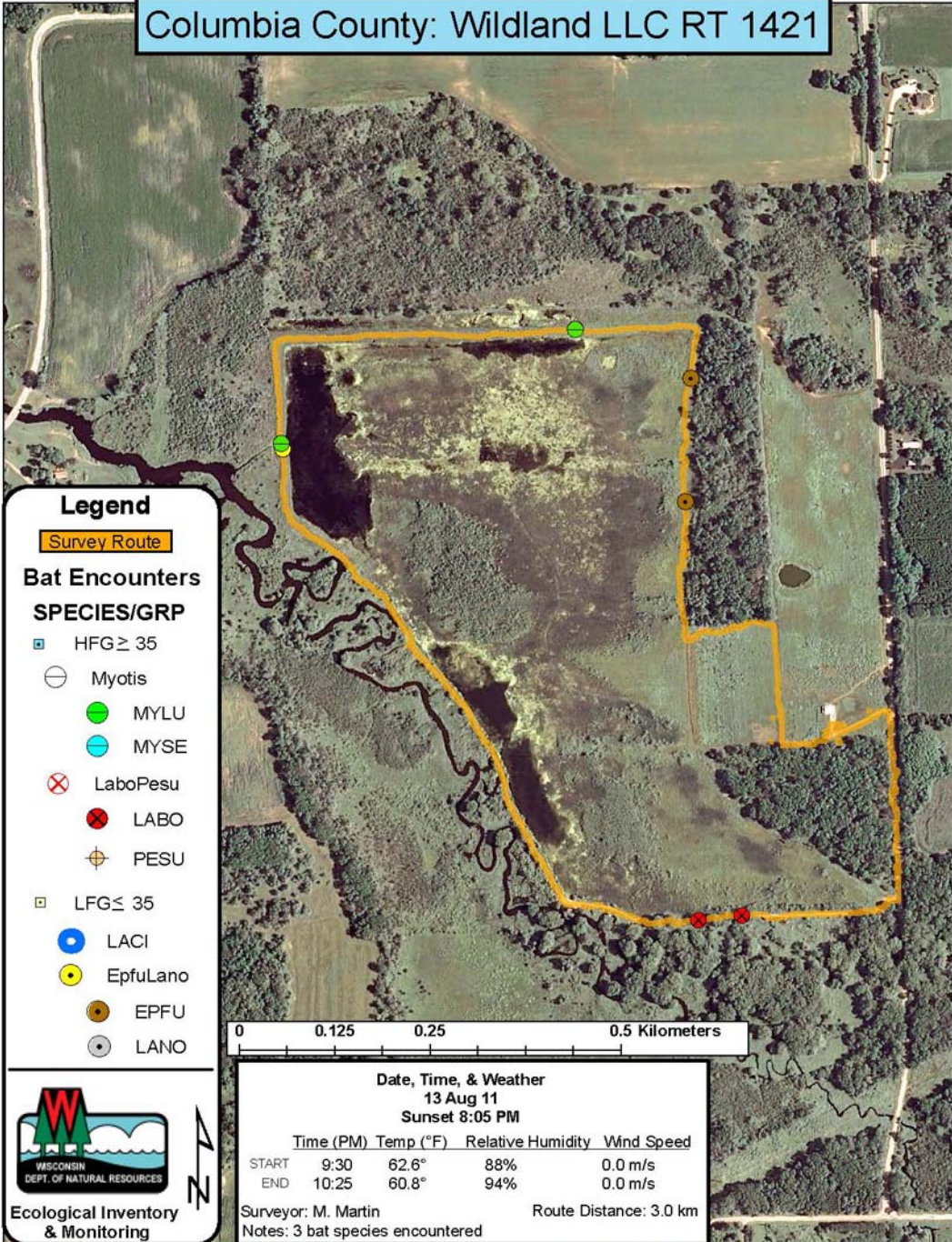


# Columbia County: Wildland LLC RT 1421



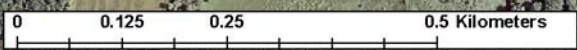
## Legend

**Survey Route**

### Bat Encounters

#### SPECIES/GRP

- HFG ≥ 35
- Myotis
- MYLU
- MYSE
- ⊗ LaboPesu
- ⊗ LABO
- ⊕ PESU
- LFG ≤ 35
- LACI
- EpfuLano
- EPFU
- LANO



### Date, Time, & Weather

13 Aug 11

Sunset 8:05 PM

	Time (PM)	Temp (°F)	Relative Humidity	Wind Speed
START	9:30	62.6°	88%	0.0 m/s
END	10:25	60.8°	94%	0.0 m/s

Surveyor: M. Martin

Route Distance: 3.0 km

Notes: 3 bat species encountered



Ecological Inventory & Monitoring

