

Washburn County: Shell Lake Drive (RT 1447)

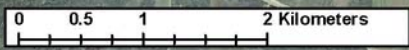
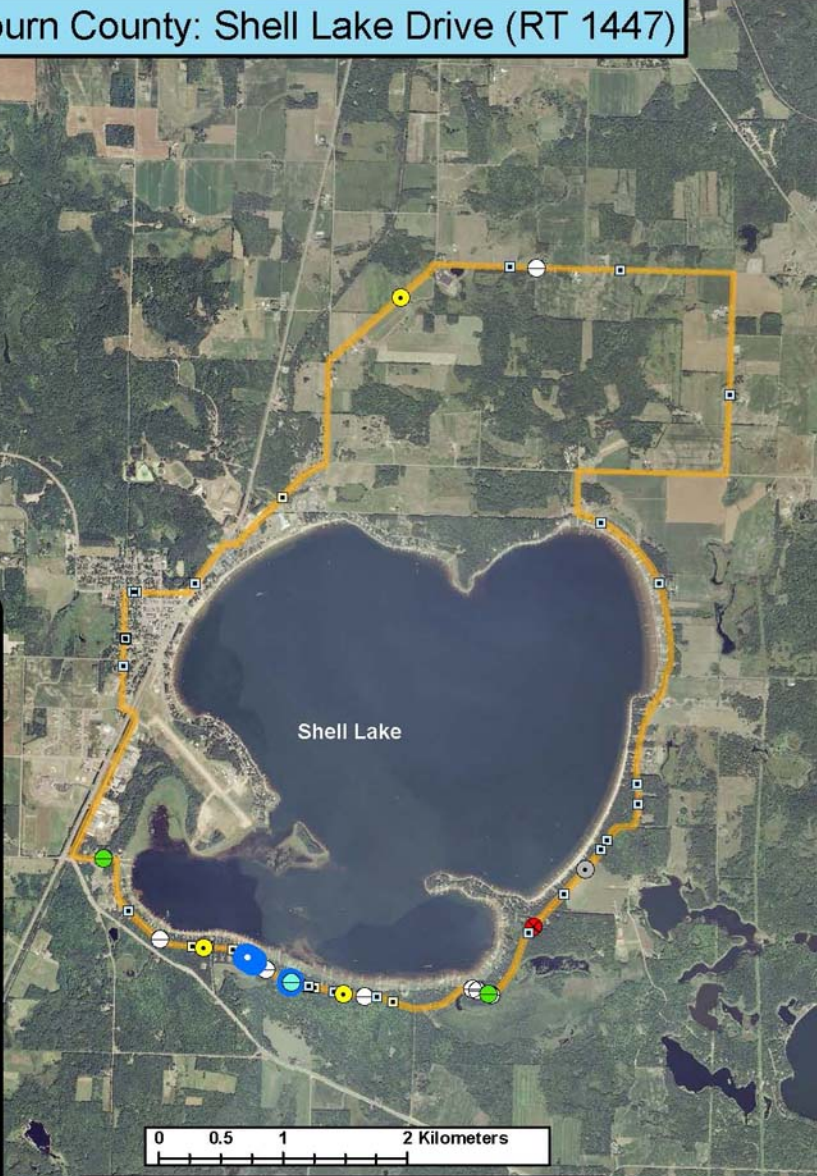
Legend

Survey Route

Bat Encounters

SPECIES/GRP

- HFG ≥ 35
- Myotis
- MYLU
- MYSE
- ⊗ LaboPesu
- ⊗ LABO
- ⊕ PESU
- LFG ≤ 35
- LACI
- EpfuLano
- EPFU
- LANO



Ecological Inventory & Monitoring

Date, Time, & Weather
 29 Aug 11
 Sunset 7:53 PM

	Time (PM)	Temp (°F)	Relative Humidity	Wind Speed
START	8:30	66.4°	81%	1.5 m/s
END	9:52	64.4°	85%	0.0 m/s

Surveyor: Schalkowski Route Distance: 21 km
 Notes: 5 bat species encountered, survey completed on bicycle