

# Bayfield County: Town of Bayfield (RT 1453)

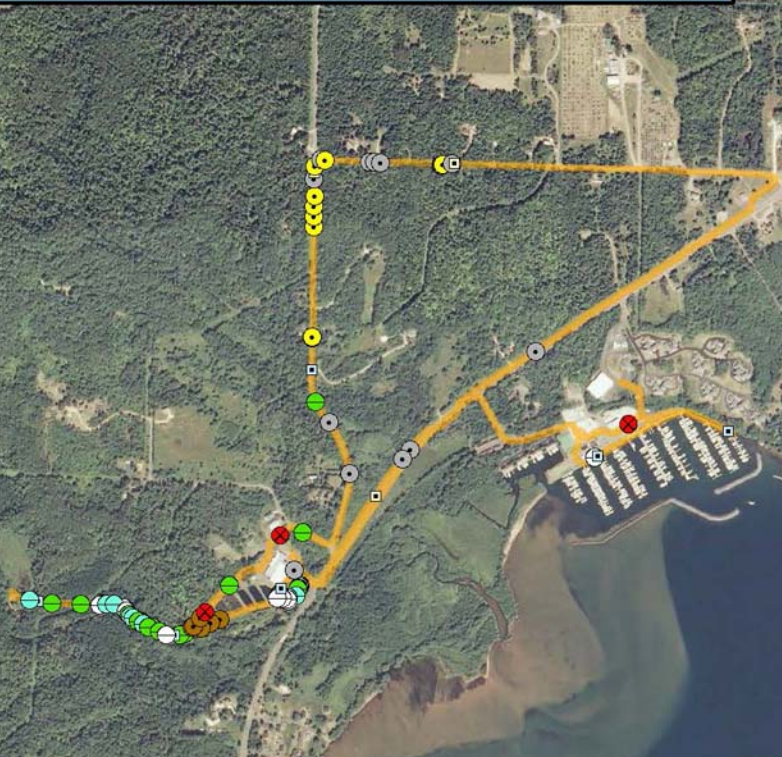
## Legend

**Survey Route**

### Bat Encounters

#### SPECIES/GRP

- ▣ HFG ≥ 35
- Myotis
- MYLU
- MYSE
- ⊗ LaboPesu
- LABO
- ⊕ PESU
- ▣ LFG ≤ 35
- LACI
- EpfuLano
- EPFU
- LANO



0 0.125 0.25 0.5 Kilometers

Lake Superior



Ecological Inventory  
& Monitoring

Date, Time, & Weather  
20 Aug 11  
Sunset 8:05 PM

	Time (PM)	Temp (°F)	Relative Humidity	Wind Speed
START	8:26	62.1°	80%	2.1 m/s
END	9:55	60.1°	80%	5.7 m/s

Surveyors: P. & P. McGranahan  
Notes: 5 bat species encountered

Route Distance: 7.2 km