

Vilas County: Awassa Trail - St. Germain (RT 1455)

Lake Content

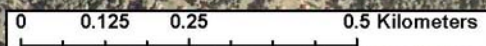
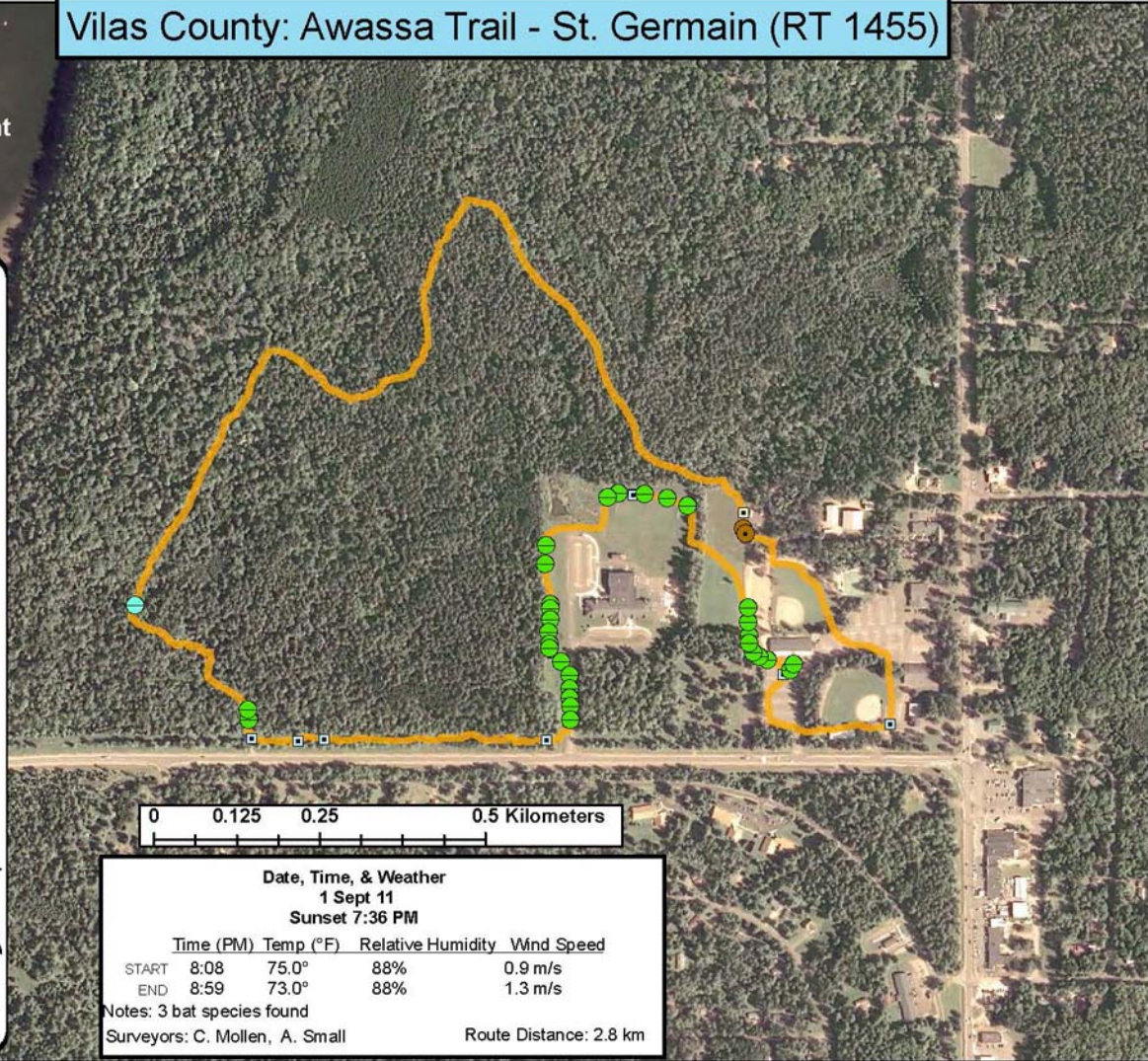
Legend

Survey Route

Bat Encounters

SPECIES/GRP

- ▣ HFG ≥ 35
- ⊖ Myotis
- MYLU
- MYSE
- ⊗ LaboPesu
- ⊗ LABO
- ⊕ PESU
- ▣ LFG ≤ 35
- LACI
- EpfuLano
- EPFU
- LANO



Date, Time, & Weather
 1 Sept 11
 Sunset 7:36 PM

	Time (PM)	Temp (°F)	Relative Humidity	Wind Speed
START	8:08	75.0°	88%	0.9 m/s
END	8:59	73.0°	88%	1.3 m/s

Notes: 3 bat species found

Surveyors: C. Mollen, A. Small

Route Distance: 2.8 km



Ecological Inventory
 & Monitoring