

# Dane County: Stricker's Pond (Madison) RT 1472

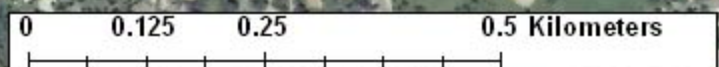
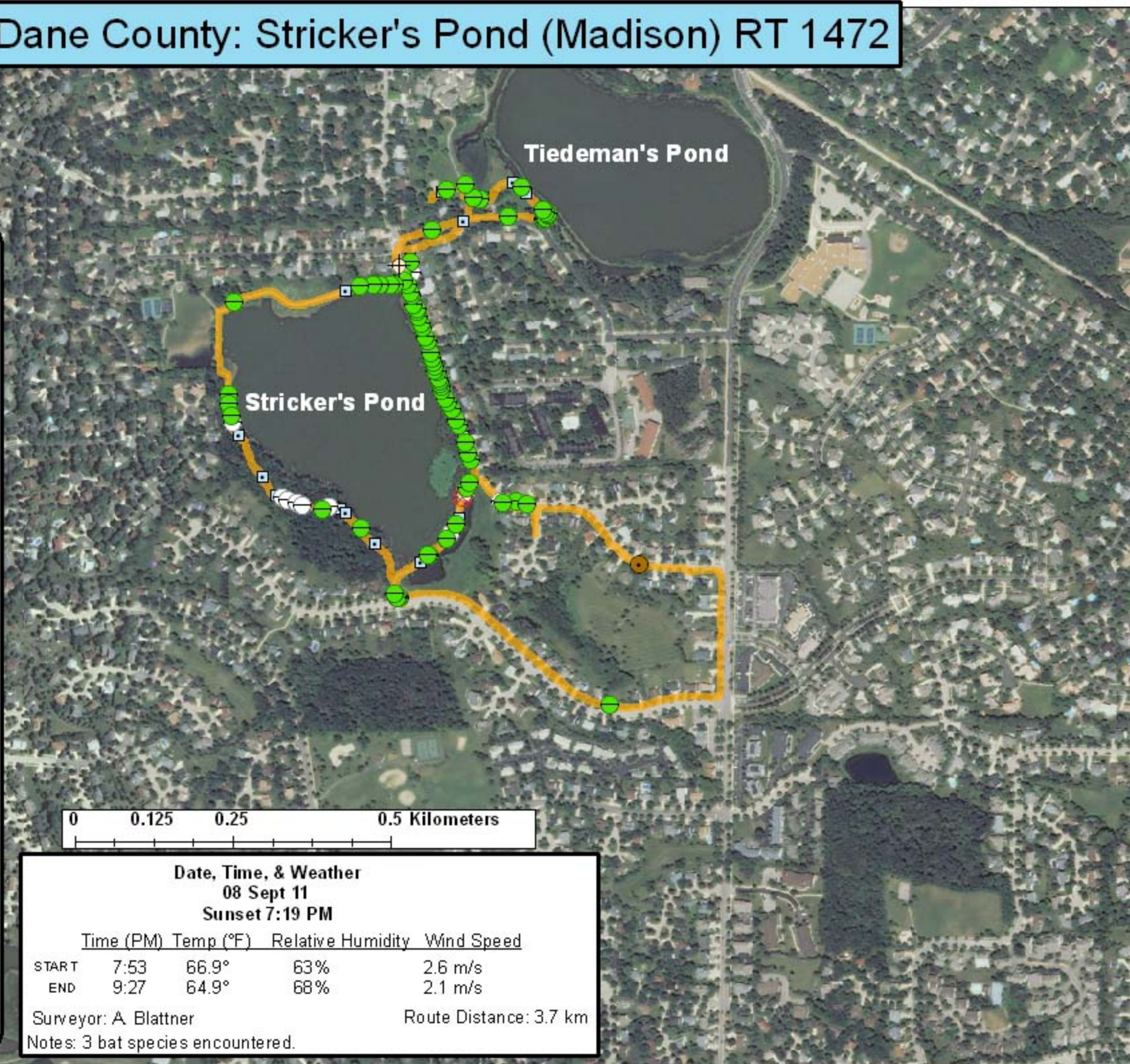
**Legend**

**Survey Route**

**Bat Encounters**

**SPECIES/GRP**

- HFG ≥ 35
- ⊖ Myotis
- MYLU
- MYSE
- ⊗ LaboPesu
- ⊗ LABO
- ⊕ PESU
- LFG ≤ 35
- LACI
- EpfuLano
- EPFU
- LANO



**Date, Time, & Weather**  
**08 Sept 11**  
**Sunset 7:19 PM**

	Time (PM)	Temp (°F)	Relative Humidity	Wind Speed
START	7:53	66.9°	63%	2.6 m/s
END	9:27	64.9°	68%	2.1 m/s

Surveyor: A. Blattner      Route Distance: 3.7 km

Notes: 3 bat species encountered.

**Ecological Inventory & Monitoring**