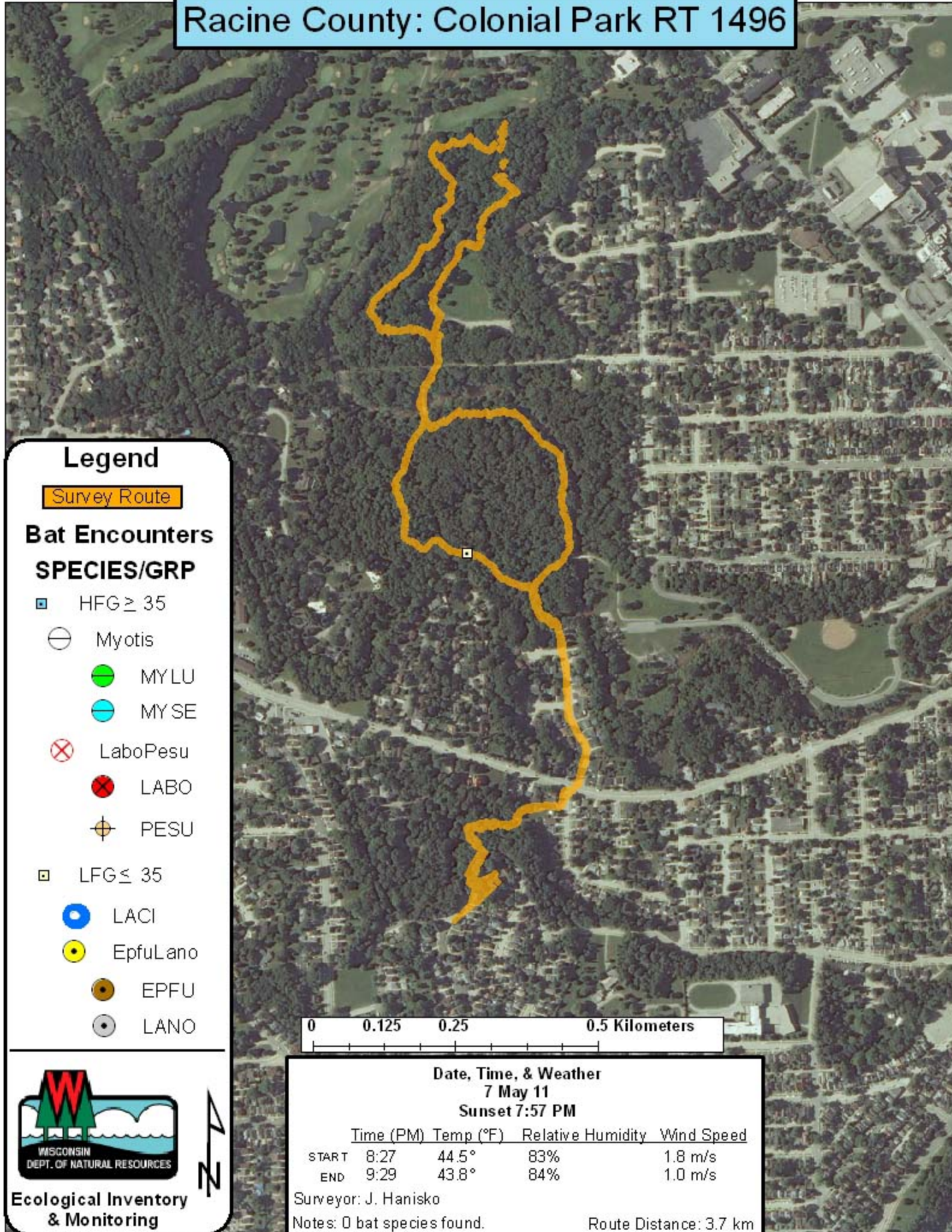


# Racine County: Colonial Park RT 1496

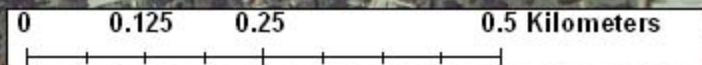


## Legend

Survey Route

### Bat Encounters SPECIES/GRP

- ▣ HFG  $\geq 35$
- ⊖ Myotis
- MYLU
- MYSE
- ⊗ LaboPesu
- ⊗ LABO
- ⊕ PESU
  
- ▣ LFG  $\leq 35$
- LACI
- EpfuLano
- EPFU
- LANO



**Ecological Inventory  
& Monitoring**

**Date, Time, & Weather**  
7 May 11  
Sunset 7:57 PM

	Time (PM)	Temp (°F)	Relative Humidity	Wind Speed
START	8:27	44.5°	83%	1.8 m/s
END	9:29	43.8°	84%	1.0 m/s

Surveyor: J. Hanisko  
Notes: 0 bat species found.                      Route Distance: 3.7 km