

Kenosha County: Pleasant Prairie RT 1503

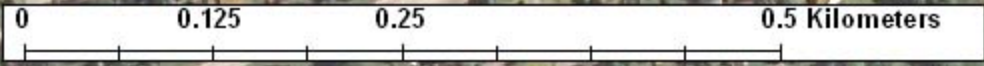
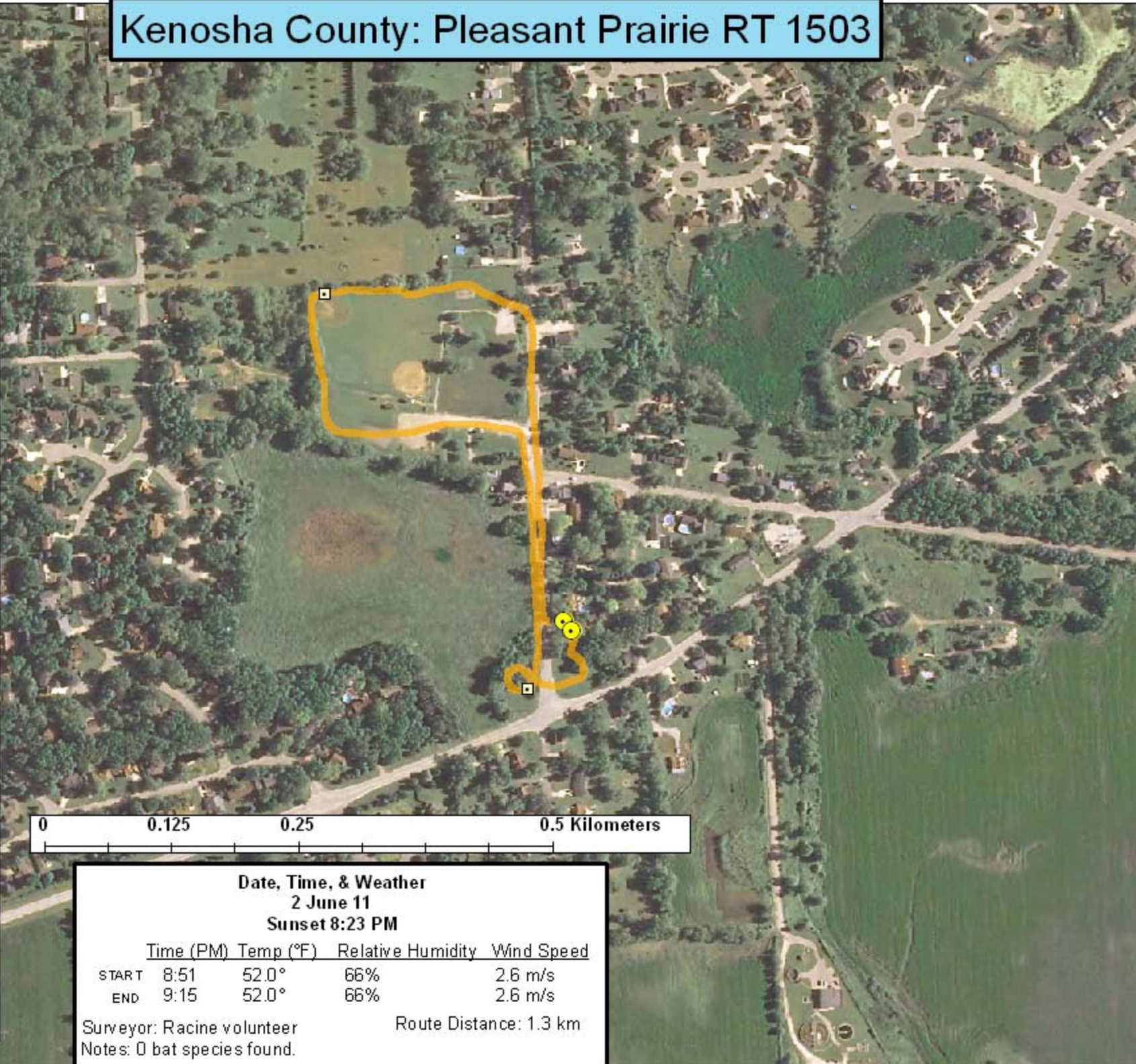
Legend

Survey Route

Bat Encounters

SPECIES/GRP

- ▣ HFG ≥ 35
- ⊖ Myotis
- MYLU
- MYSE
- ⊗ LaboPesu
- LABO
- ⊕ PESU
- ▣ LFG ≤ 35
- LACI
- EpfuLano
- EPFU
- LANO



Date, Time, & Weather
2 June 11
Sunset 8:23 PM

	Time (PM)	Temp (°F)	Relative Humidity	Wind Speed
START	8:51	52.0°	66%	2.6 m/s
END	9:15	52.0°	66%	2.6 m/s

Surveyor: Racine volunteer Route Distance: 1.3 km
 Notes: 0 bat species found.

Ecological Inventory & Monitoring