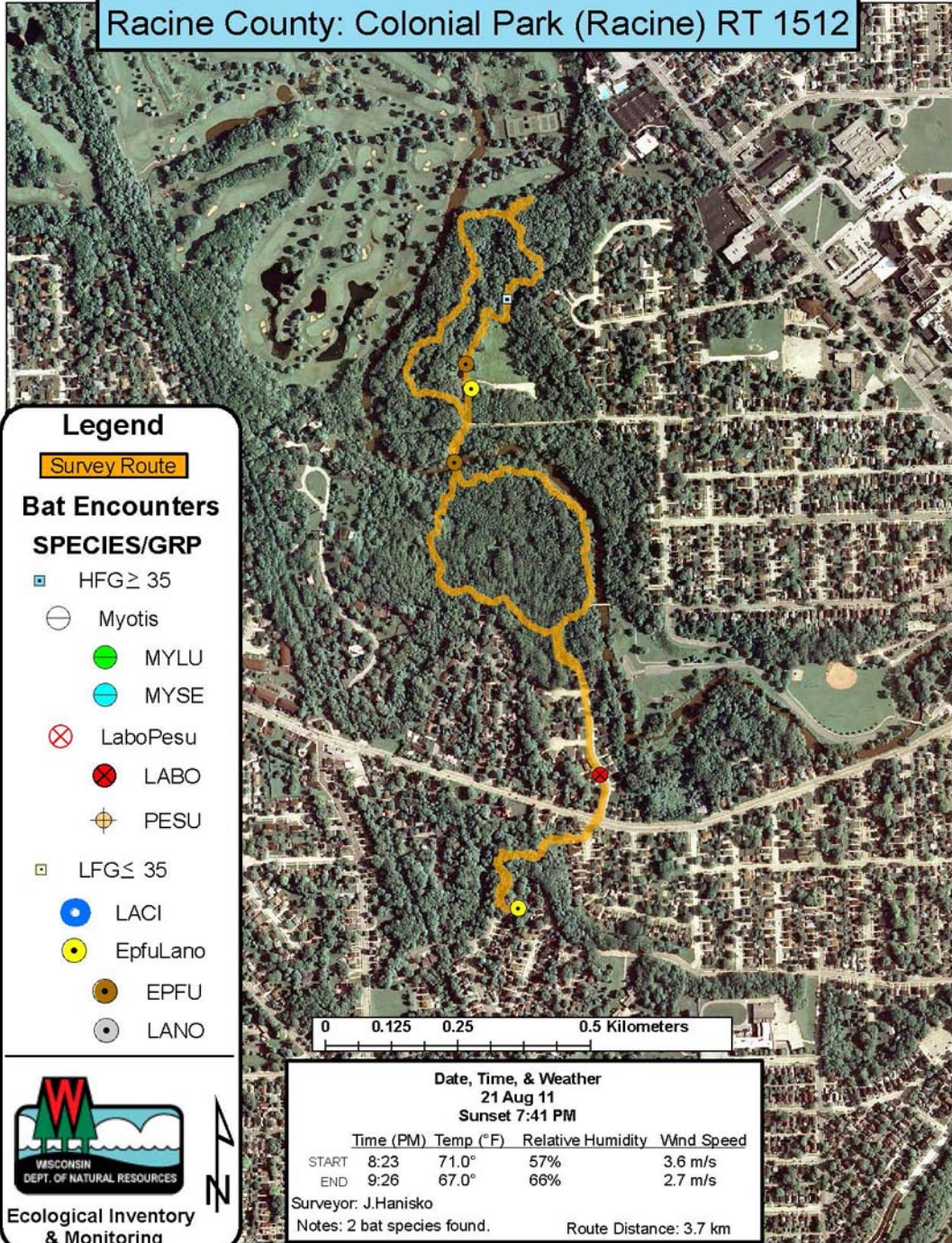


# Racine County: Colonial Park (Racine) RT 1512



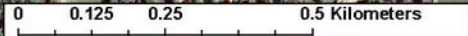
## Legend

Survey Route

### Bat Encounters

#### SPECIES/GRP

- ▣ HFG ≥ 35
- ⊖ Myotis
- MYLU
- MYSE
- ⊗ LaboPesu
- ⊗ LABO
- ⊕ PESU
- ▣ LFG ≤ 35
- LACI
- EpfuLano
- EPFU
- LANO



Ecological Inventory & Monitoring

Date, Time, & Weather				
21 Aug 11				
Sunset 7:41 PM				
	Time (PM)	Temp (°F)	Relative Humidity	Wind Speed
START	8:23	71.0°	57%	3.6 m/s
END	9:26	67.0°	66%	2.7 m/s
Surveyor: J.Hanisko				
Notes: 2 bat species found.			Route Distance: 3.7 km	