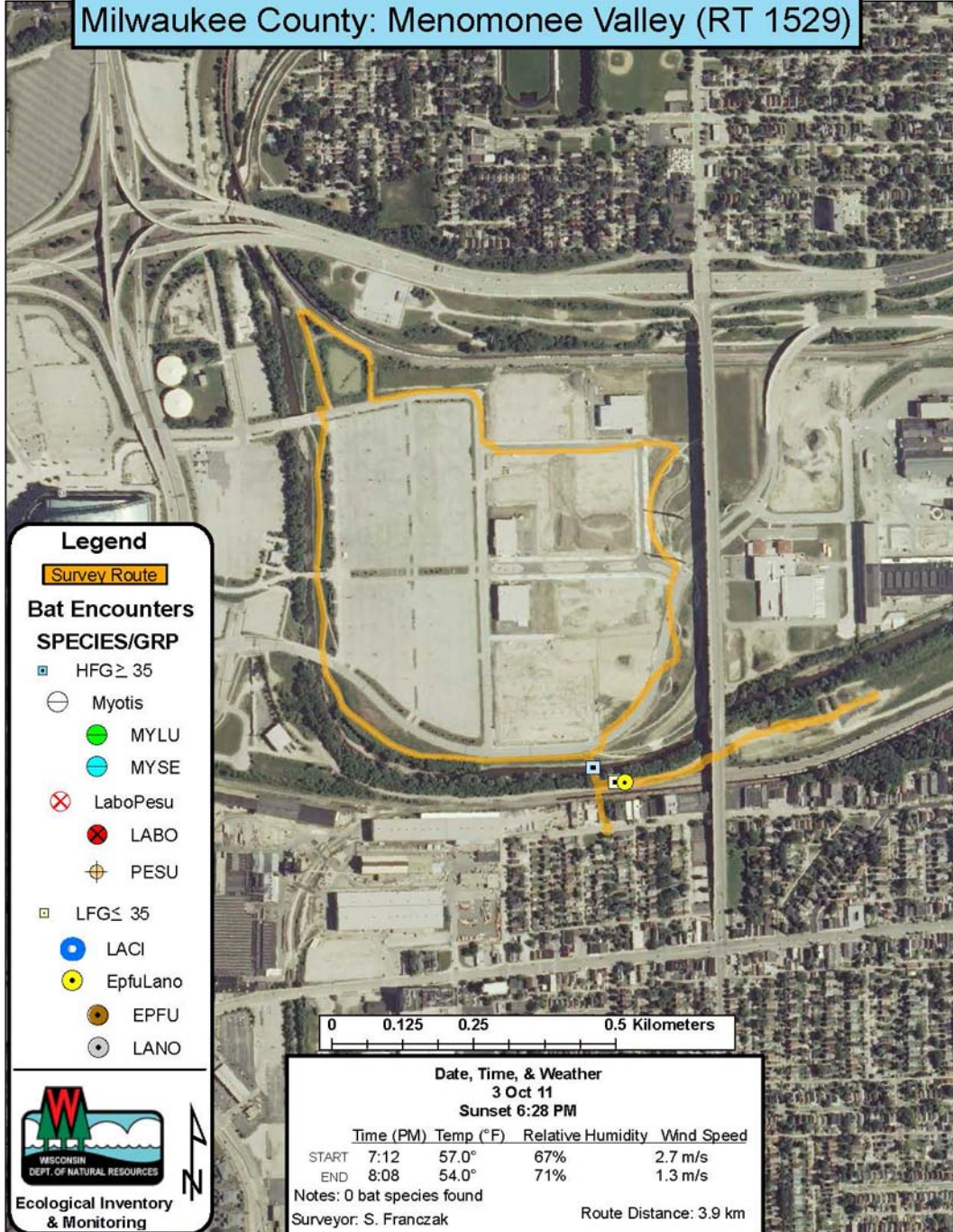


# Milwaukee County: Menomonee Valley (RT 1529)



## Legend

**Survey Route**

### Bat Encounters

#### SPECIES/GRP

- HFG  $\geq$  35
- Myotis
- MYLU
- MYSE
- ⊗ LaboPesu
- ⊗ LABO
- ⊕ PESU
- LFG  $\leq$  35
- LACI
- EpfuLano
- EPFU
- LANO

0 0.125 0.25 0.5 Kilometers

#### Date, Time, & Weather

3 Oct 11

Sunset 6:28 PM

	Time (PM)	Temp (°F)	Relative Humidity	Wind Speed
START	7:12	57.0°	67%	2.7 m/s
END	8:08	54.0°	71%	1.3 m/s

Notes: 0 bat species found

Surveyor: S. Franczak

Route Distance: 3.9 km



Ecological Inventory  
& Monitoring

