

Manitowoc County: Devil's River Campground (RT 1540)

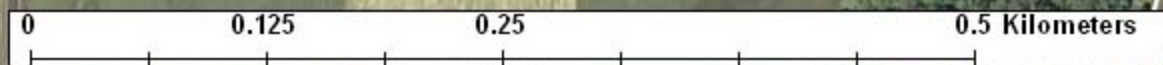
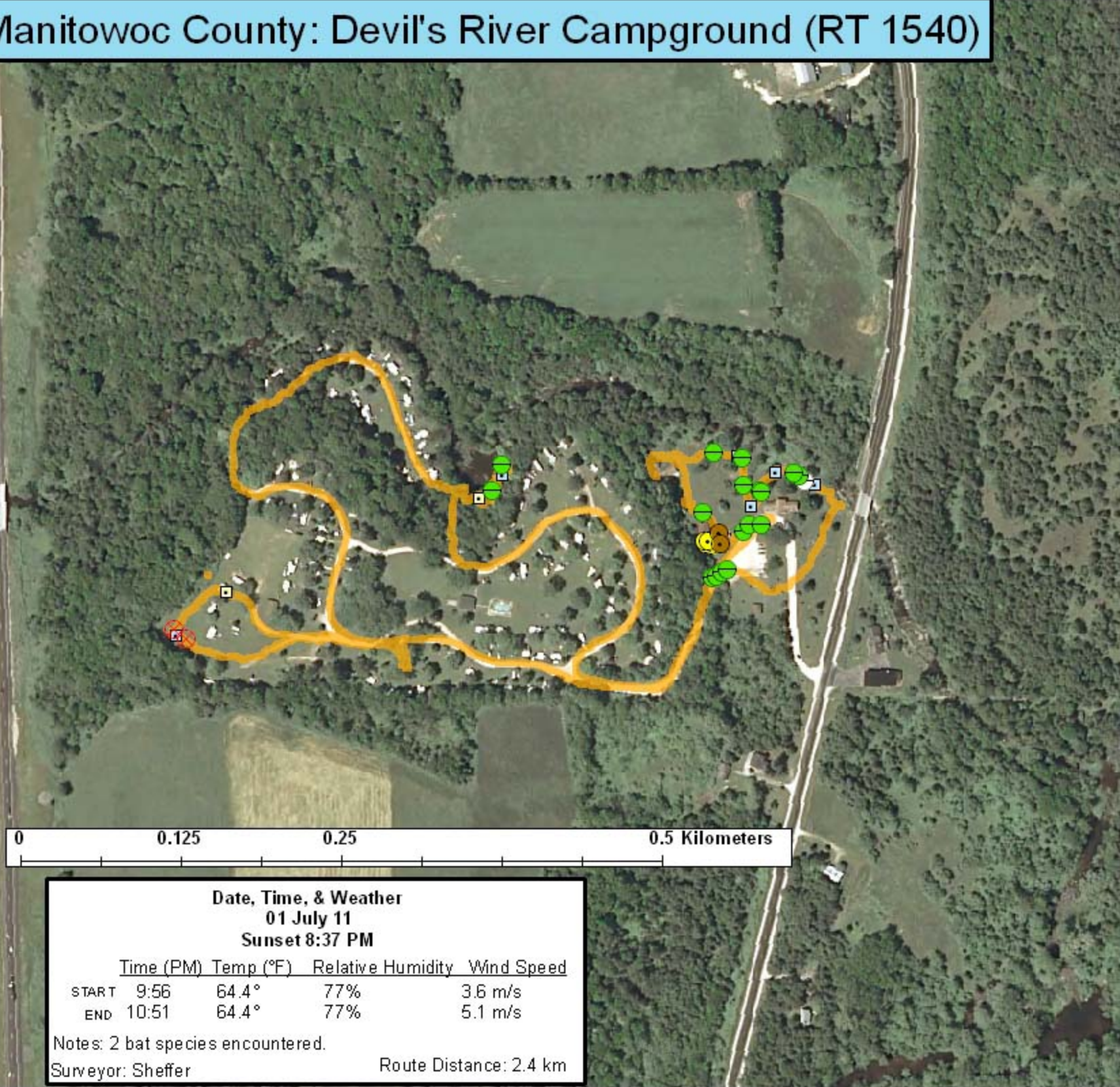
Legend

Survey Route

Bat Encounters

SPECIES/GRP

- ▣ HFG ≥ 35
- ⊖ Myotis
- MYLU
- MYSE
- ⊗ LaboPesu
- LABO
- ⊕ PESU
- ▣ LFG ≤ 35
- LACI
- EpfuLano
- EPFU
- LANO



Ecological Inventory & Monitoring

Date, Time, & Weather
01 July 11
Sunset 8:37 PM

	Time (PM)	Temp (°F)	Relative Humidity	Wind Speed
START	9:56	64.4°	77%	3.6 m/s
END	10:51	64.4°	77%	5.1 m/s

Notes: 2 bat species encountered.
 Surveyor: Sheffer Route Distance: 2.4 km