



## SURVEY RESULTS

Waupaca County  
Partridge Lake  
29 July 2011  
RT 2197

Surveyors: A Blattner & P Peterson  
Route Length: 5.85 km  
6 Species Encountered

### Time & Weather

Time (PM)

9:17      10:37

Temperature (F)

71.6      69.8

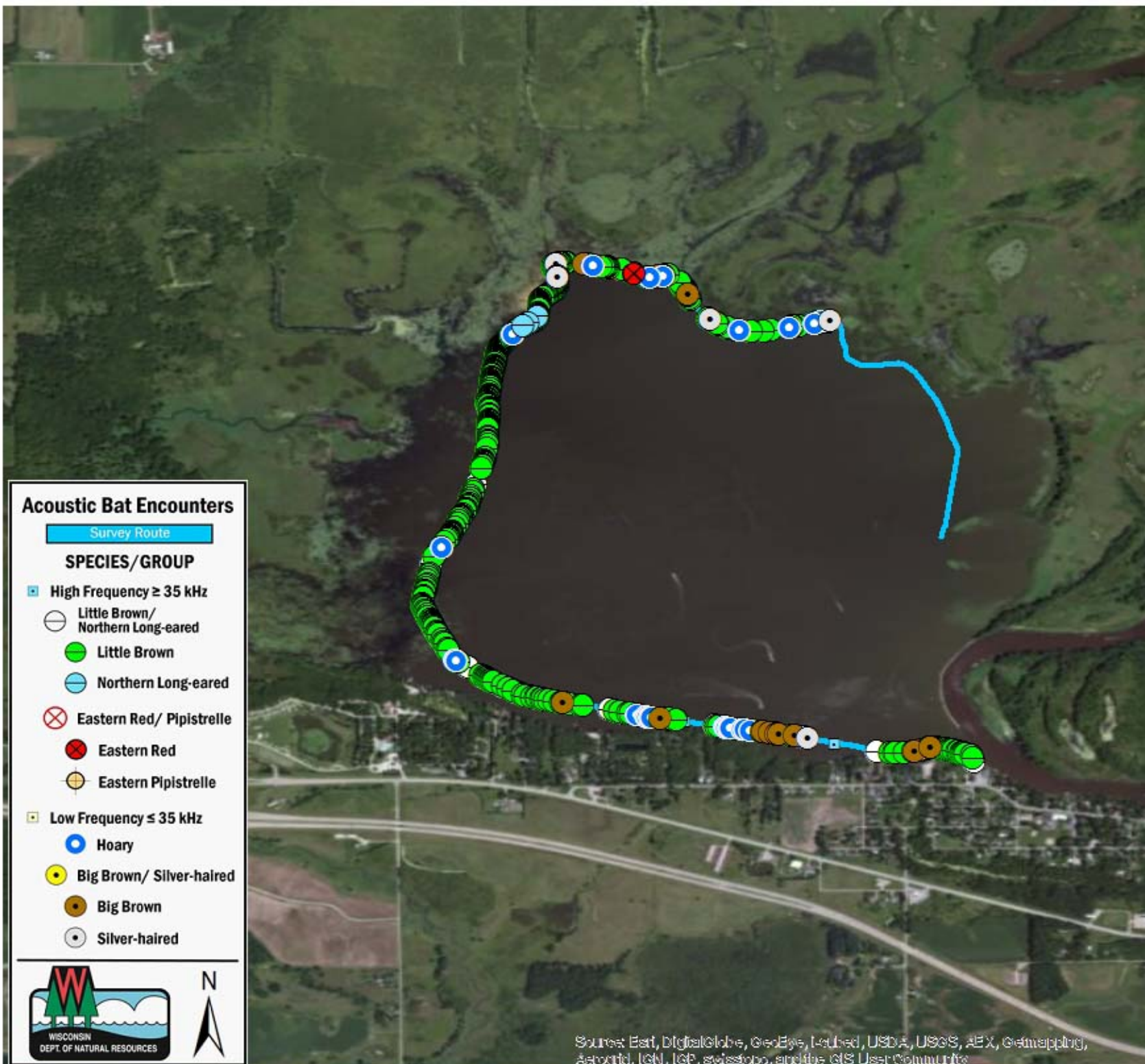
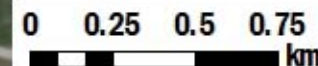
Relative Humidity (%)

83.0      88.0

Wind (m/s)

0.0      0.0

Notes: BATLAS Route  
Survey completed  
counter-clockwise



### Acoustic Bat Encounters

Survey Route

#### SPECIES/GROUP

High Frequency  $\geq 35$  kHz

○ Little Brown/  
Northern Long-eared

● Little Brown

● Northern Long-eared

⊗ Eastern Red/ Pipistrelle

⊗ Eastern Red

⊗ Eastern Pipistrelle

Low Frequency  $\leq 35$  kHz

● Hoary

● Big Brown/ Silver-haired

● Big Brown

○ Silver-haired



Sources: Esri, DigitalGlobe, GeoEye, Earthstar, USDA, USGS, AeroGRID, IGN, IGP, swisstopo, and the GIS User Community