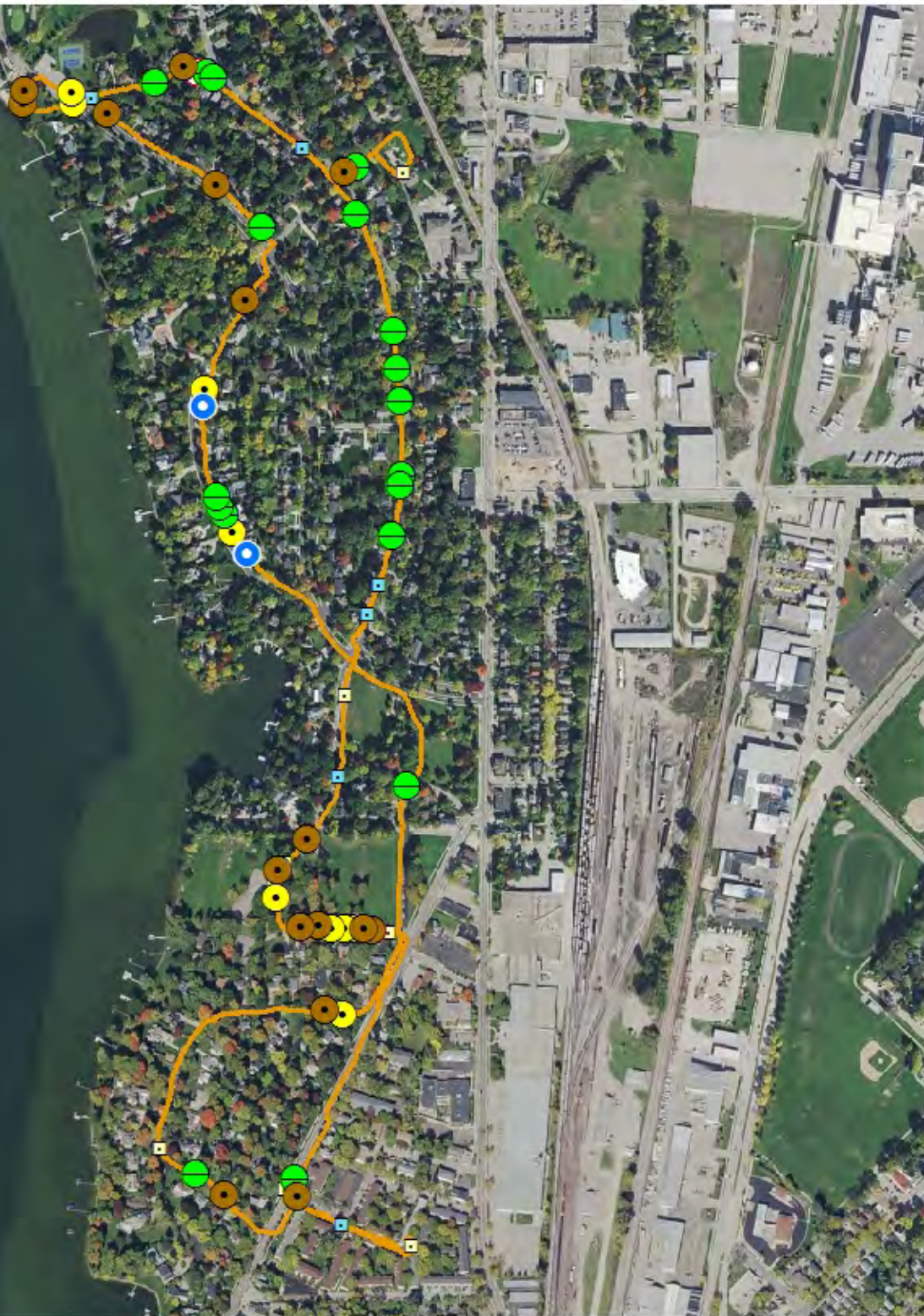


Acoustic Bat Encounters

Survey Route

SPECIES/GROUP

- High Frequency ≥ 35 kHz
- Little Brown/
Northern Long-eared
- Little Brown
- Northern Long-eared
- ⊗ Eastern Red/ Pipistrelle
- Eastern Red
- Eastern Pipistrelle
- Low Frequency ≤ 35 kHz
- Hoary
- Big Brown/ Silver-haired
- Big Brown
- Silver-haired



SURVEY RESULTS

Dane County
Maple Bluff
24 May 2016
RT 3603

Surveyors: S Schumacher
Route Length: 5.34 km
3 Species Encountered

Time & Weather

Time (PM)	
9:10	10:25
Temperature (F)	
71.0	69.0
Relative Humidity (%)	
70.0	73.0
Wind (m/s)	
4.0	0.0

Notes:

