

Acoustic Bat Encounters

Survey Route

SPECIES/GROUP

High Frequency ≥ 35 kHz

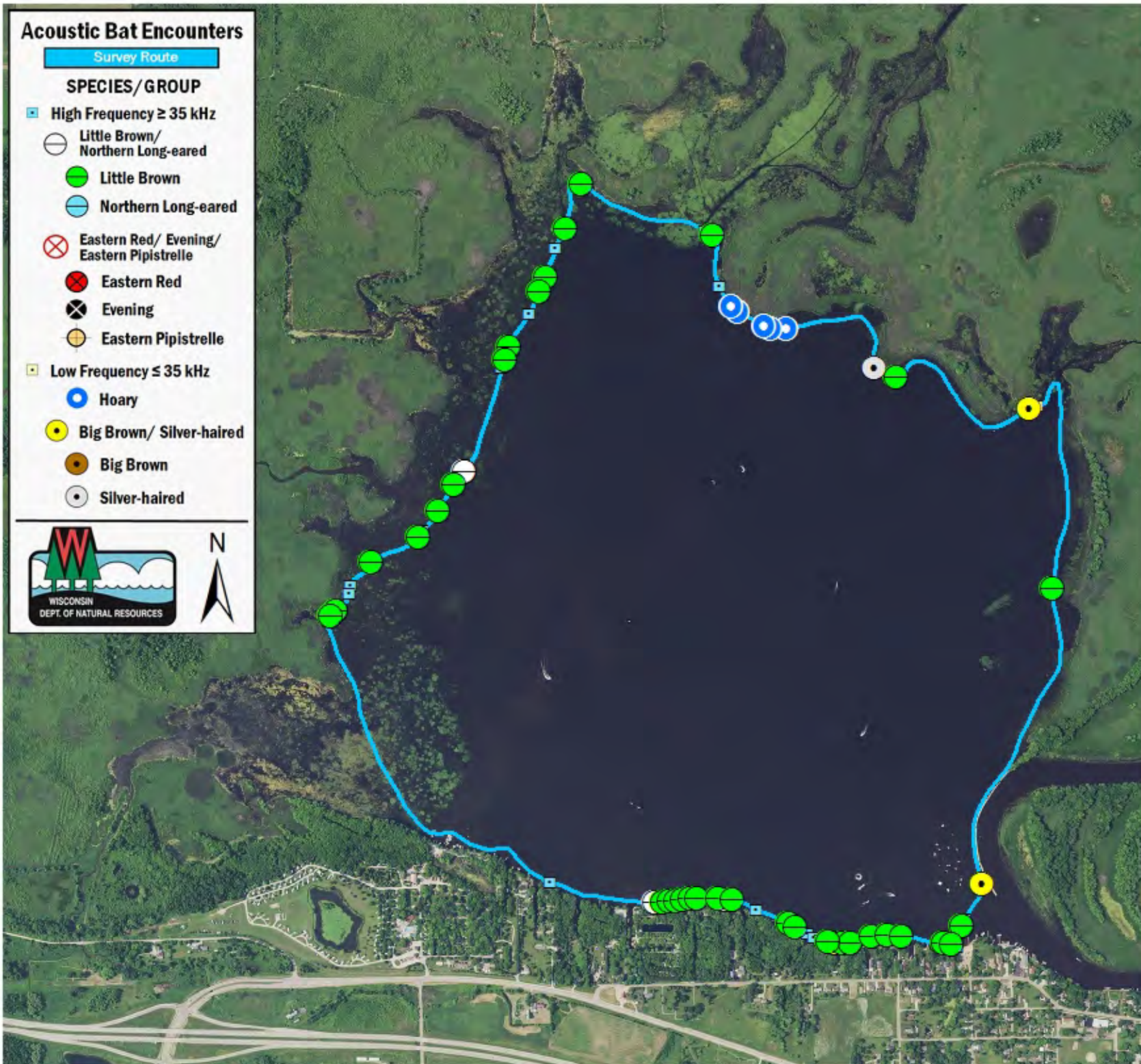
- Little Brown/
Northern Long-eared
- Little Brown
- Northern Long-eared

Eastern Red/ Evening/
Eastern Pipistrelle

- Eastern Red
- Evening
- Eastern Pipistrelle

Low Frequency ≤ 35 kHz

- Hoary
- Big Brown/ Silver-haired
- Big Brown
- Silver-haired



SURVEY RESULTS

Waupaca County
Partridge Lake
9 June 2016
RT 3636

Surveyors: A Badje
Route Length: 8.07 km
3 Species Encountered
48.97 Passes/Detector Hr

Time & Weather

Time (PM)	
9:14	10:41
Temperature (F)	
70.2	68.0
Relative Humidity (%)	
78.0	74.0
Wind (m/s)	
1.6	2.1

Notes: BATLAS Rt.
Survey completed counter-clockwise.

