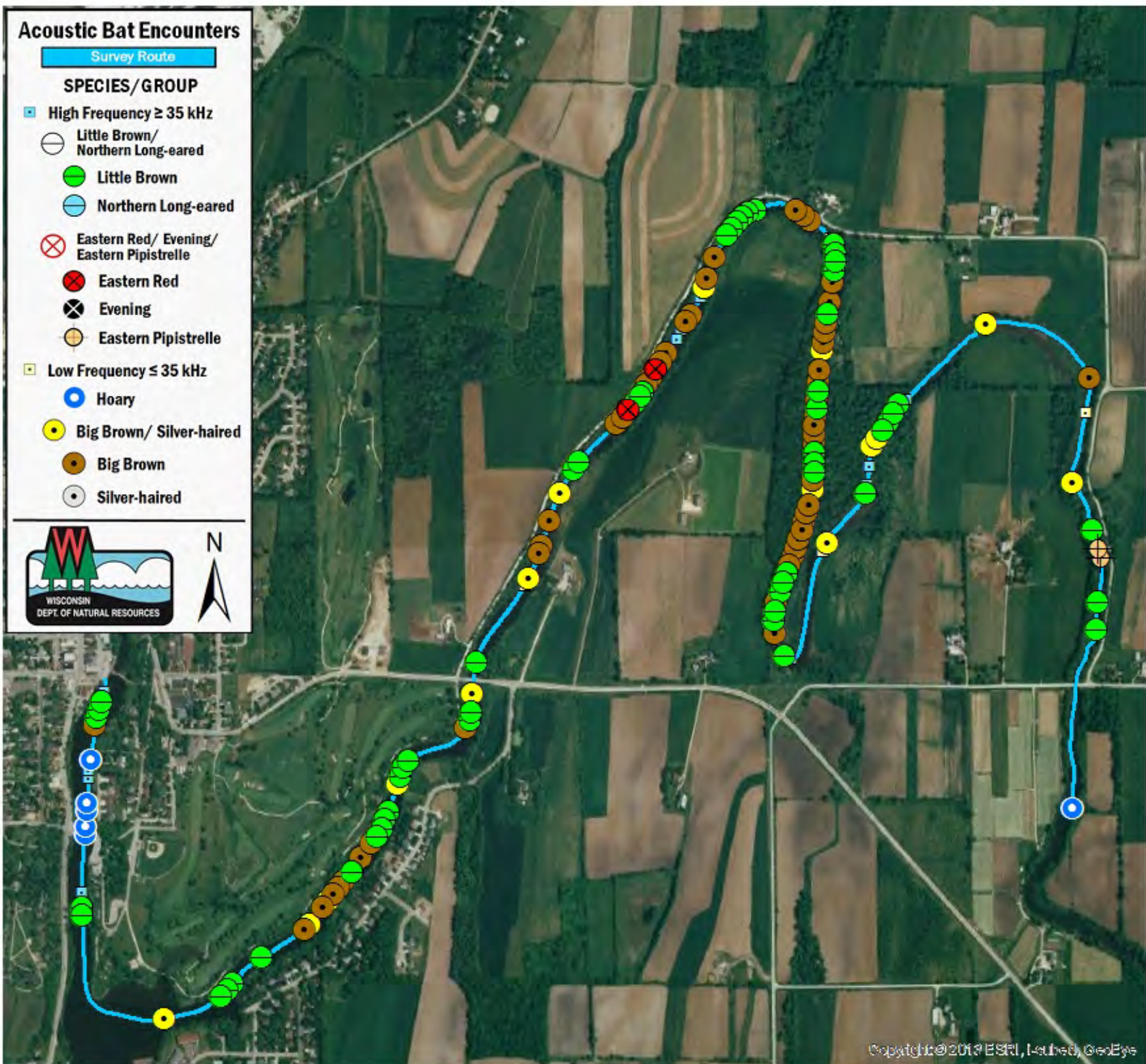


Acoustic Bat Encounters

Survey Route

SPECIES/GROUP

- High Frequency ≥ 35 kHz
 - Little Brown/
Northern Long-eared
 - Little Brown
 - Northern Long-eared
 - ⊗ Eastern Red/ Evening/
Eastern Pipistrelle
 - Eastern Red
 - ⊗ Evening
 - Eastern Pipistrelle
- Low Frequency ≤ 35 kHz
 - Hoary
 - Big Brown/ Silver-haired
 - Big Brown
 - Silver-haired



SURVEY RESULTS

Dodge County
East Branch Rock River 1
15 June 2016
RT 3655

Surveyors: A Badje
Route Length: 7.99 km
5 Species Encountered
147.14 Passes/Detector Hr

Time & Weather

Time (PM)	
9:12	10:36
Temperature (F)	
72.1	69.1
Relative Humidity (%)	
76.0	73.0
Wind (m/s)	
6.2	2.1

Notes: BATLAS Rt.
Survey completed E to W.

