



SURVEY RESULTS

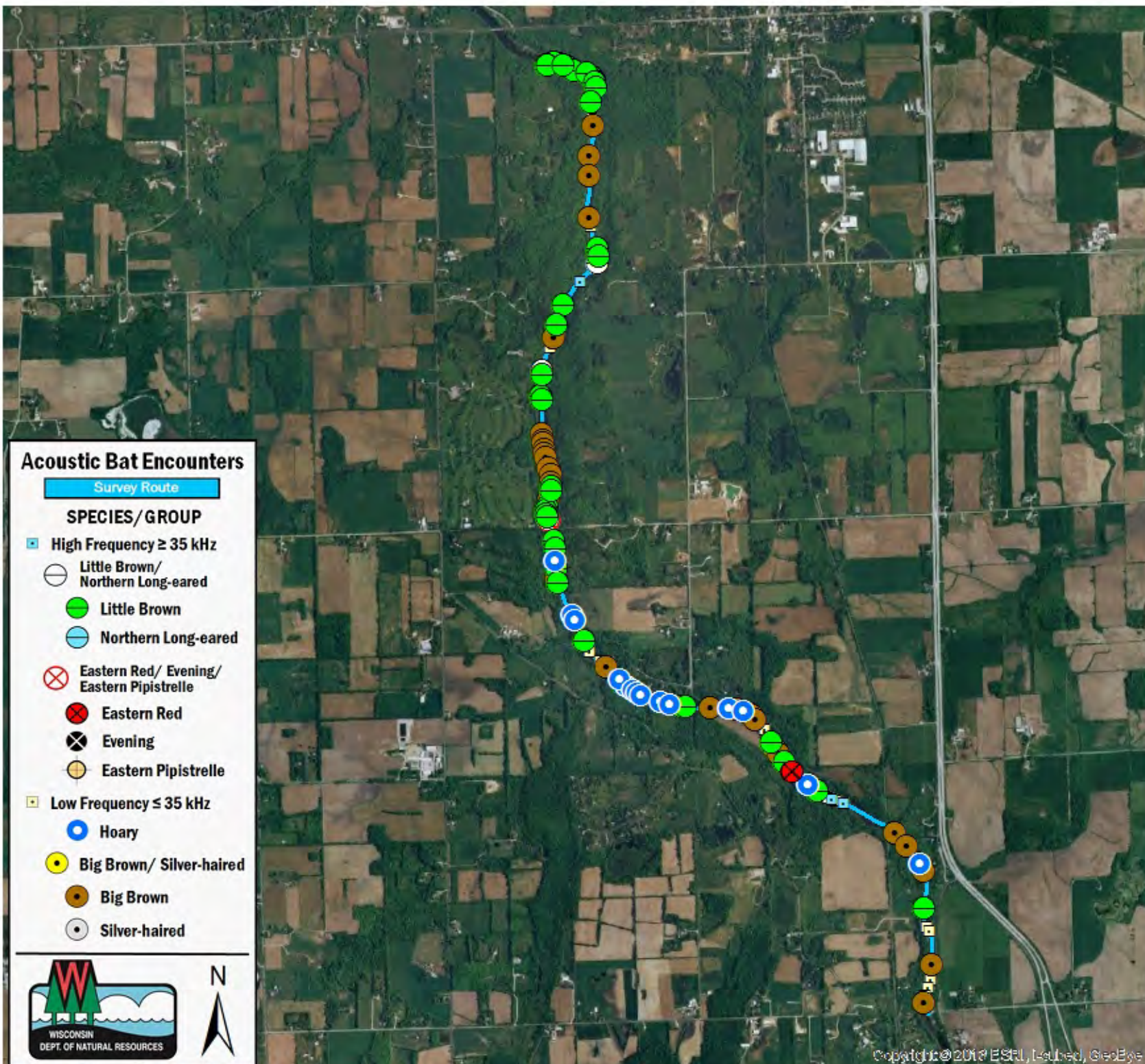
Ozaukee County
Milwaukee River 3
17 June 2016
RT 3660

Surveyors: A Badje
Route Length: 8.02 km
4 Species Encountered
145.6 Passes/Detector Hr

Time & Weather

Time (PM)	
9:10	10:25
Temperature (F)	
64.4	60.8
Relative Humidity (%)	
73.0	88.0
Wind (m/s)	
0.0	0.0

Notes: BATLAS Rt.
Survey completed N to S.



Acoustic Bat Encounters

Survey Route

SPECIES/GROUP

- ▣ High Frequency ≥ 35 kHz
 - Little Brown/Northern Long-eared
 - Little Brown
 - Northern Long-eared
 - ⊗ Eastern Red/ Evening/ Eastern Pipistrelle
 - ⊗ Eastern Red
 - ⊗ Evening
 - Eastern Pipistrelle
- ▣ Low Frequency ≤ 35 kHz
 - Hoary
 - Big Brown/ Silver-haired
 - Big Brown
 - Silver-haired

