

# Acoustic Bat Encounters

Survey Route

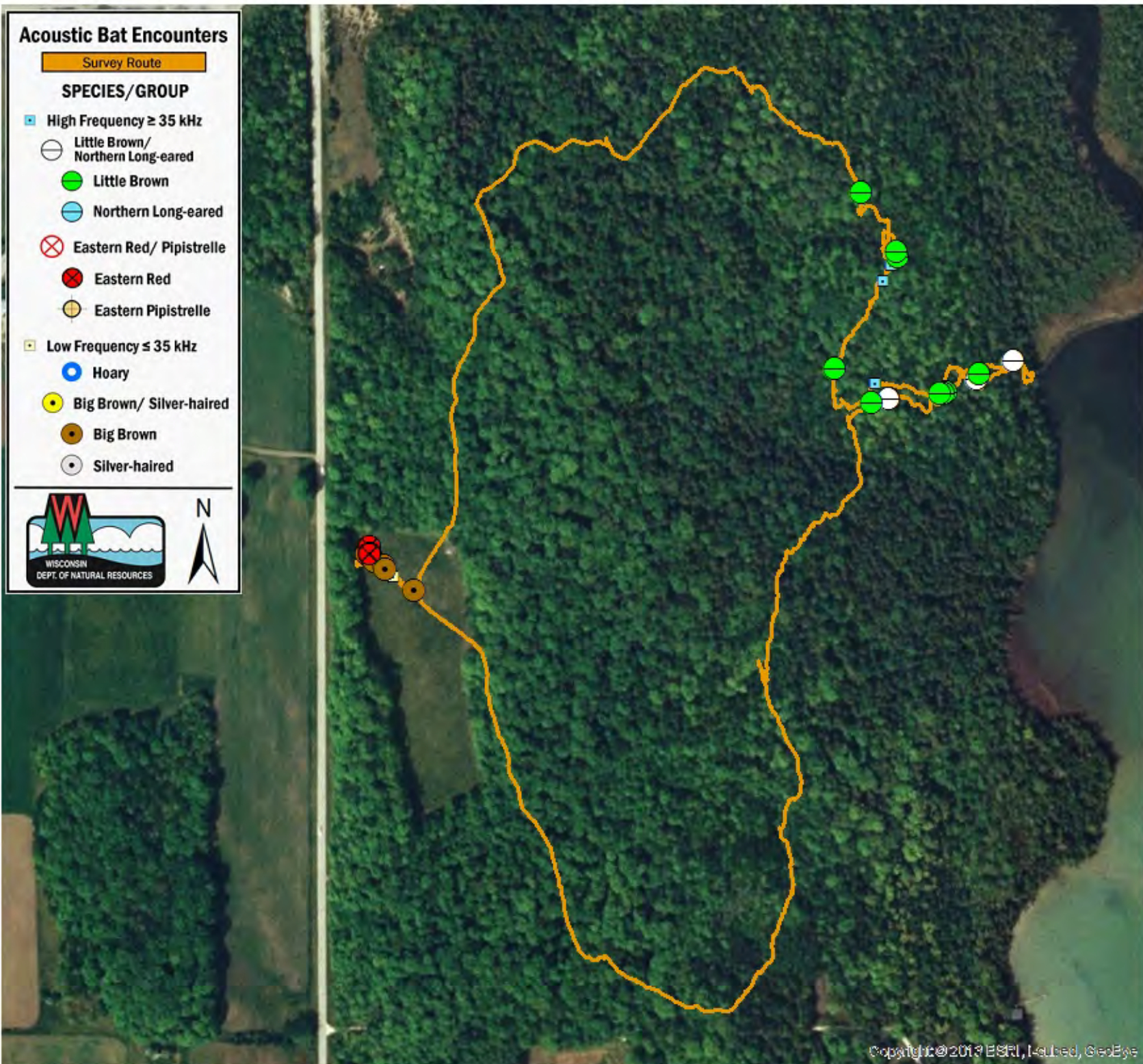
## SPECIES/GROUP

### High Frequency $\geq 35$ kHz

- Little Brown/  
Northern Long-eared
- Little Brown
- Northern Long-eared
- ⊗ Eastern Red/ Pipistrelle
- Eastern Red
- Eastern Pipistrelle

### Low Frequency $\leq 35$ kHz

- Hoary
- Big Brown/ Silver-haired
- Big Brown
- Silver-haired



## SURVEY RESULTS

Door County

Logan Creek

17 June 2016

RT 3665

Surveyors: S Schumacher

Route Length: 3.12 km

3 Species Encountered

### Time & Weather

Time (PM)

9:10      10:10

Temperature (F)

72.0      73.0

Relative Humidity (%)

62.0      62.0

Wind (m/s)

0.0      0.0

Notes:

