



## SURVEY RESULTS

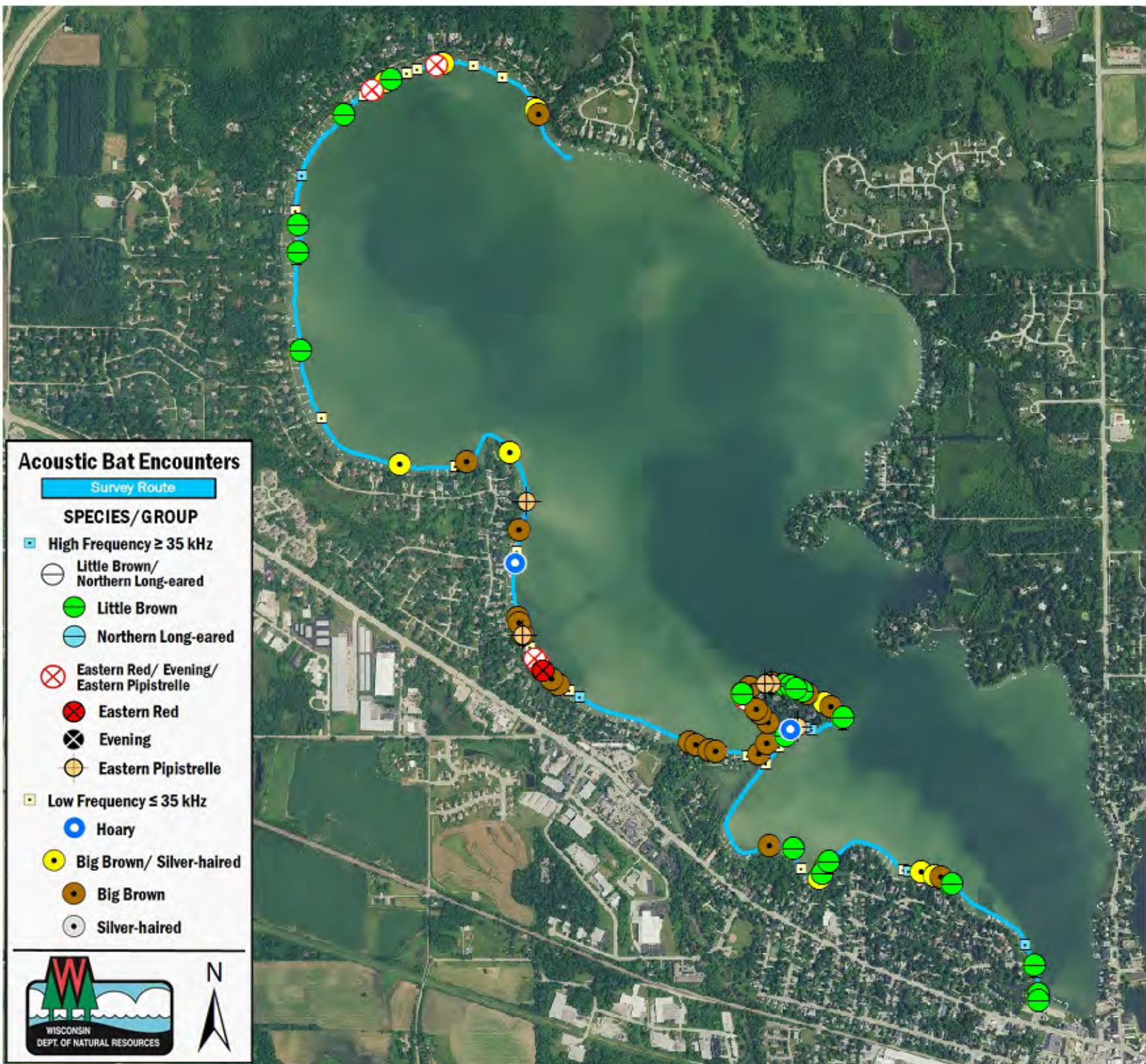
Waukesha County  
 Lac la Belle  
 20 June 2016  
 RT 3670

Surveyors: A Badje  
 Route Length: 7.76 km  
 5 Species Encountered  
 84.71 Passes/Detector Hr

### Time & Weather

Time (PM)	
9:12	10:37
Temperature (F)	
68.0	64.4
Relative Humidity (%)	
52.0	59.0
Wind (m/s)	
2.6	2.6

Notes: BATLAS Rt.  
 Survey completed N to S.



### Acoustic Bat Encounters

- Survey Route**
- SPECIES/GROUP**
- ▣ High Frequency  $\geq 35$  kHz
    - Little Brown/Northern Long-eared
    - Little Brown
    - Northern Long-eared
    - ⊗ Eastern Red/ Evening/ Eastern Pipistrelle
      - ⊗ Eastern Red
      - ⊗ Evening
      - ⊗ Eastern Pipistrelle
  - ▣ Low Frequency  $\leq 35$  kHz
    - Hoary
    - Big Brown/ Silver-haired
    - Big Brown
    - Silver-haired

