

Acoustic Bat Encounters

Survey Route

SPECIES/GROUP

High Frequency ≥ 35 kHz

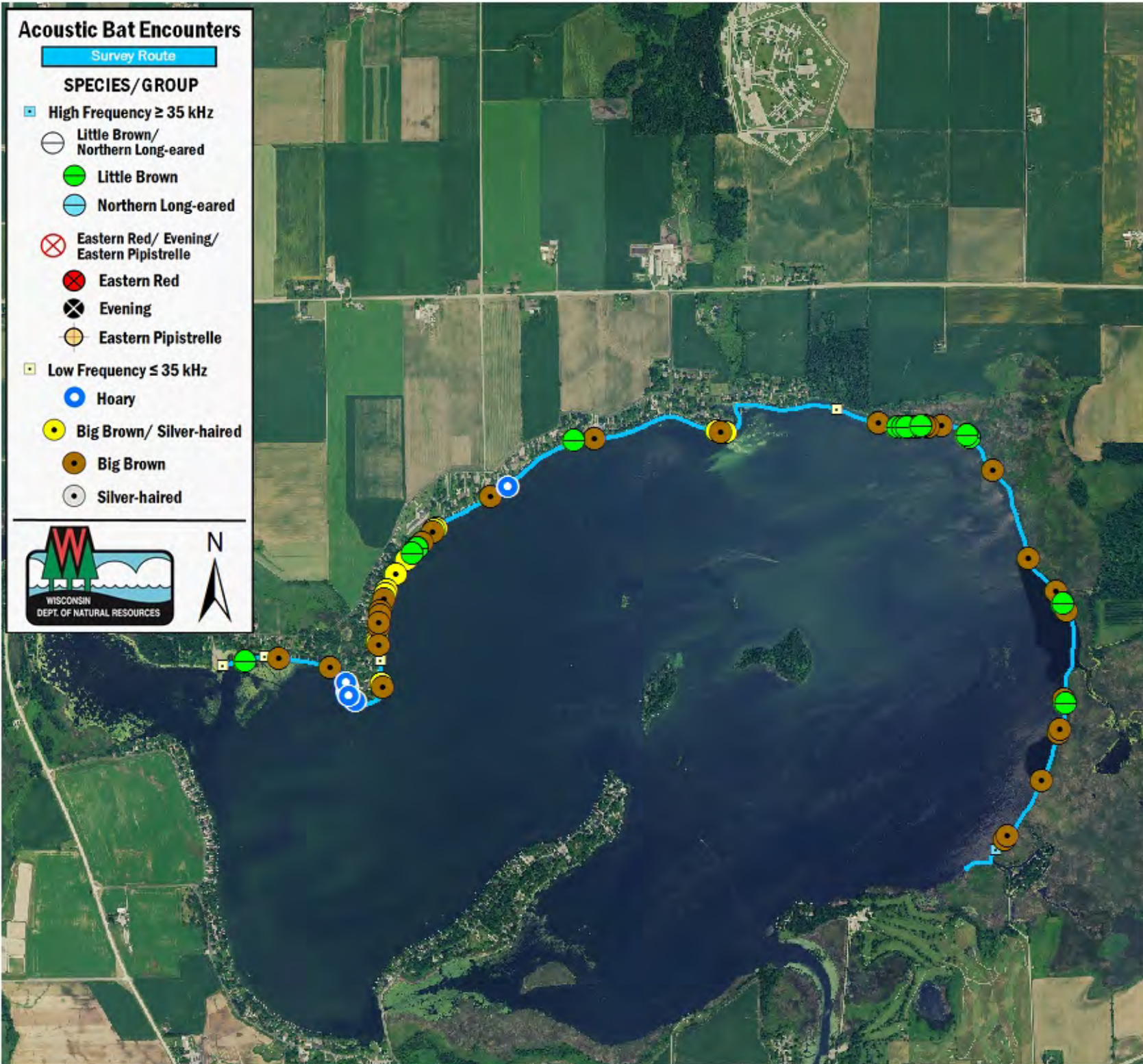
- Little Brown/
Northern Long-eared
- Little Brown
- Northern Long-eared

Eastern Red/ Evening/ Eastern Pipistrelle

- ⊗ Eastern Red
- ⊗ Evening
- Eastern Pipistrelle

Low Frequency ≤ 35 kHz

- Hoary
- Big Brown/ Silver-haired
- Big Brown
- Silver-haired



SURVEY RESULTS

Dodge County

Fox Lake

22 June 2016

RT 3682

Surveyors: A Badje

Route Length: 7.75 km

3 Species Encountered

65.58 Passes/Detector Hr

Time & Weather

Time (PM)

9:16 10:42

Temperature (F)

67.8 64.8

Relative Humidity (%)

77.0 79.0

Wind (m/s)

3.6 2.6

Notes: BATLAS Rt.

Survey completed
counter-clockwise.



0 0.3 0.6 0.9
km