

Acoustic Bat Encounters

Survey Route

SPECIES/GROUP

High Frequency ≥ 35 kHz

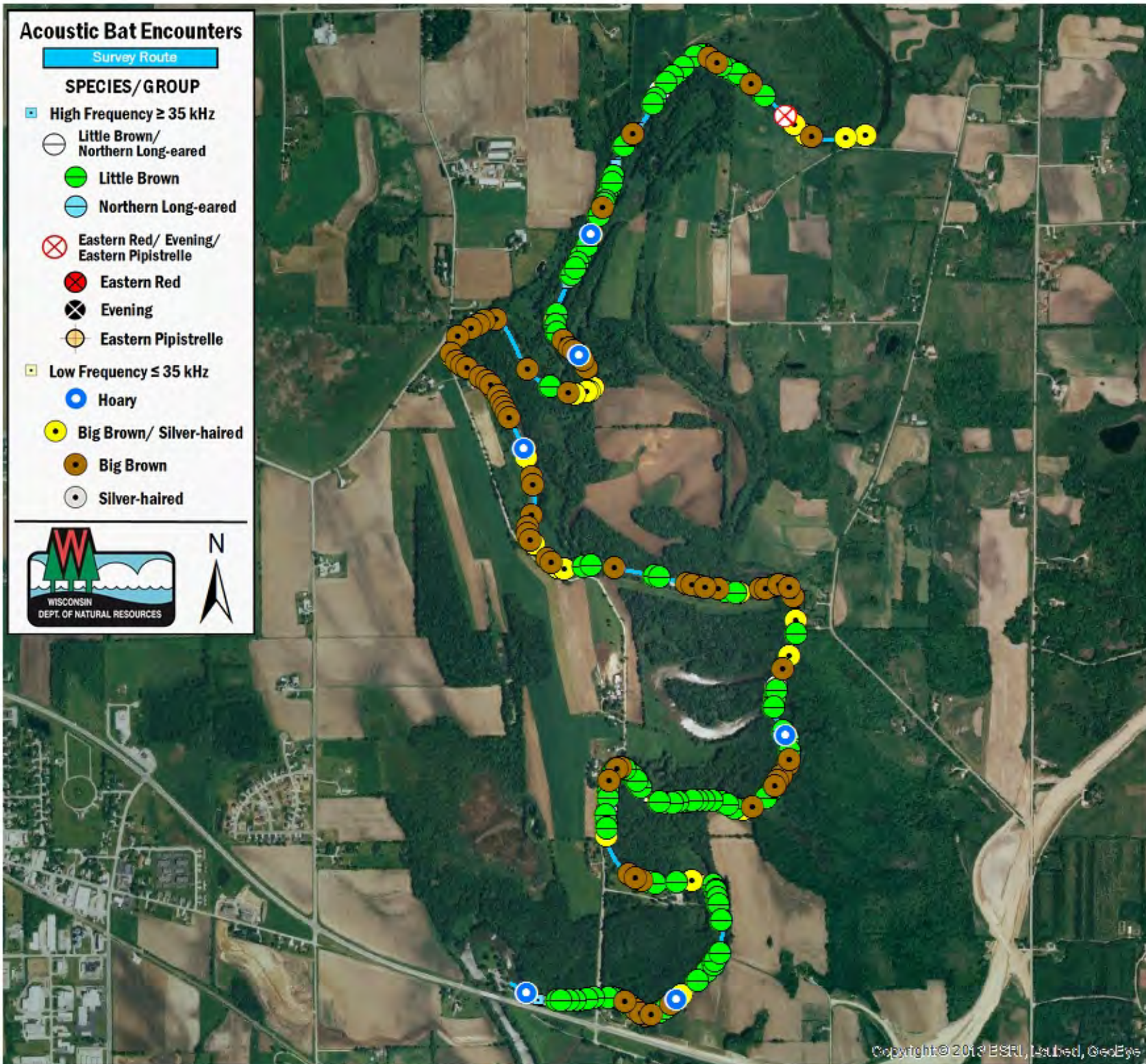
- Little Brown/
Northern Long-eared
- Little Brown
- Northern Long-eared

Eastern Red/ Evening/ Eastern Pipistrelle

- Eastern Red
- Evening
- Eastern Pipistrelle

Low Frequency ≤ 35 kHz

- Hoary
- Big Brown/ Silver-haired
- Big Brown
- Silver-haired



SURVEY RESULTS

Jefferson County

Rock River 3

20 June 2016

RT 3683

Surveyors: G Emerson

Route Length: 8.55 km

3 Species Encountered

187.27 Passes / Detector Hr

Time & Weather

Time (PM)

9:12 10:51

Temperature (F)

73.0 65.8

Relative Humidity (%)

52.0 67.0

Wind (m/s)

0.0 2.1

Notes: BATLAS Rt.
Survey completed N to S.

