

# Acoustic Bat Encounters

Survey Route

## SPECIES/GROUP

### High Frequency $\geq 35$ kHz

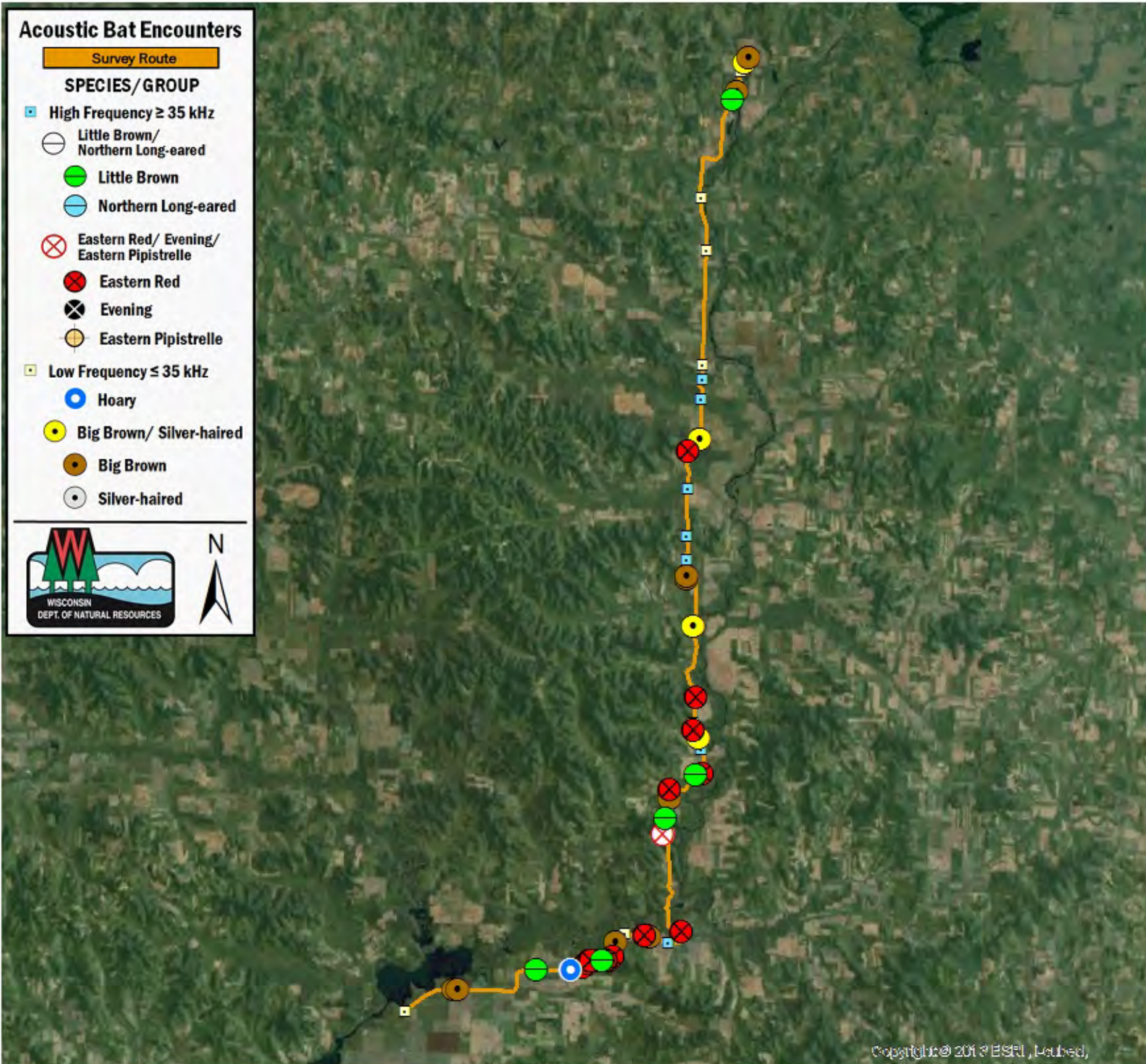
- Little Brown/  
Northern Long-eared
- Little Brown
- Northern Long-eared

### Eastern Red/ Evening/ Eastern Pipistrelle

- ⊗ Eastern Red
- ⊗ Evening
- Eastern Pipistrelle

### Low Frequency $\leq 35$ kHz

- Hoary
- Big Brown/ Silver-haired
- Big Brown
- Silver-haired



## SURVEY RESULTS

Barron/Dunn County

WCR 3 - Driving Rt

23 June 2016

RT 3705

Surveyors: T & L Ludwig

Route Length: 49.36 km

4 Species Encountered

### Time & Weather

Time (PM)

9:27      11:04

Temperature (F)

65.5      61.7

Relative Humidity (%)

70.0      95.0

Wind (m/s)

1.5      0.0

Notes: Survey completed S to N.

