

# Acoustic Bat Encounters

Survey Route

## SPECIES/GROUP

High Frequency  $\geq 35$  kHz

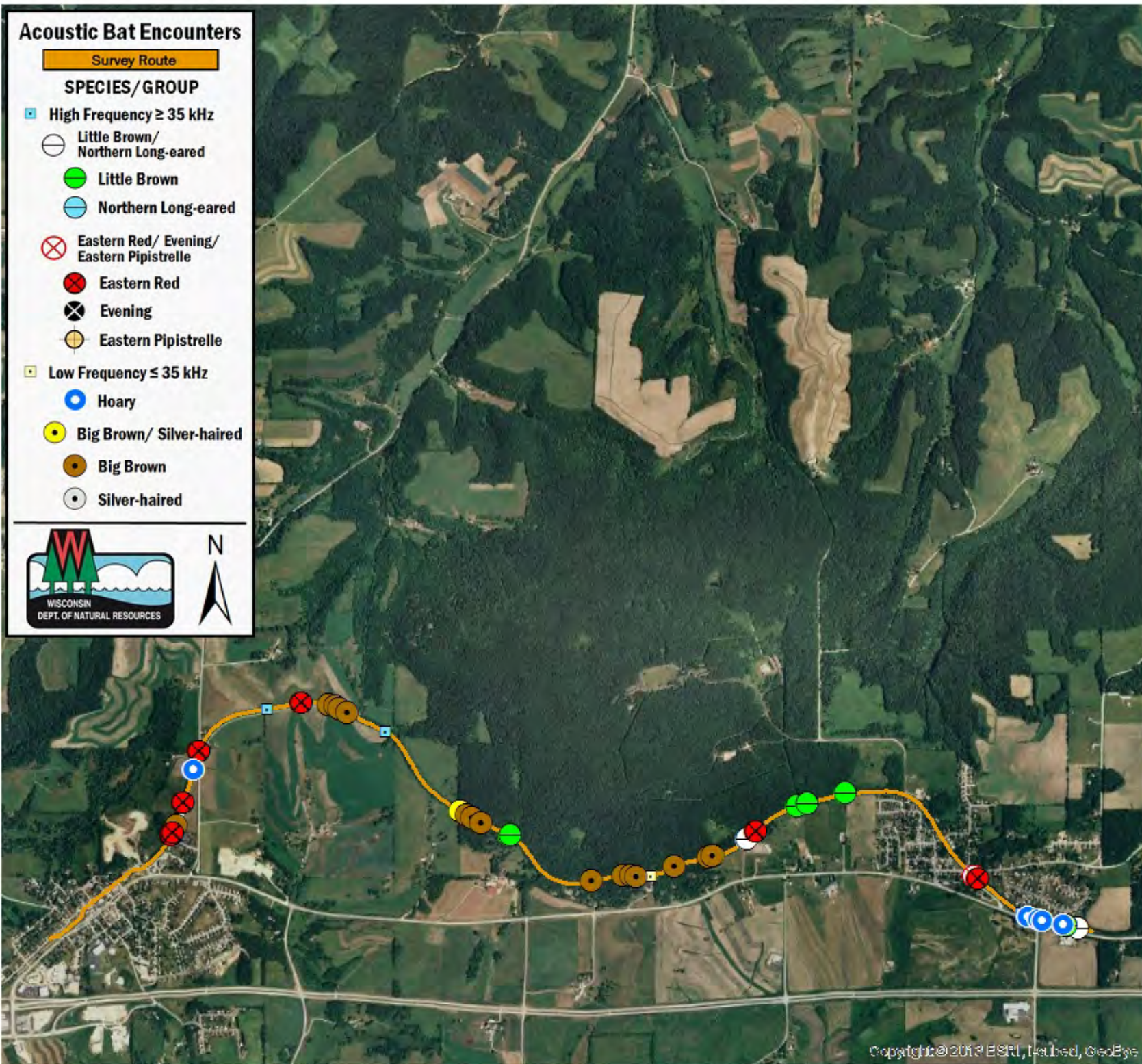
- Little Brown/  
Northern Long-eared
- Little Brown
- Northern Long-eared

Eastern Red/ Evening/  
Eastern Pipistrelle

- ⊗ Eastern Red
- ⊗ Evening
- Eastern Pipistrelle

Low Frequency  $\leq 35$  kHz

- Hoary
- Big Brown/ Silver-haired
- Big Brown
- Silver-haired



## SURVEY RESULTS

Dane/Iowa County  
Military Ridge Trail 2  
23 June 2016  
RT 3712

Surveyors: J Durbin  
& D Goetzinger  
Route Length: 8.22 km  
4 Species Encountered

### Time & Weather

Time (PM)	
9:13	10:40
Temperature (F)	
69.0	65.0
Relative Humidity (%)	
64.0	77.0
Wind (m/s)	
0.0	0.0

Notes: BATLAS Rt.  
Survey completed W to E.

