

# Acoustic Bat Encounters

Survey Route

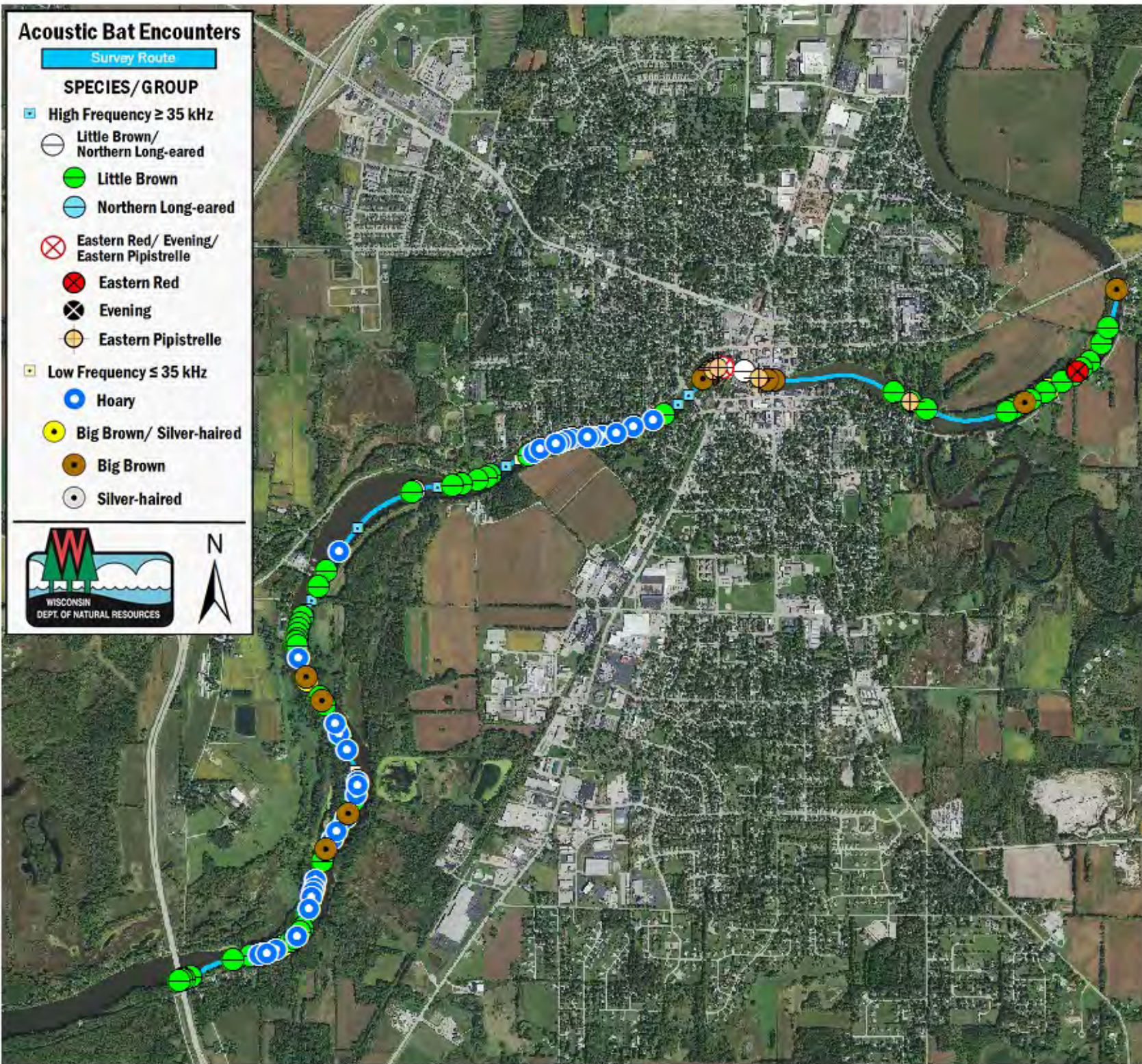
## SPECIES/GROUP

### High Frequency $\geq 35$ kHz

- Little Brown/  
Northern Long-eared
- Little Brown
- Northern Long-eared
- Eastern Red/ Evening/  
Eastern Pipistrelle
- Eastern Red
- Evening
- Eastern Pipistrelle

### Low Frequency $\leq 35$ kHz

- Hoary
- Big Brown/ Silver-haired
- Big Brown
- Silver-haired



## SURVEY RESULTS

Jefferson County

Rock River 6

27 June 2016

RT 3713

Surveyors: G Emerson

Route Length: 8.04 km

5 Species Encountered

130.47 Passes/ Detector Hr

### Time & Weather

Time (PM)

9:13      10:39

Temperature (F)

69.1      67.1

Relative Humidity (%)

64.0      70.0

Wind (m/s)

3.1      2.1

Notes: BATLAS Rt.  
Survey completed E to W.

