

Acoustic Bat Encounters

Survey Route

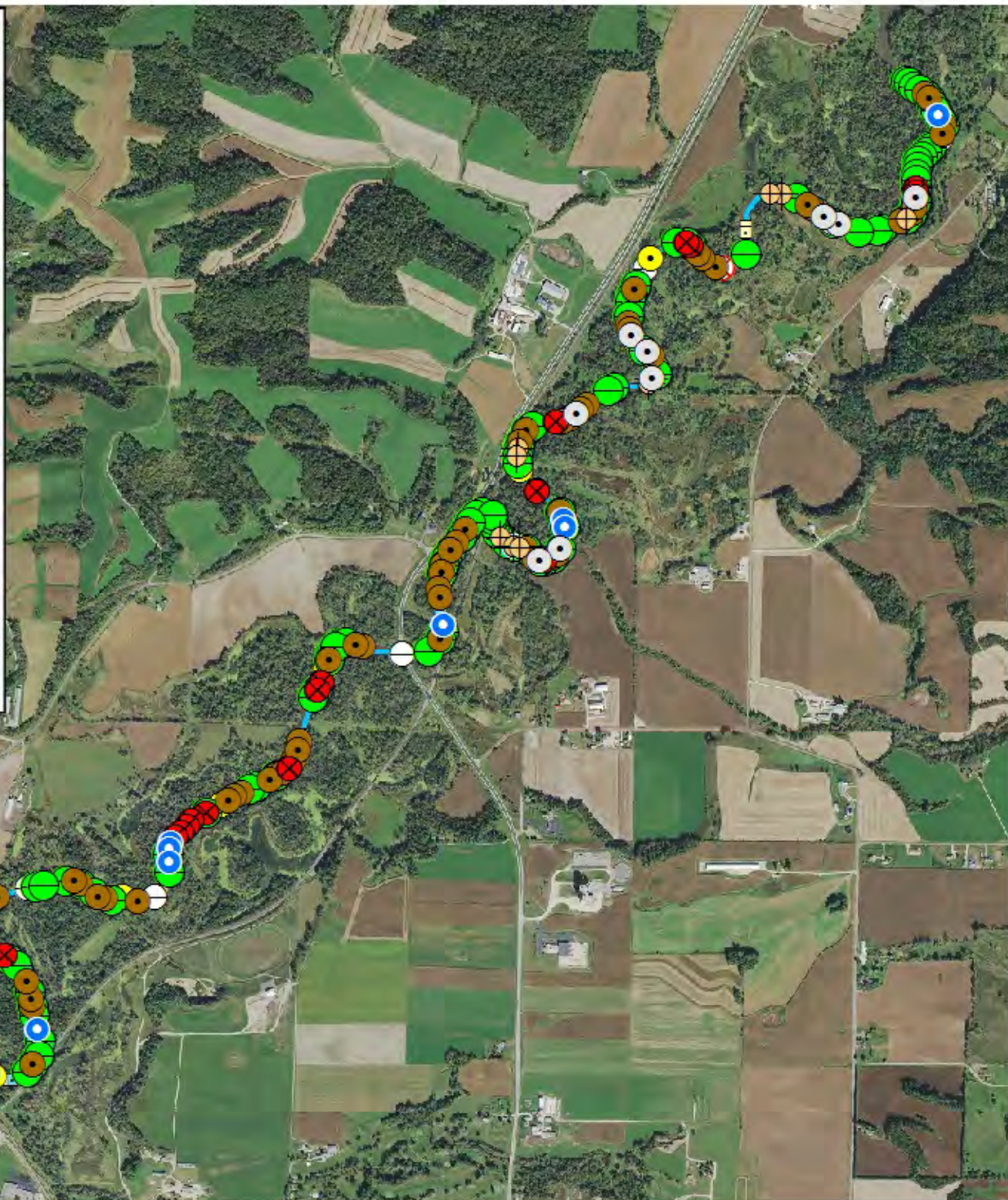
SPECIES / GROUP

High Frequency ≥ 35 kHz

- Little Brown/
Northern Long-eared
- Little Brown
- Northern Long-eared
- ⊗ Eastern Red/ Evening/
Eastern Pipistrelle
- Eastern Red
- ⊗ Evening
- Eastern Pipistrelle

Low Frequency ≤ 35 kHz

- Hoary
- Big Brown/ Silver-haired
- Big Brown
- Silver-haired



SURVEY RESULTS

Trempealeau County

Trempealeau River 2

12 July 2016

RT 3750

Surveyors: A Badje

Route Length: 8.39 km

6 Species Encountered

257.56 Passes / Detector Hr

Time & Weather

Time (PM)

9:24 10:46

Temperature (F)

74.5 73.4

Relative Humidity (%)

67.0 69.0

Wind (m/s)

2.1 2.6

Notes: BATLAS Rt.
Survey completed NE to SW.

