



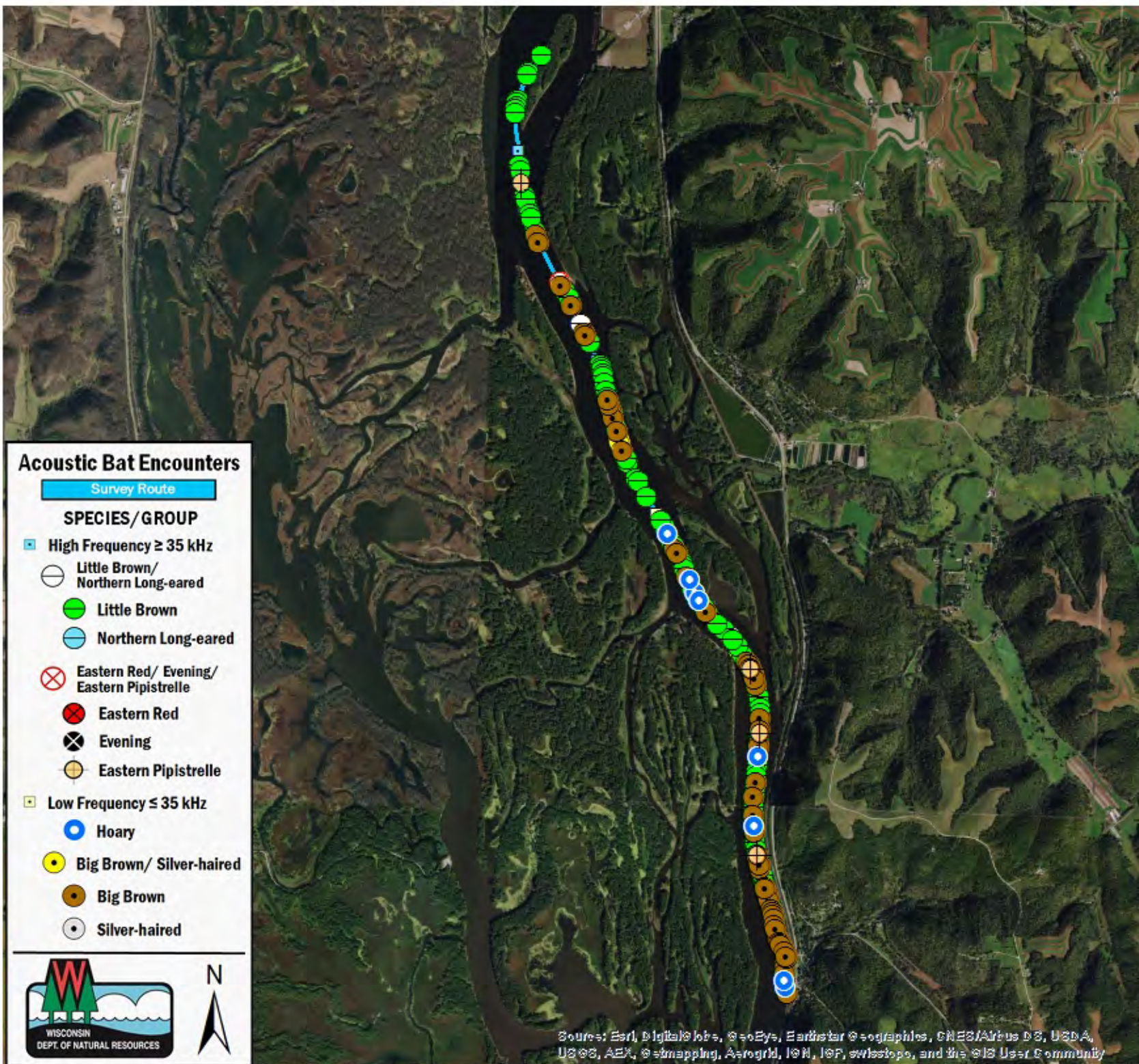
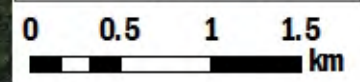
SURVEY RESULTS

Vernon County
 Mississippi River 4
 14 July 2016
 RT 3756

Surveyors: A Badje
 Route Length: 8.26 km
 4 Species Encountered
 322.89 Passes/Detector Hr

Time & Weather

Time (PM)	
9:18	10:34
Temperature (F)	
64.8	61.9
Relative Humidity (%)	
75.0	85.0
Wind (m/s)	
3.6	3.6
Notes: BATLAS Rt. Survey completed N to S.	



Acoustic Bat Encounters

- Survey Route**
- SPECIES/GROUP**
- ▣ High Frequency ≥ 35 kHz
 - Little Brown/Northern Long-eared
 - Little Brown
 - Northern Long-eared
 - ⊗ Eastern Red/ Evening/ Eastern Pipistrelle
 - ⊗ Eastern Red
 - ⊗ Evening
 - ⊗ Eastern Pipistrelle
 - ▣ Low Frequency ≤ 35 kHz
 - Hoary
 - Big Brown/ Silver-haired
 - Big Brown
 - Silver-haired



Source: Esri, DigitalGlobe, GeoEye, Earthstar Geographics, CNES/Airbus DS, USDA, USGS, AeroGRID, IGN, IGP, swisstopo, and the GIS User Community