

# Acoustic Bat Encounters

Survey Route

## SPECIES/GROUP

### High Frequency $\geq 35$ kHz

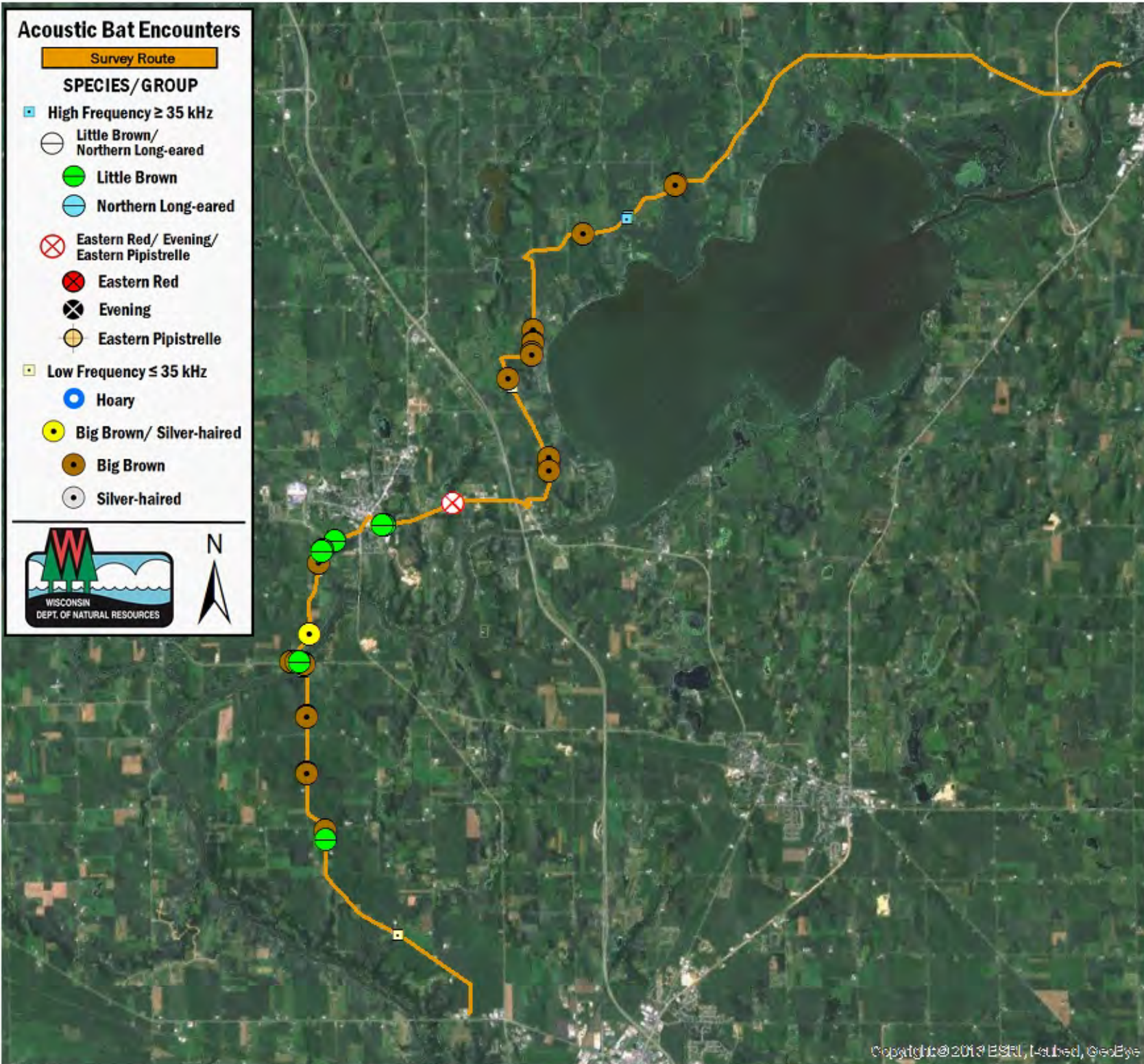
- Little Brown/  
Northern Long-eared
- Little Brown
- Northern Long-eared

### Eastern Red/ Evening/ Eastern Pipistrelle

- Eastern Red
- Evening
- Eastern Pipistrelle

### Low Frequency $\leq 35$ kHz

- Hoary
- Big Brown/ Silver-haired
- Big Brown
- Silver-haired



## SURVEY RESULTS

Dane/Jefferson/Rock County

SGP 1 - Driving Rt

14 July 2016

RT 3758

Surveyors: J Jorgensen

Route Length: 41.43 km

2 Species Encountered

### Time & Weather

Time (PM)

8:32      9:39

Temperature (F)

75.0      69.0

Relative Humidity (%)

64.0      60.0

Wind (m/s)

3.1      2.2

Notes: Survey completed NE to SW.

