

# Acoustic Bat Encounters

Survey Route

## SPECIES/GROUP

High Frequency  $\geq 35$  kHz

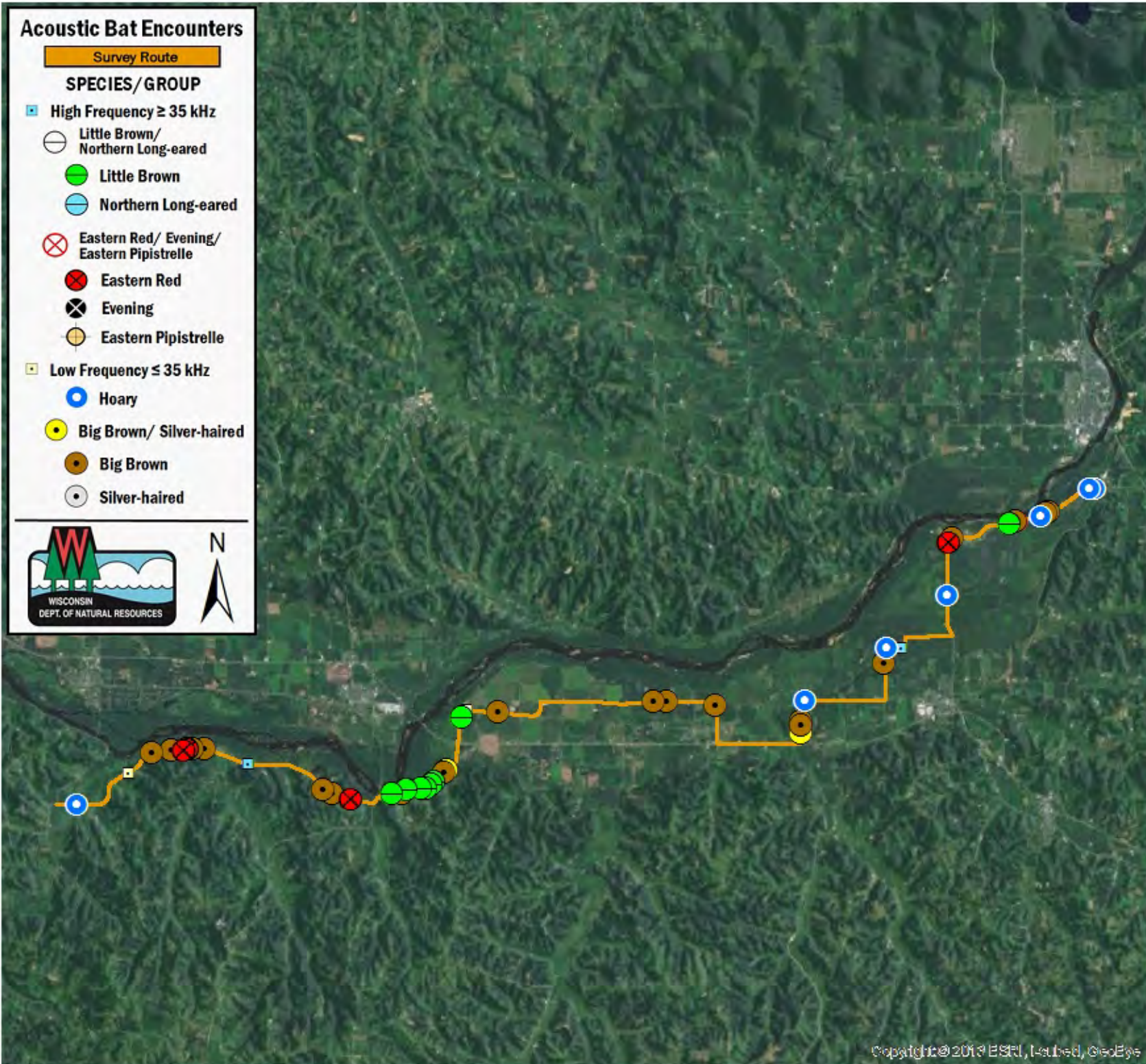
- Little Brown/  
Northern Long-eared
- Little Brown
- Northern Long-eared

Eastern Red/ Evening/  
Eastern Pipistrelle

- ⊗ Eastern Red
- ⊗ Evening
- Eastern Pipistrelle

Low Frequency  $\leq 35$  kHz

- Hoary
- Big Brown/ Silver-haired
- Big Brown
- Silver-haired



## SURVEY RESULTS

Dane/Iowa County  
WCR 1 - Driving Rt  
19 June 2016  
RT 3764

Surveyors: M Pfeiffer  
Route Length: 54.19 km  
4 Species Encountered

### Time & Weather

Time (PM)	
9:13	10:59
Temperature (F)	
78.0	73.0
Relative Humidity (%)	
59.0	74.0
Wind (m/s)	
2.2	6.7

Notes: Survey completed E to W.

